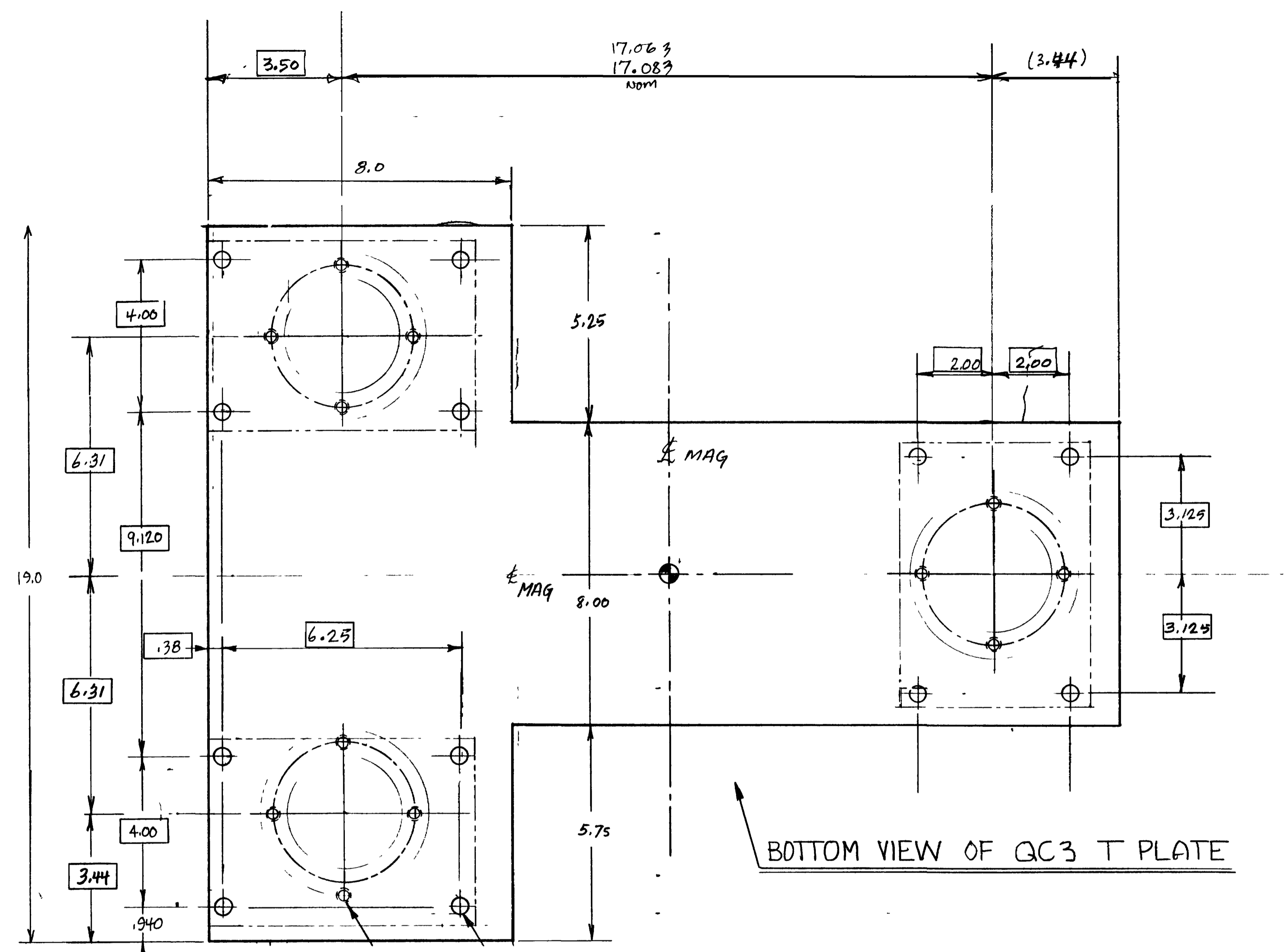


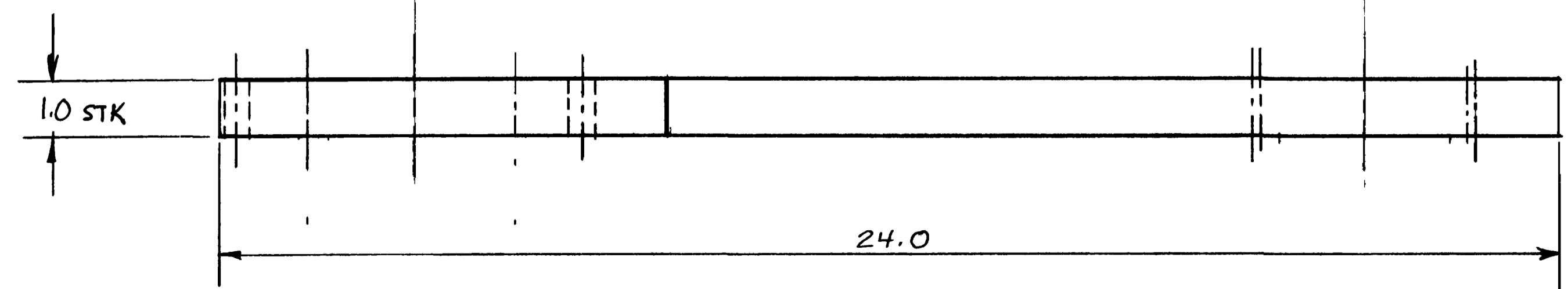
| REV | DESCRIPTION | DRN | CHK | APP | DATE |
|-----|-------------|-----|-----|-----|------|
| | | | | | |



BOTTOM VIEW OF QC3 T PLATE

12 X
Ø .44 THRU

3 X
4 X 3/8-16 THRU
ON 3.75 Ø BC.
⊕ Ø .028 A B C



MATERIAL-AL 6061-T6 PLT.

| ITEM NO | PREF | BASE STOCK OR PART NO | SUFF | TITLE OR DESCRIPTION | | QTY |
|--|------|-----------------------|------|---------------------------------|--|-----------------------------------|
| | | | | | | |
| UNLESS OTHERWISE SPECIFIED DIMENSIONS ARE IN INCHES. TOLERANCES: BREAK EDGES .005-.015 INTERNAL CORNERS .015 R MAX FRACTIONS ± DEC .X ± .03 JXX ± .015 JXXX ± .005 ANGLES ± 1/2° ALL SURFS | | | | SCALE: 1:2 DO NOT SCALE DRAWING | | NEXT ASSEMBLY: ID-234-321-90 |
| STANFORD LINEAR ACCELERATOR CENTER U.S. DEPARTMENT OF ENERGY STANFORD UNIVERSITY STANFORD, CALIFORNIA | | | | FFTB MECH | | QC-3 MAG MOVER QC-3 'T'-PLATE DET |
| PROPRIETARY DATA OF STANFORD UNIVERSITY AND/OR U.S. DEPARTMENT OF ENERGY. RECIPIENT SHALL NOT PUBLISH THE INFORMATION WITHIN UNLESS GRANTED SPECIFIC PERMISSION OF STANFORD UNIVERSITY. | | | | APPROVALS: <i>[Signature]</i> | | PF-234-321-91.RO |
| ENGR: <i>[Signature]</i> DATE: <i>[Signature]</i> | | | | DRAWN: Ed Askerland 8-18-92 | | |
| CHKD: <i>[Signature]</i> 92-67 | | | | | | |