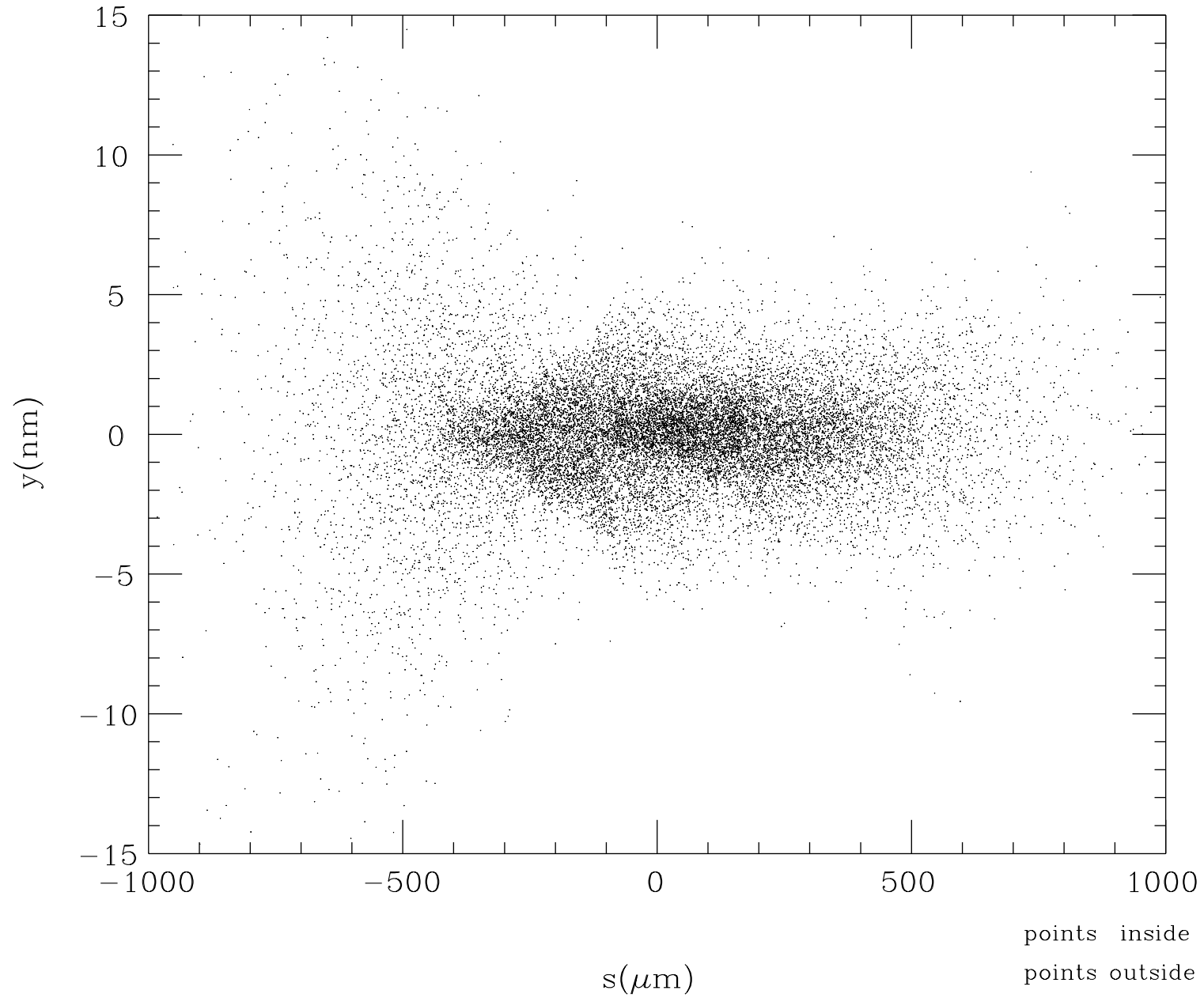
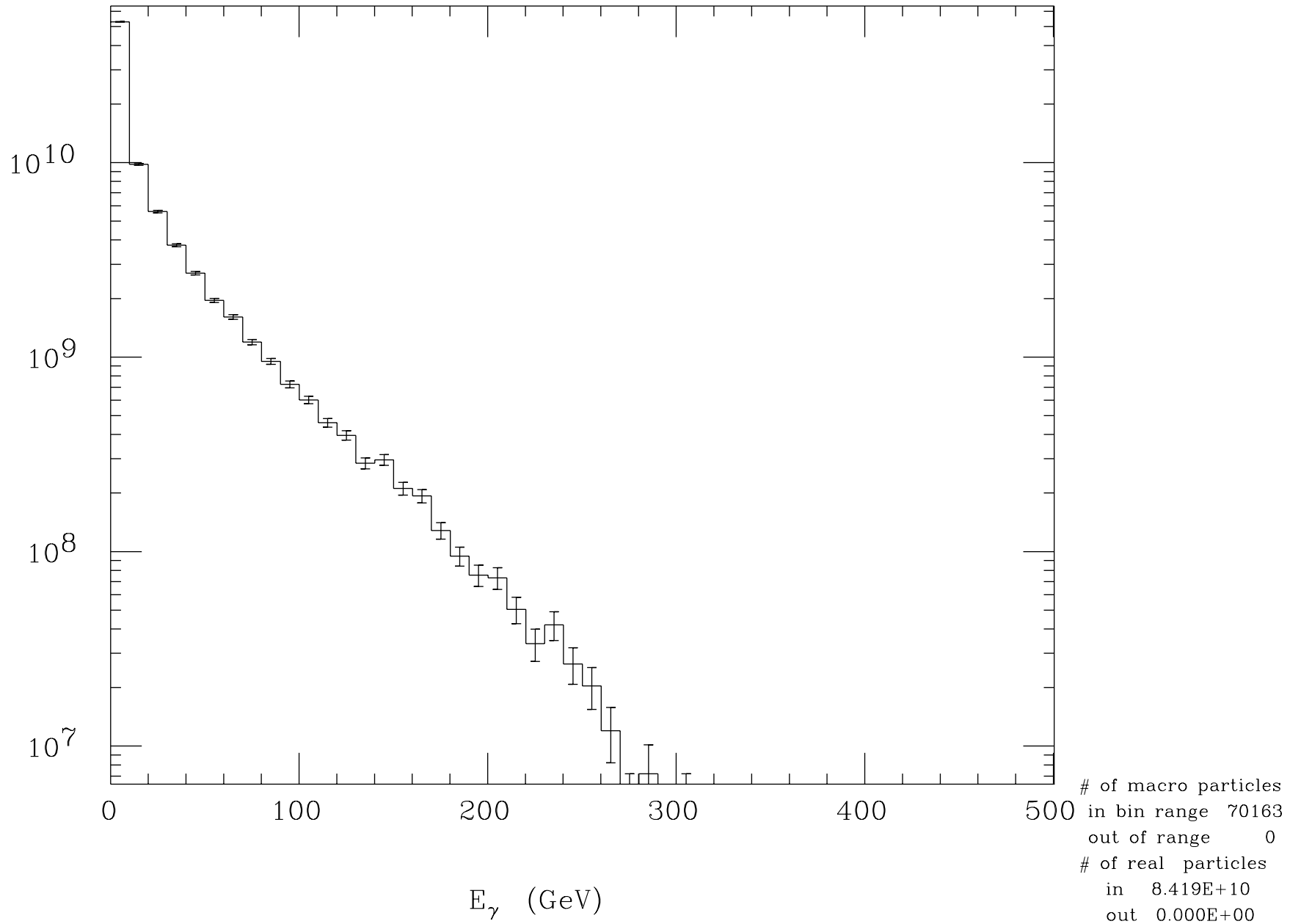


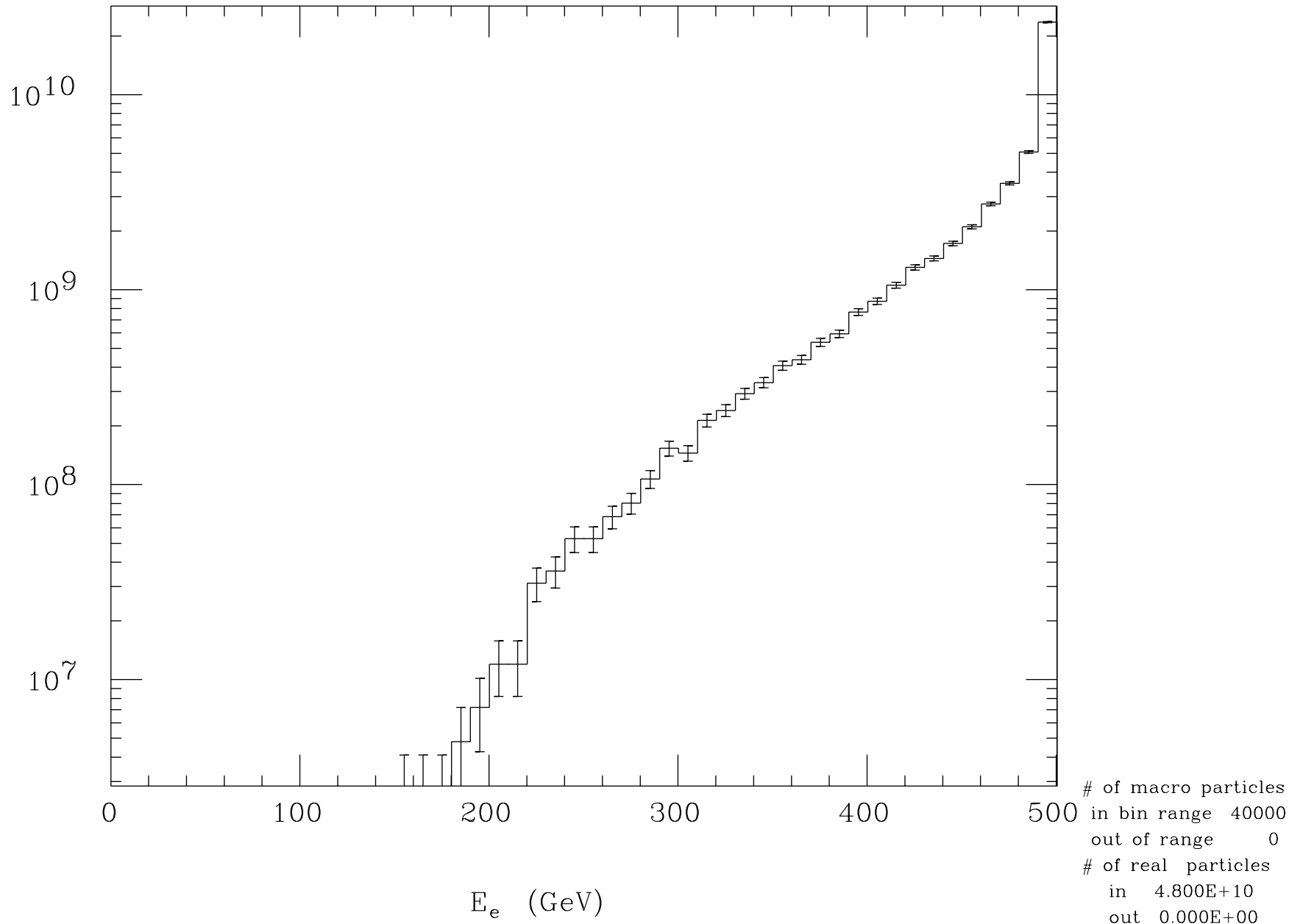
Electron Profile at t=0



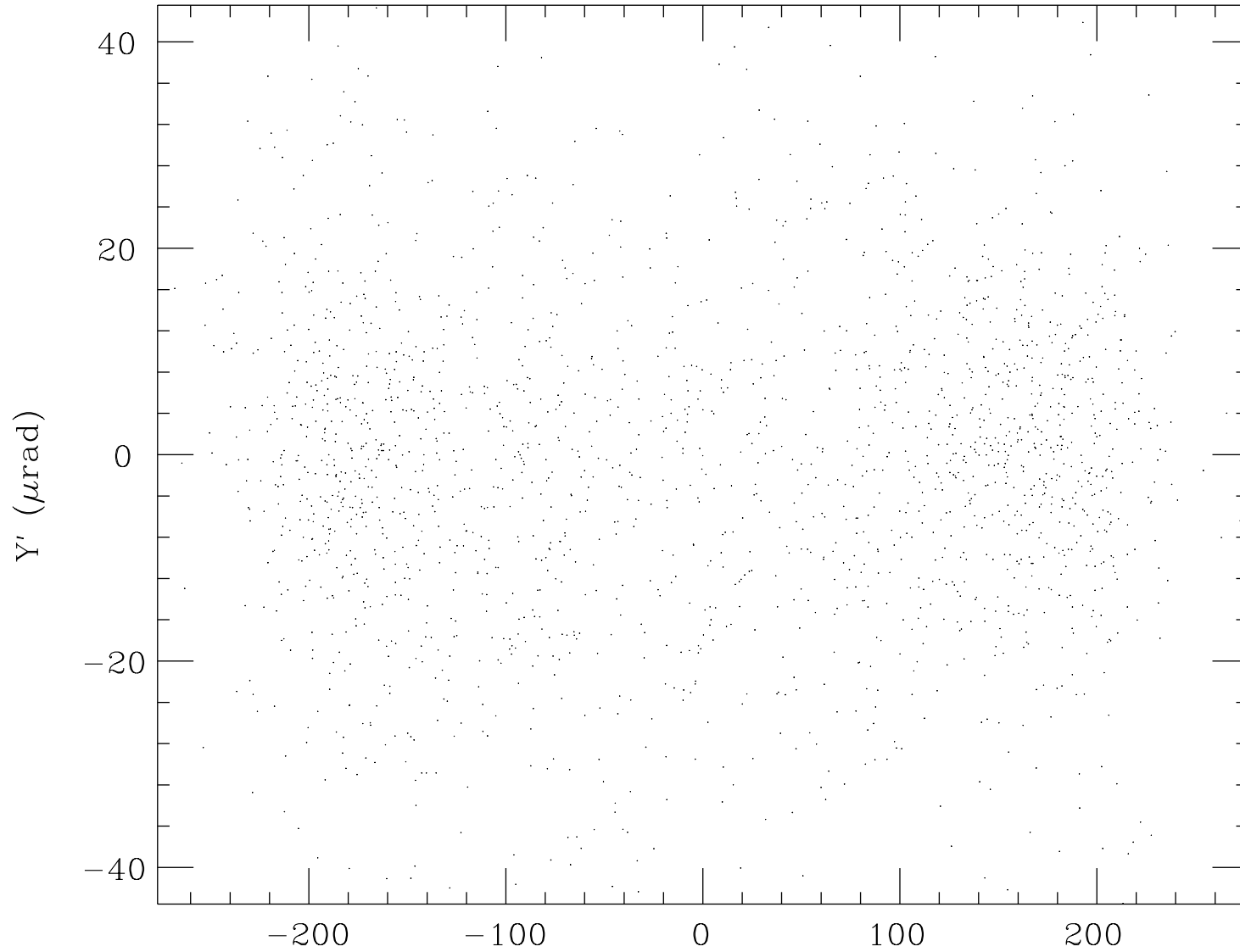
Beamstrahlung Energy Spectrum



Final Electron Energy Spectrum



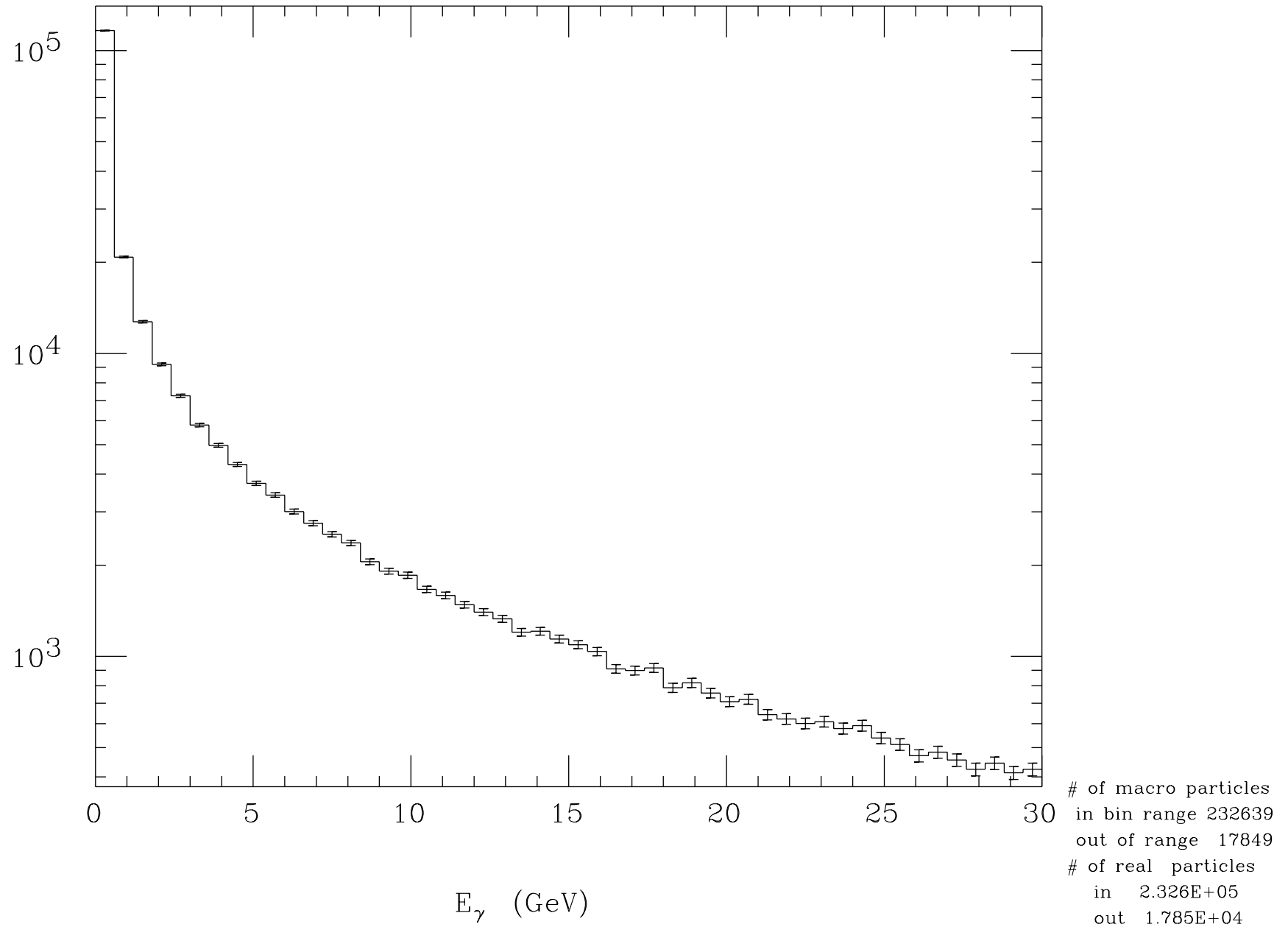
Final Electron Angle Distribution



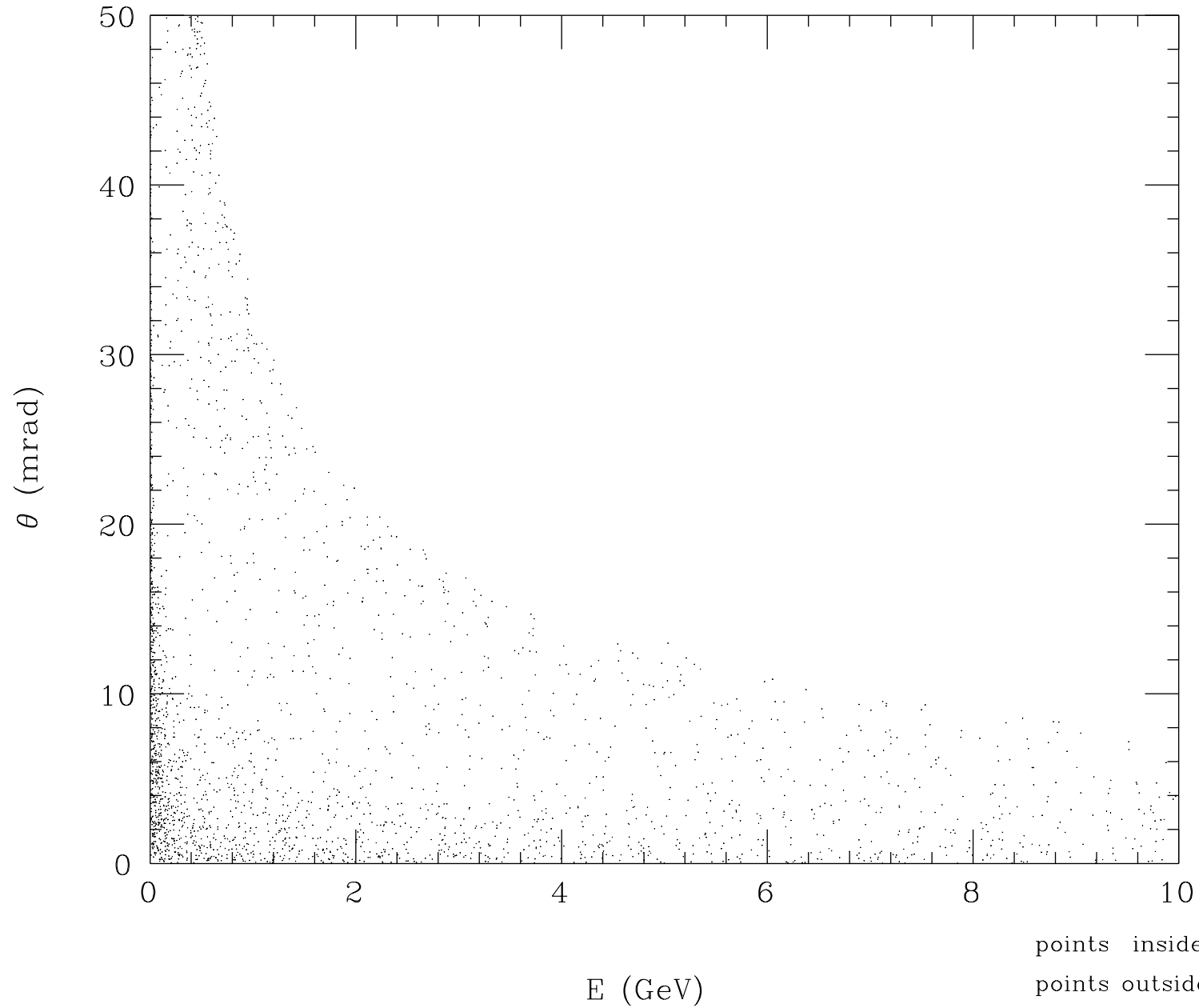
points inside	1970
points outside	45

X' (μrad)

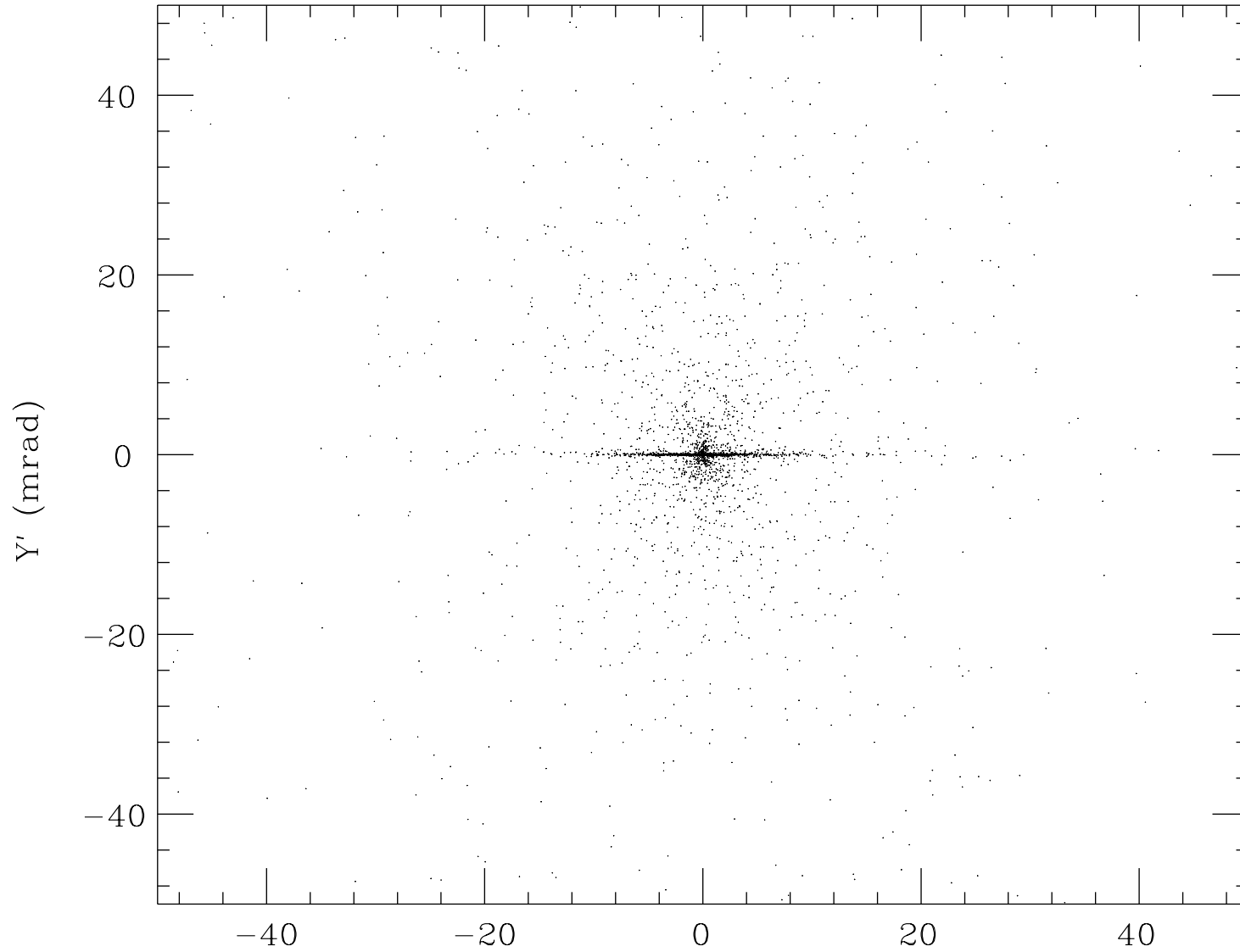
Incoherent Pair Energy Spectrum



Incoherent Pair Energy-Angle Distribution

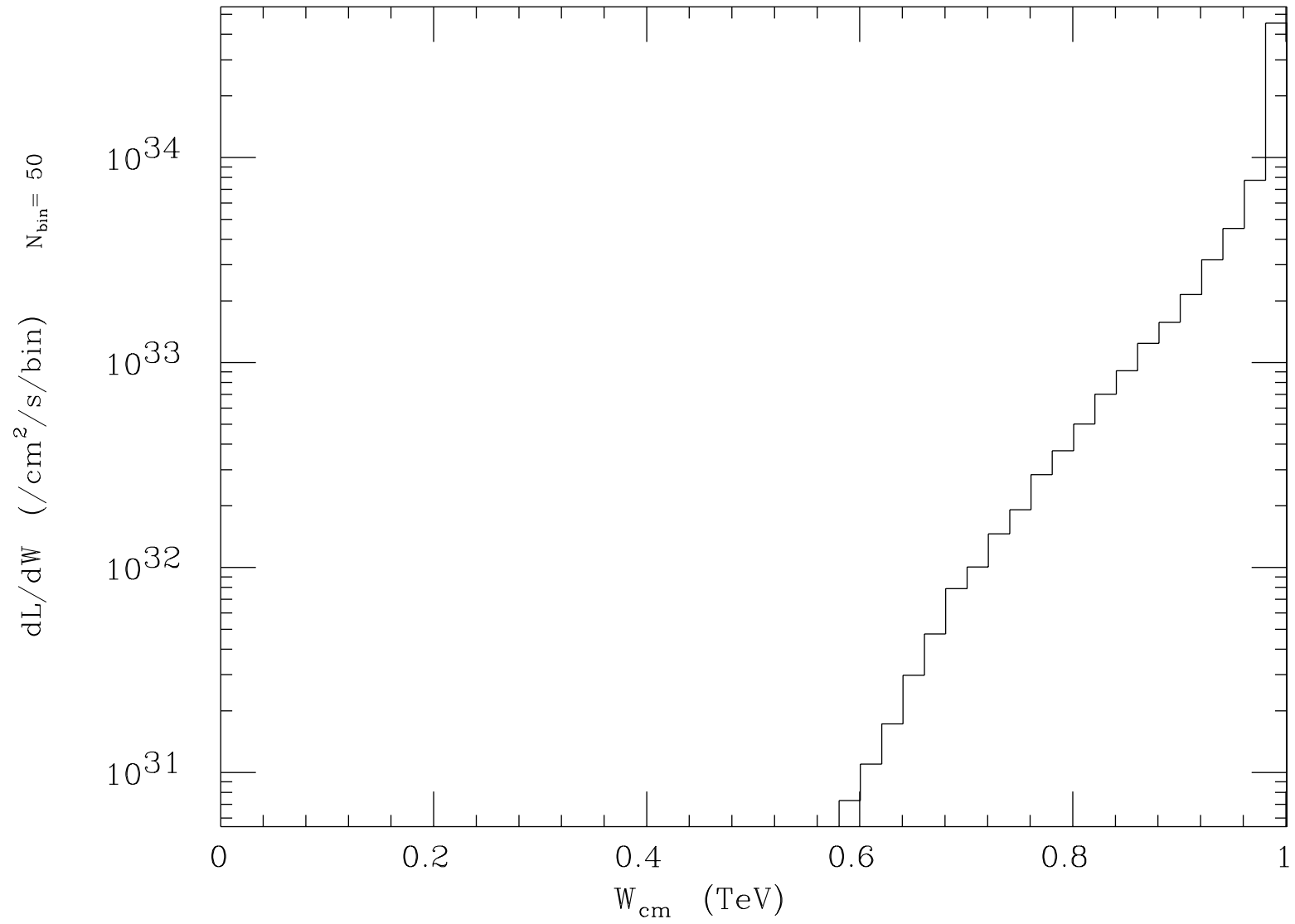


Incoherent Pair Angle Distribution



points inside	3228
points outside	741

X' (mrad)

Luminosity Spectrum (e^-e^+)

Total luminosity $6.911 \pm 0.011(\text{stat.}1\sigma)$ plotted range $6.911 \times 10^{34}/\text{cm}^2/\text{s}$