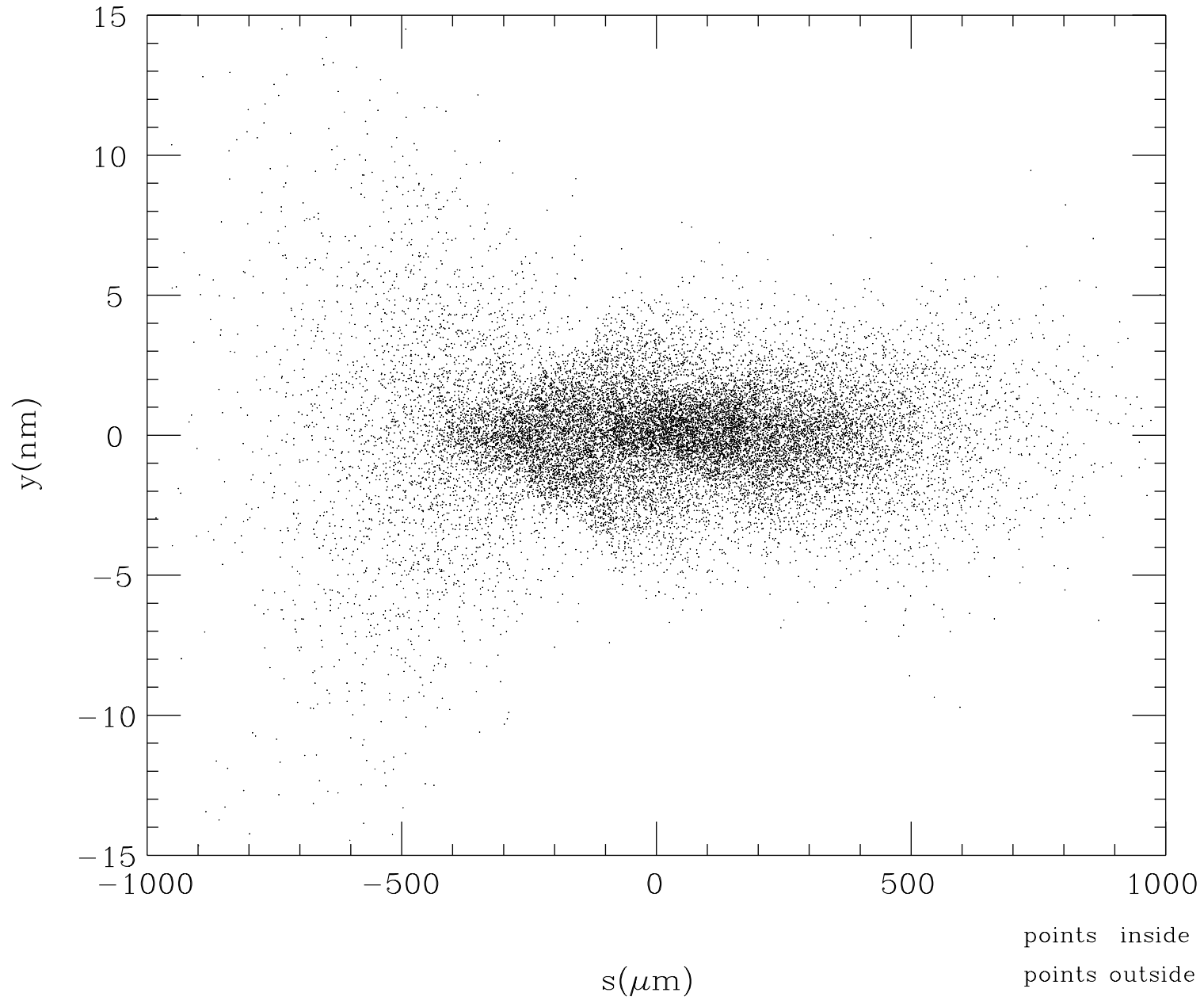
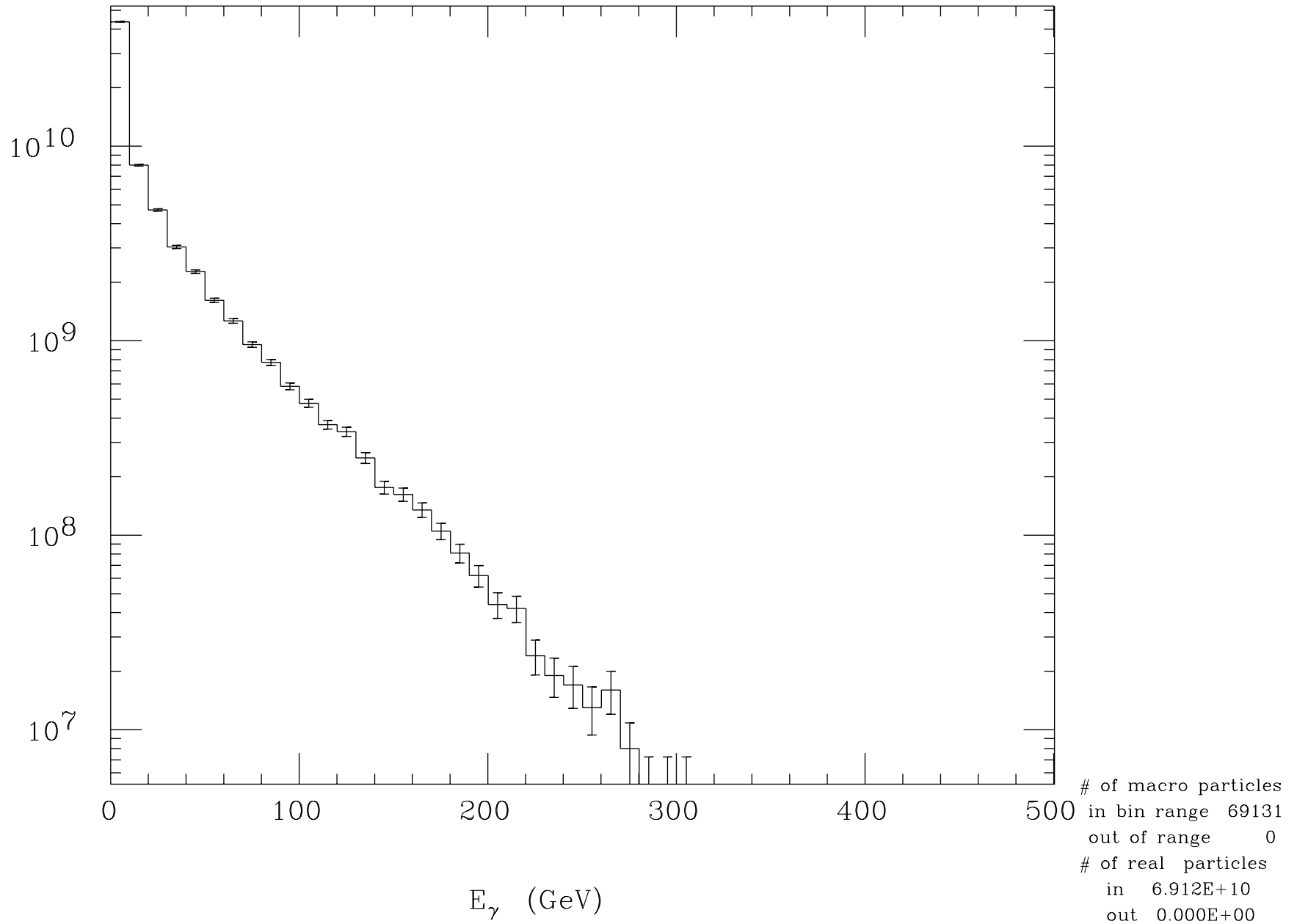


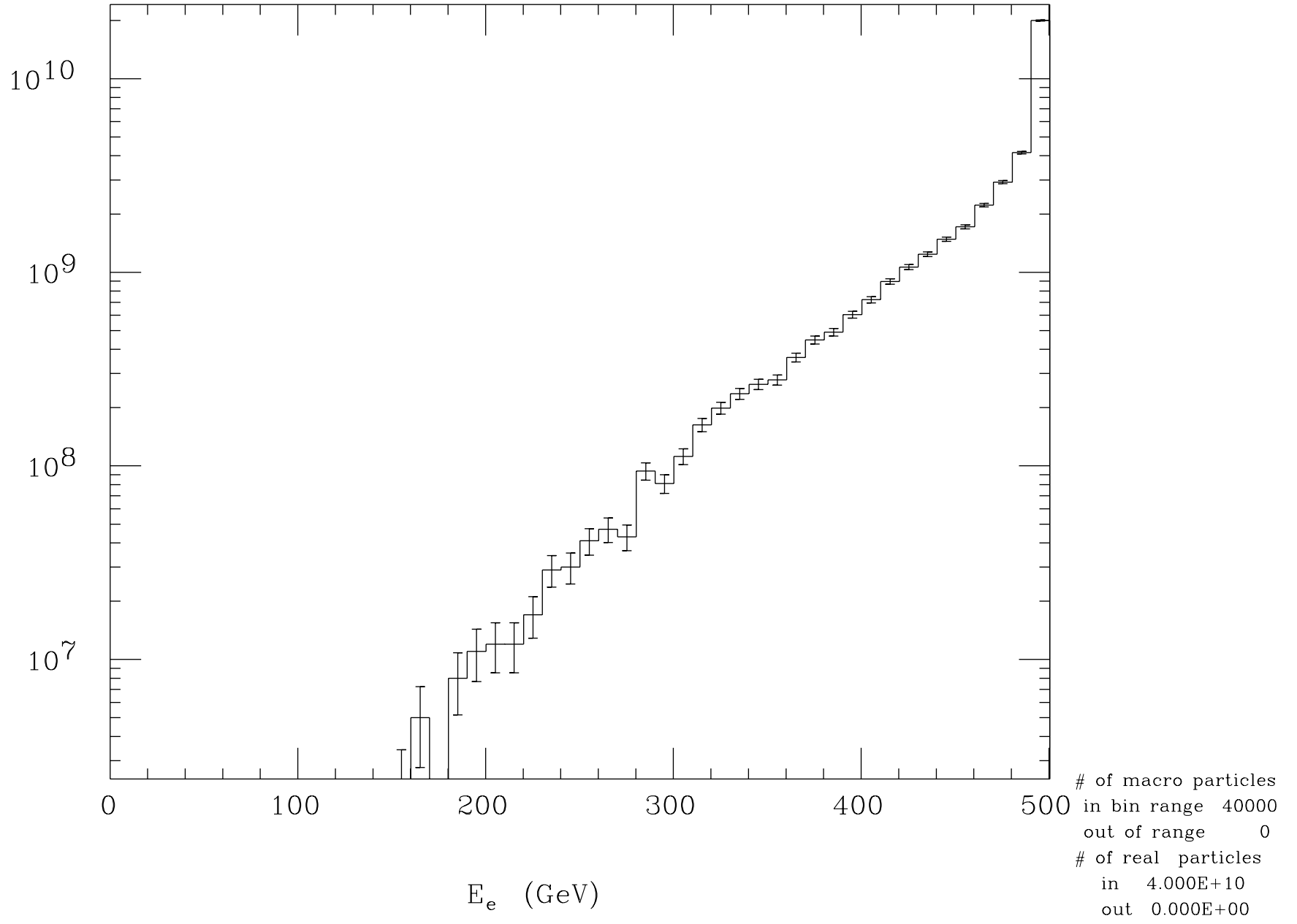
Electron Profile at t=0



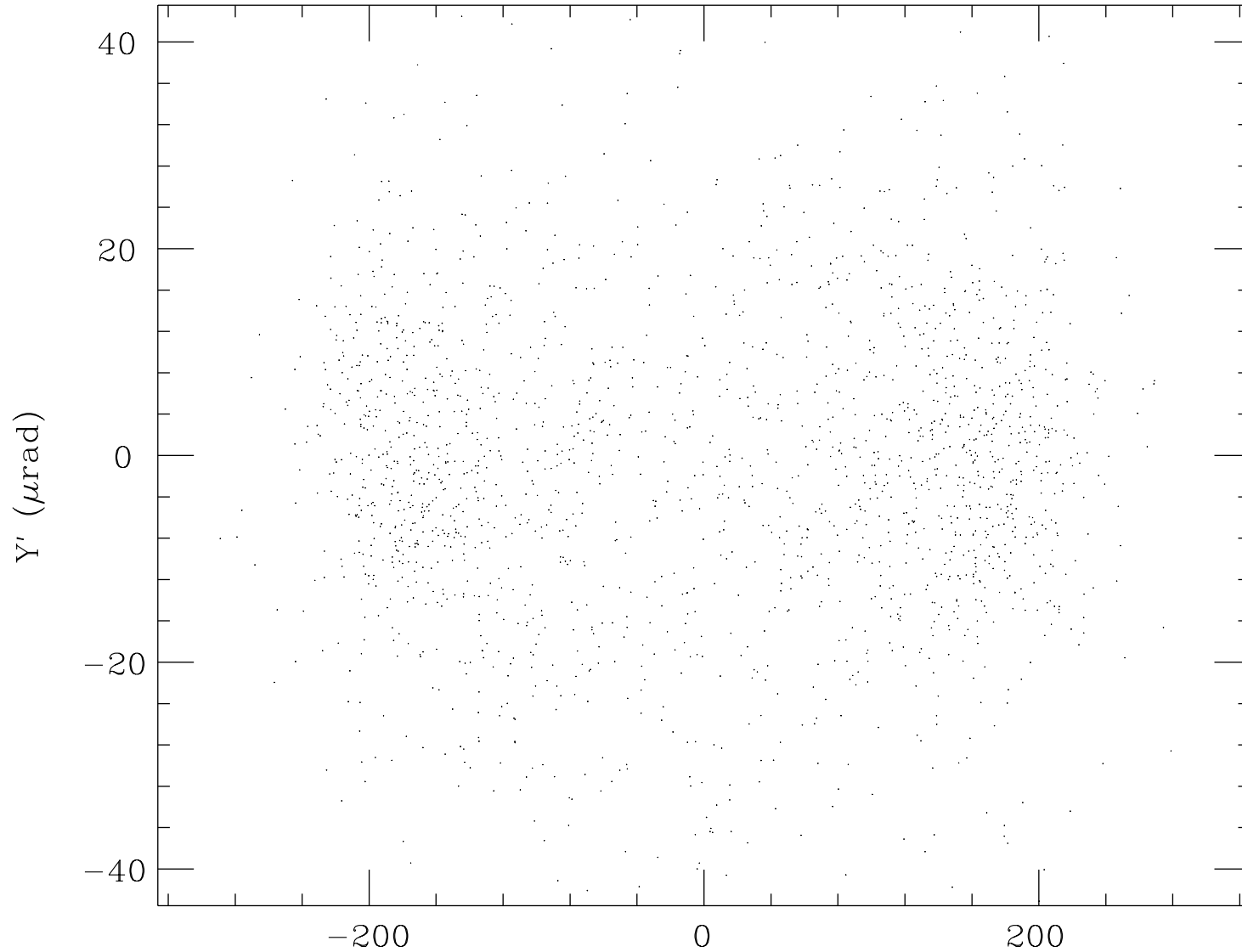
Beamstrahlung Energy Spectrum



Final Electron Energy Spectrum



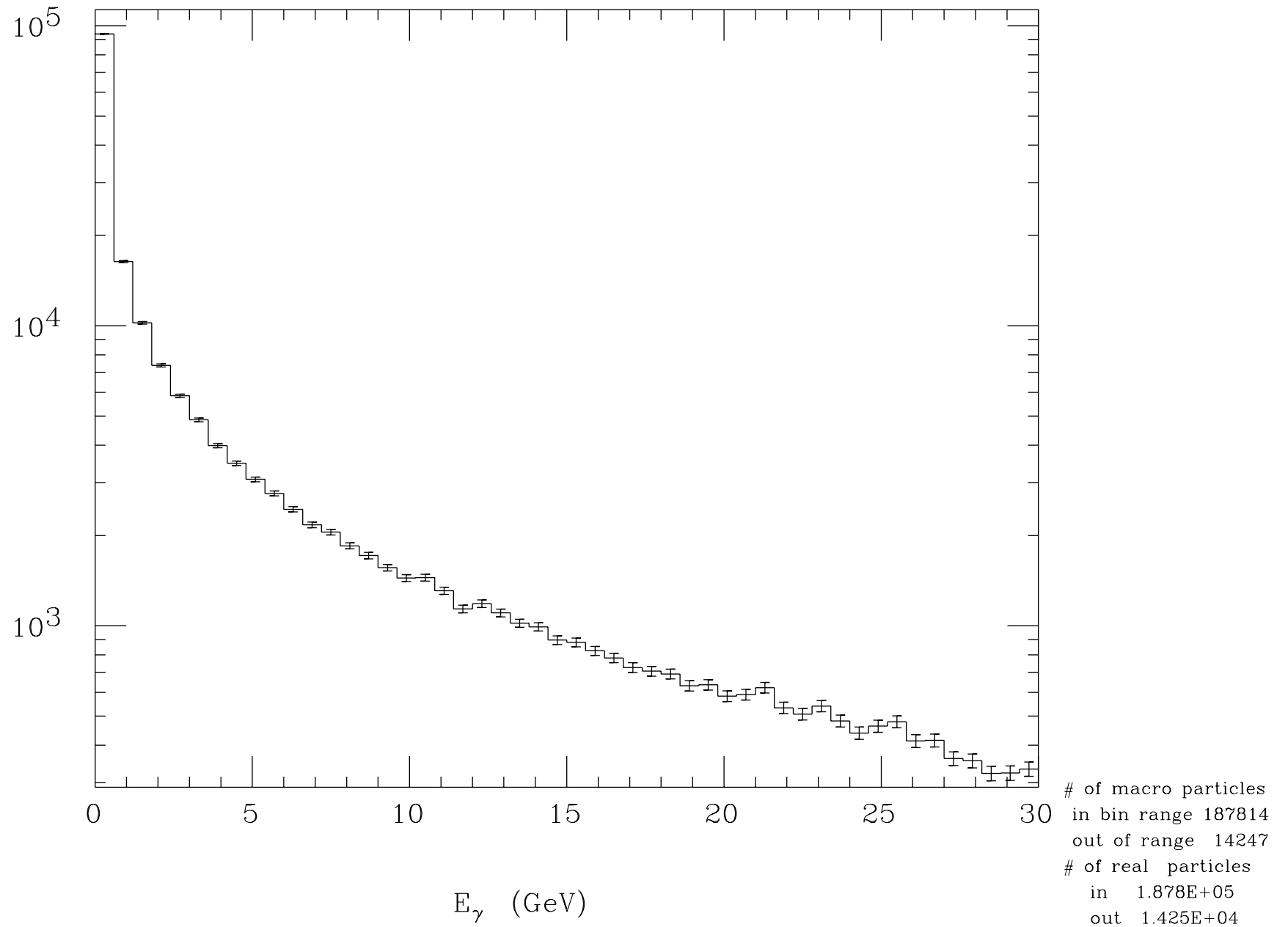
Final Electron Angle Distribution



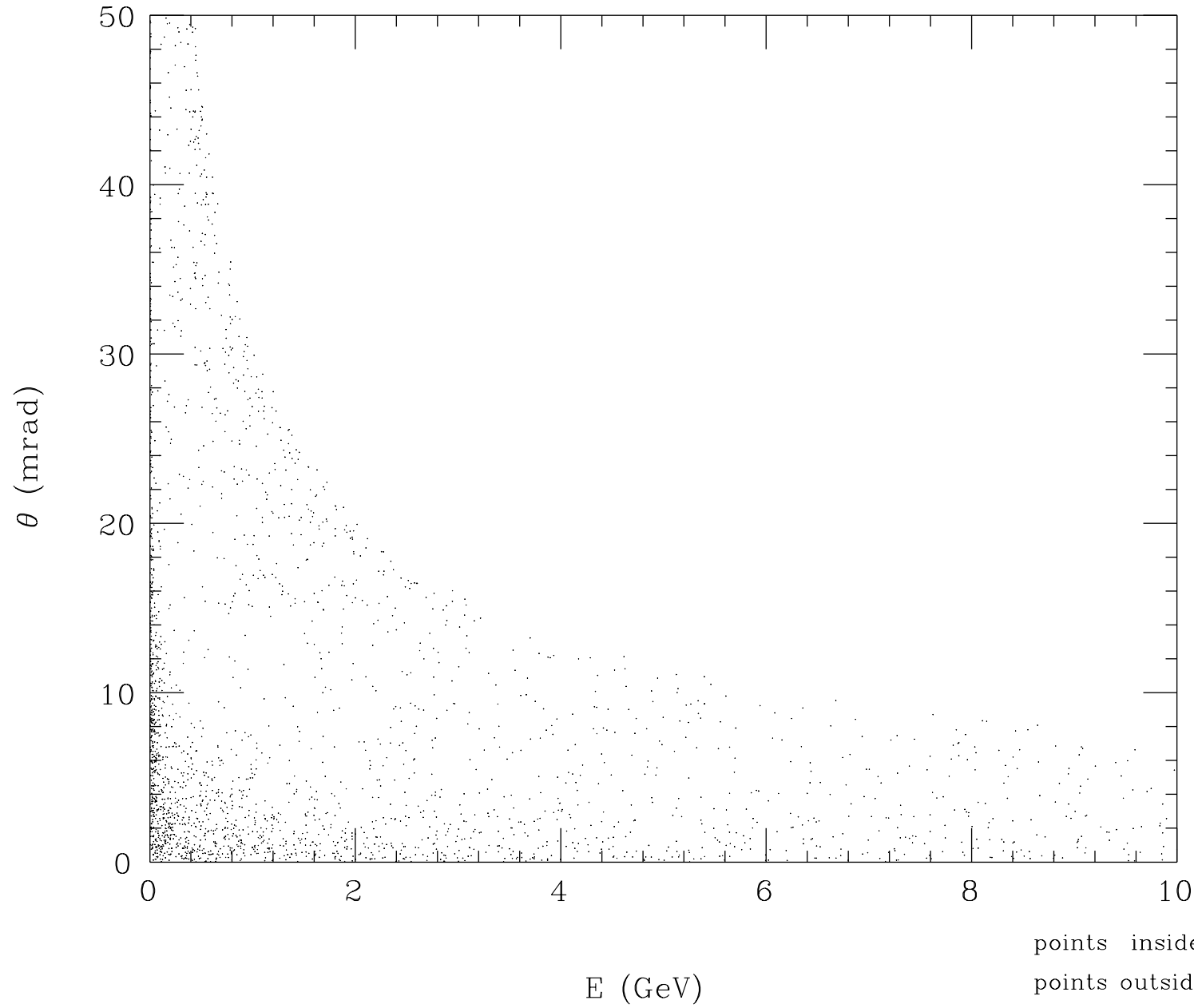
points inside	1933
points outside	36

$X' (\mu\text{rad})$

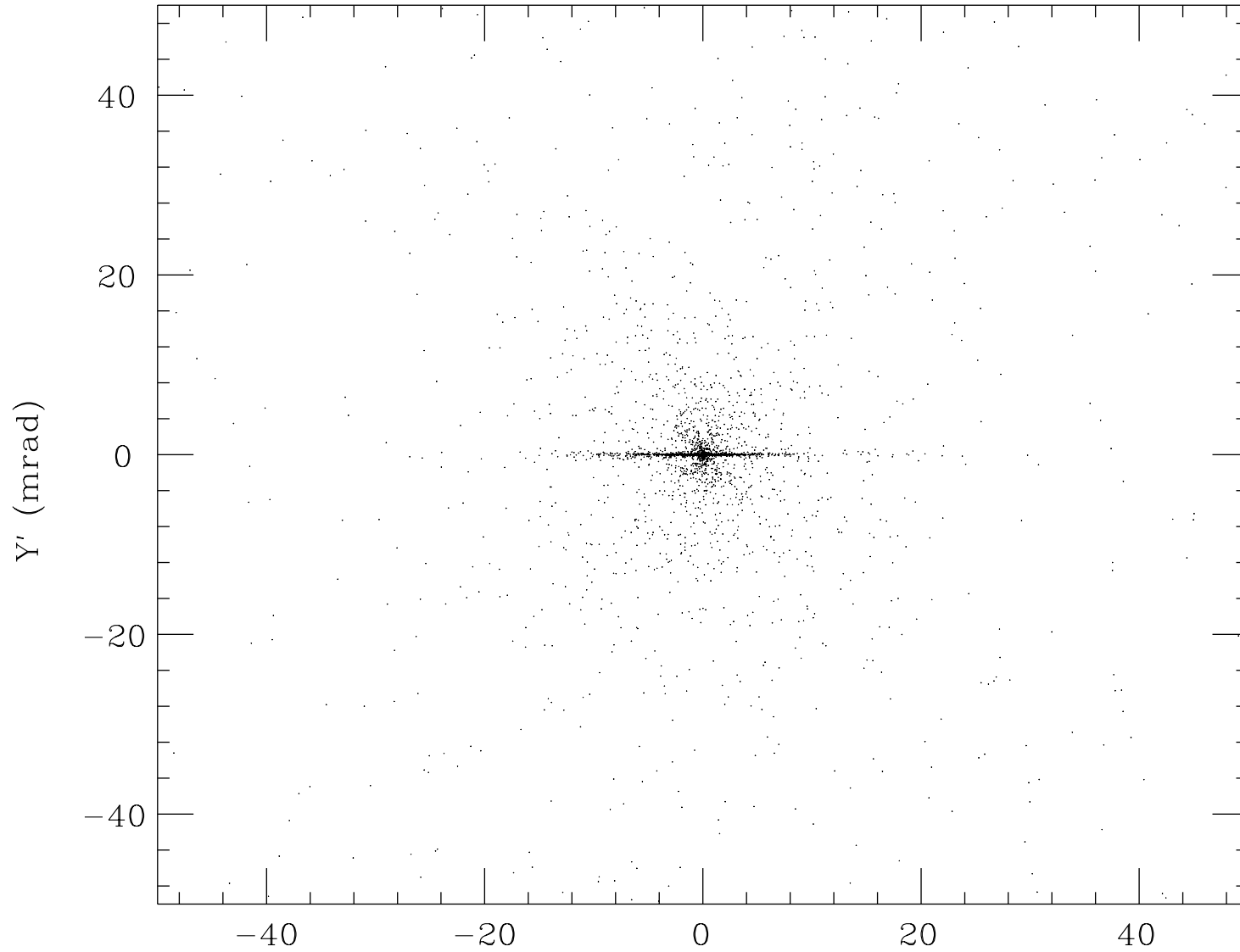
Incoherent Pair Energy Spectrum



Incoherent Pair Energy-Angle Distribution

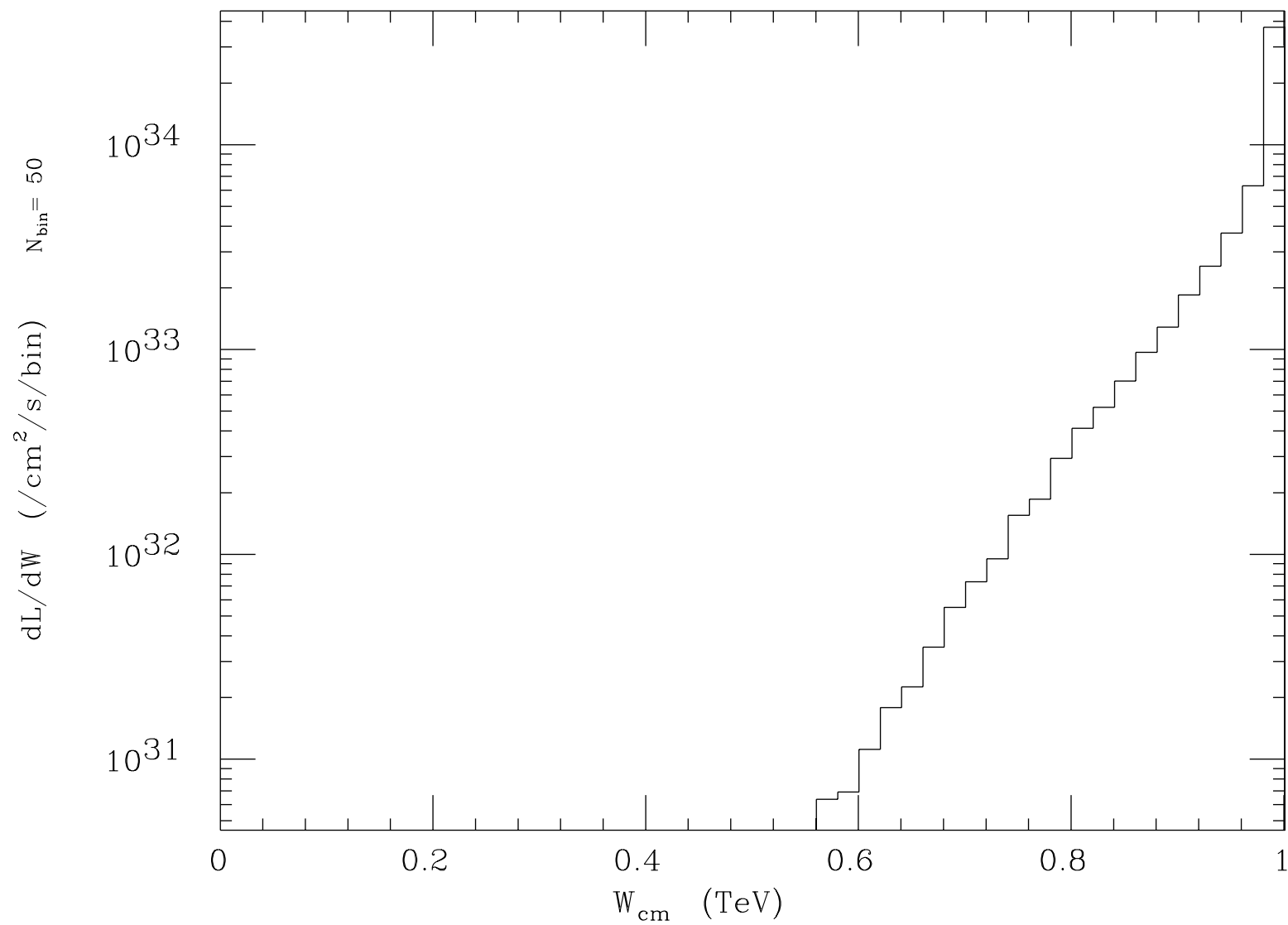


Incoherent Pair Angle Distribution



points inside	3221
points outside	751

X' (mrad)

Luminosity Spectrum (e^-e^+)

Total luminosity $5.671 \pm 0.009(\text{stat.}1\sigma)$ plotted range $5.671 \times 10^{34}/\text{cm}^2/\text{s}$