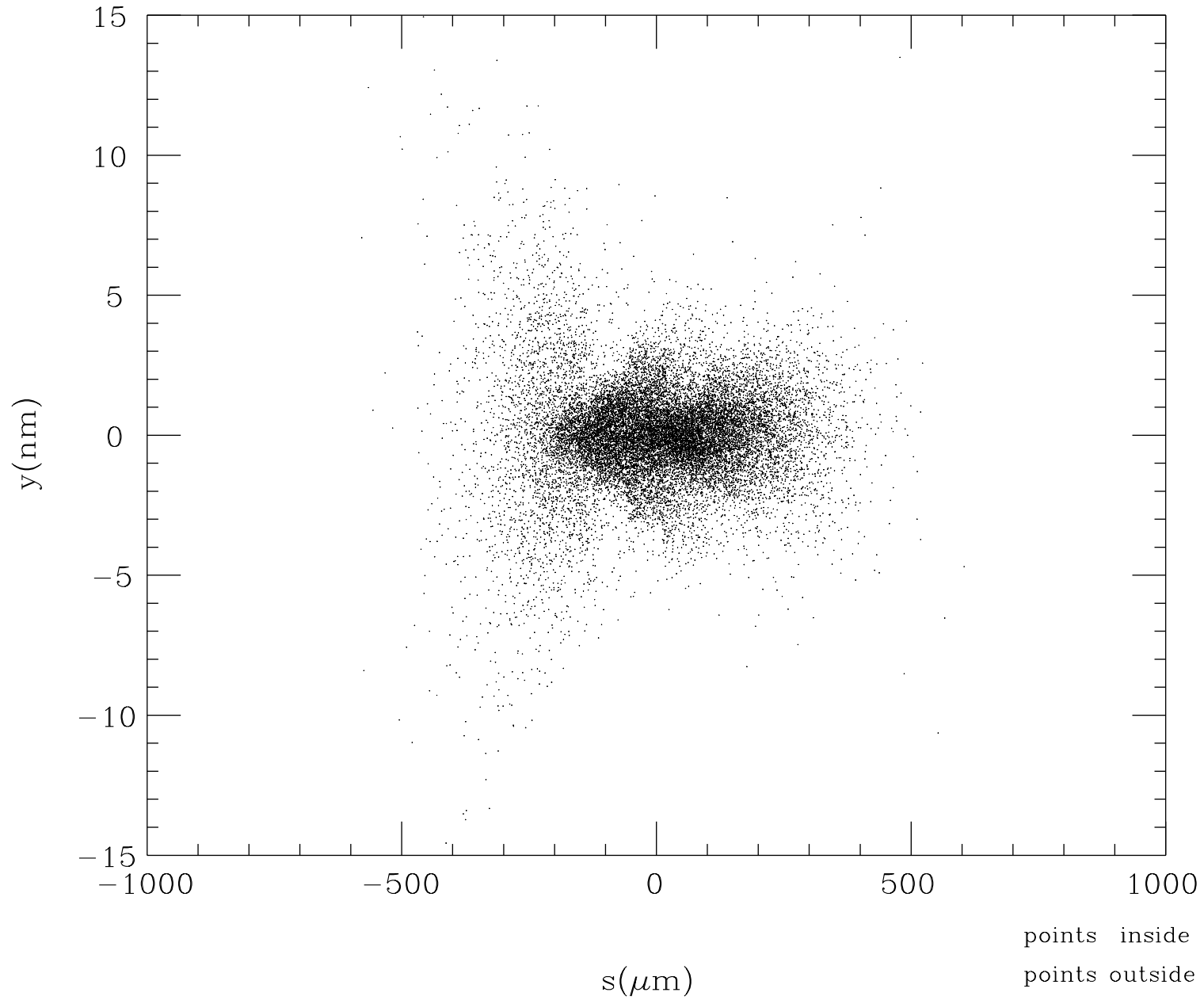
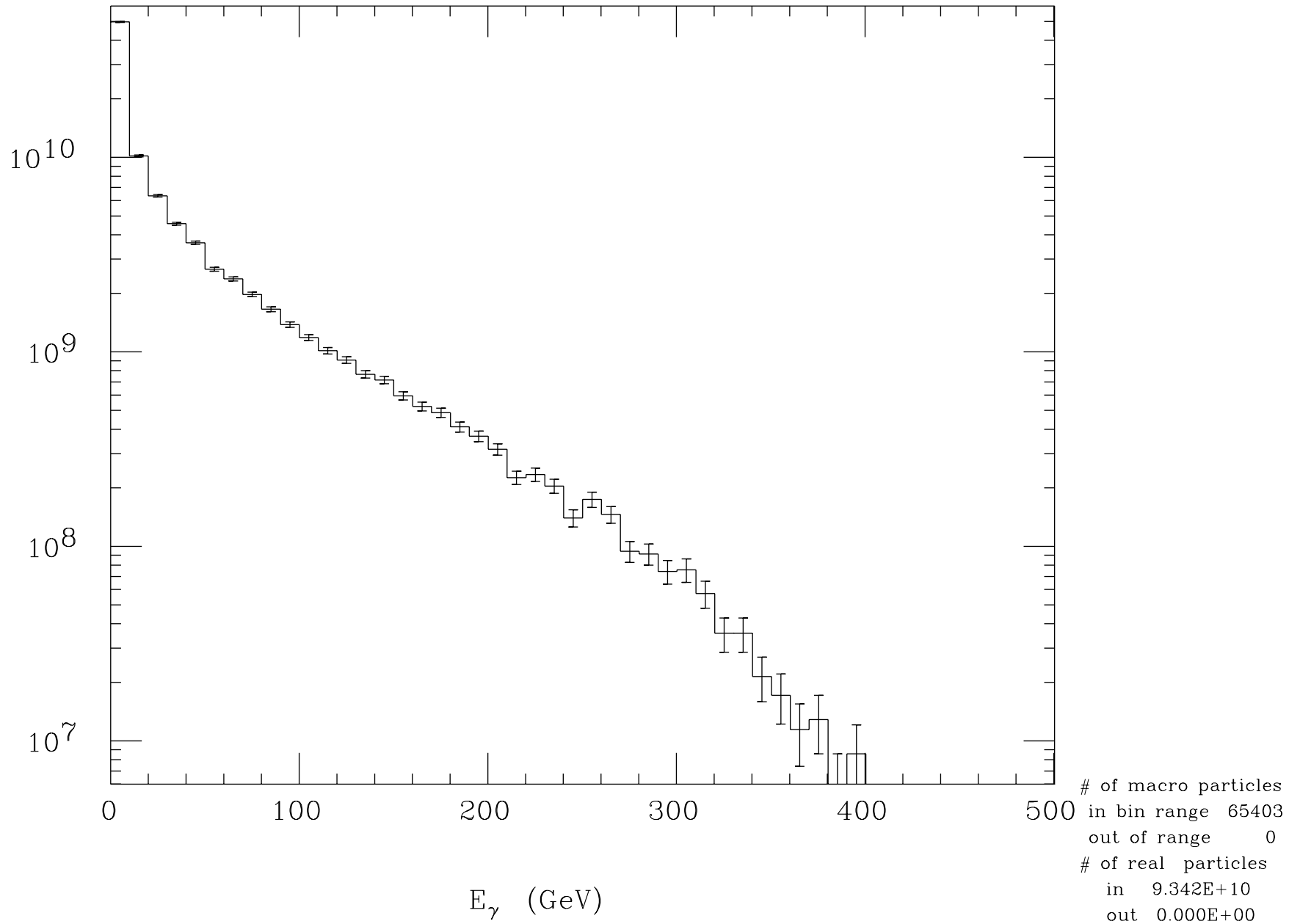


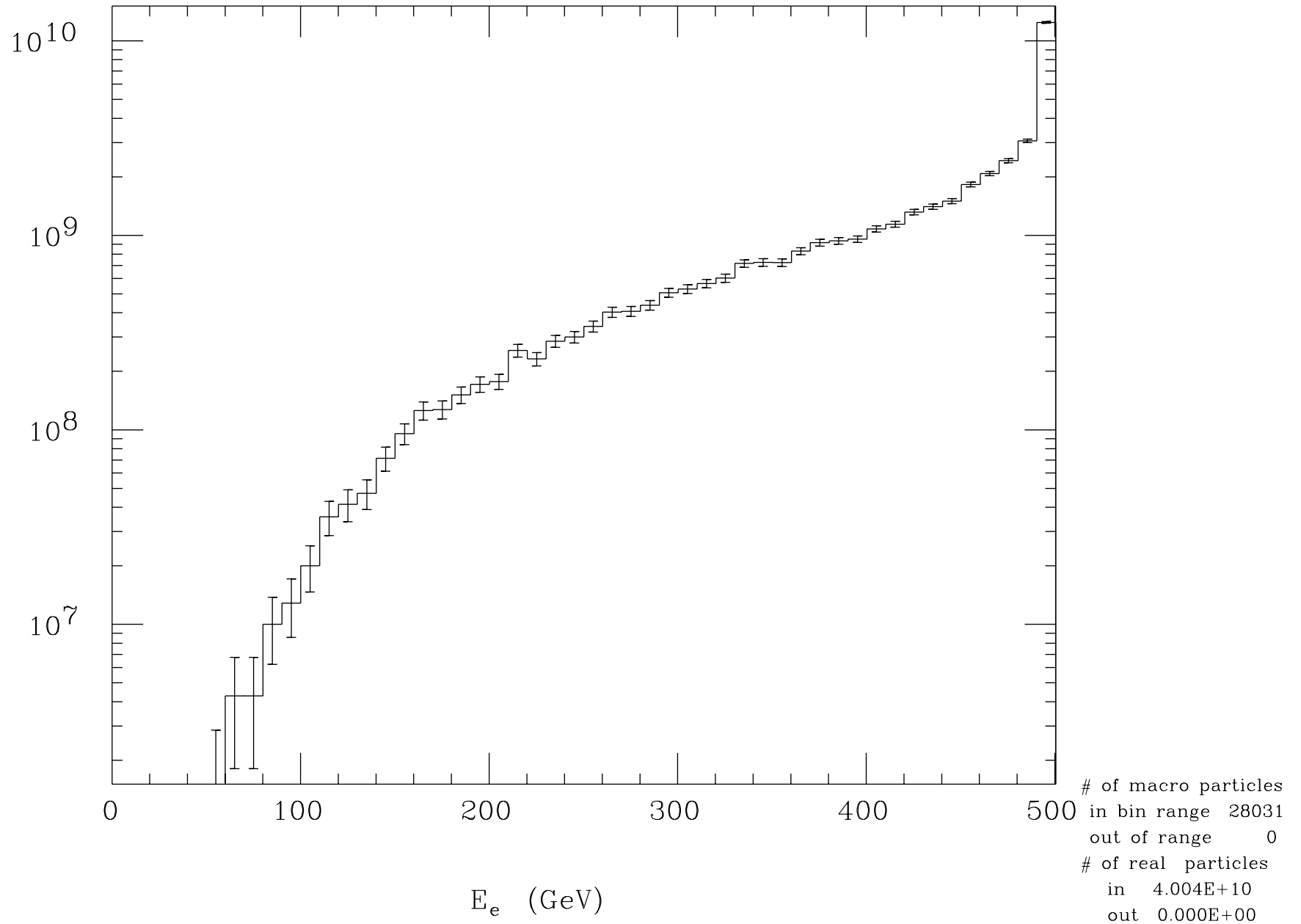
# Electron Profile at t=0



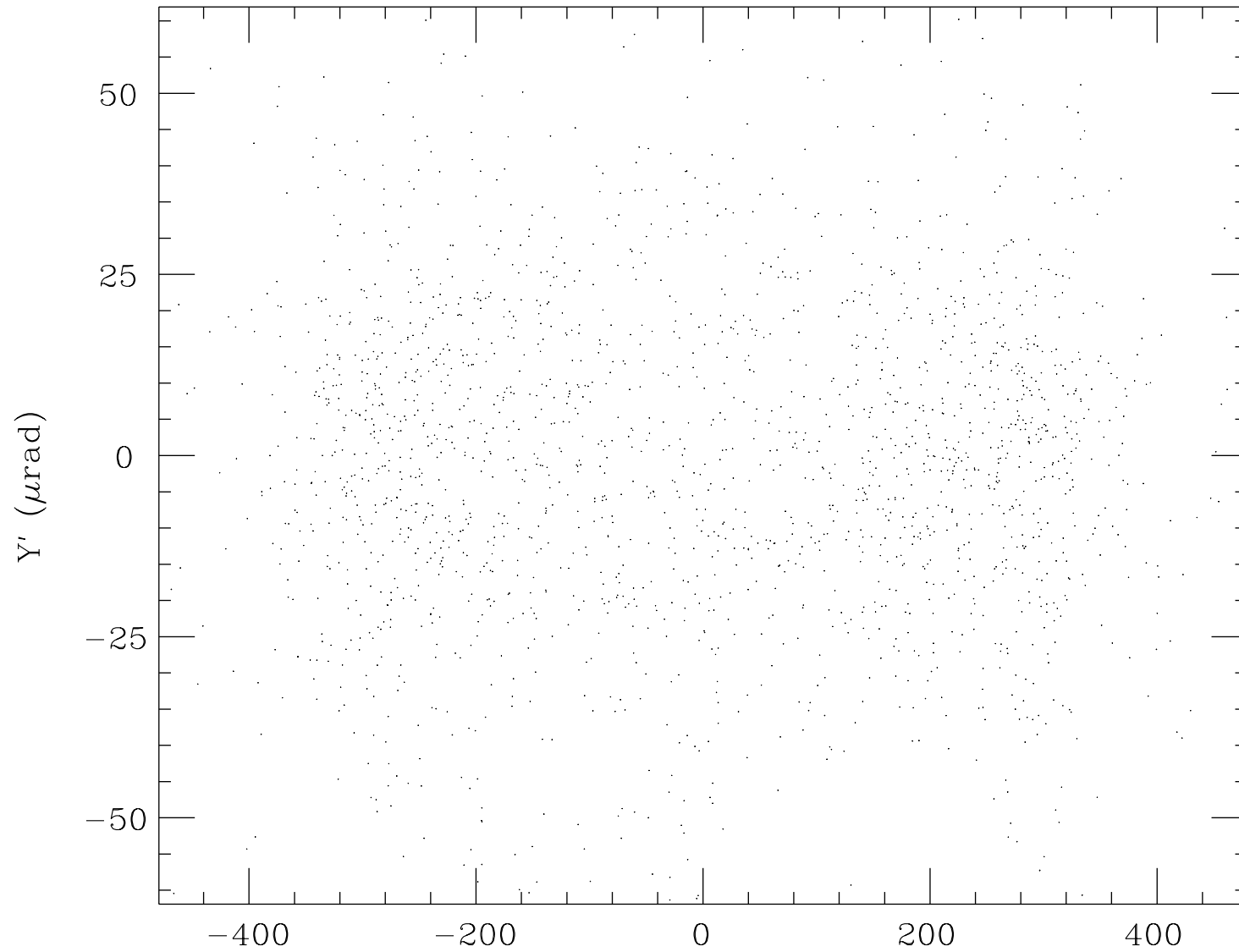
## Beamstrahlung Energy Spectrum



## Final Electron Energy Spectrum



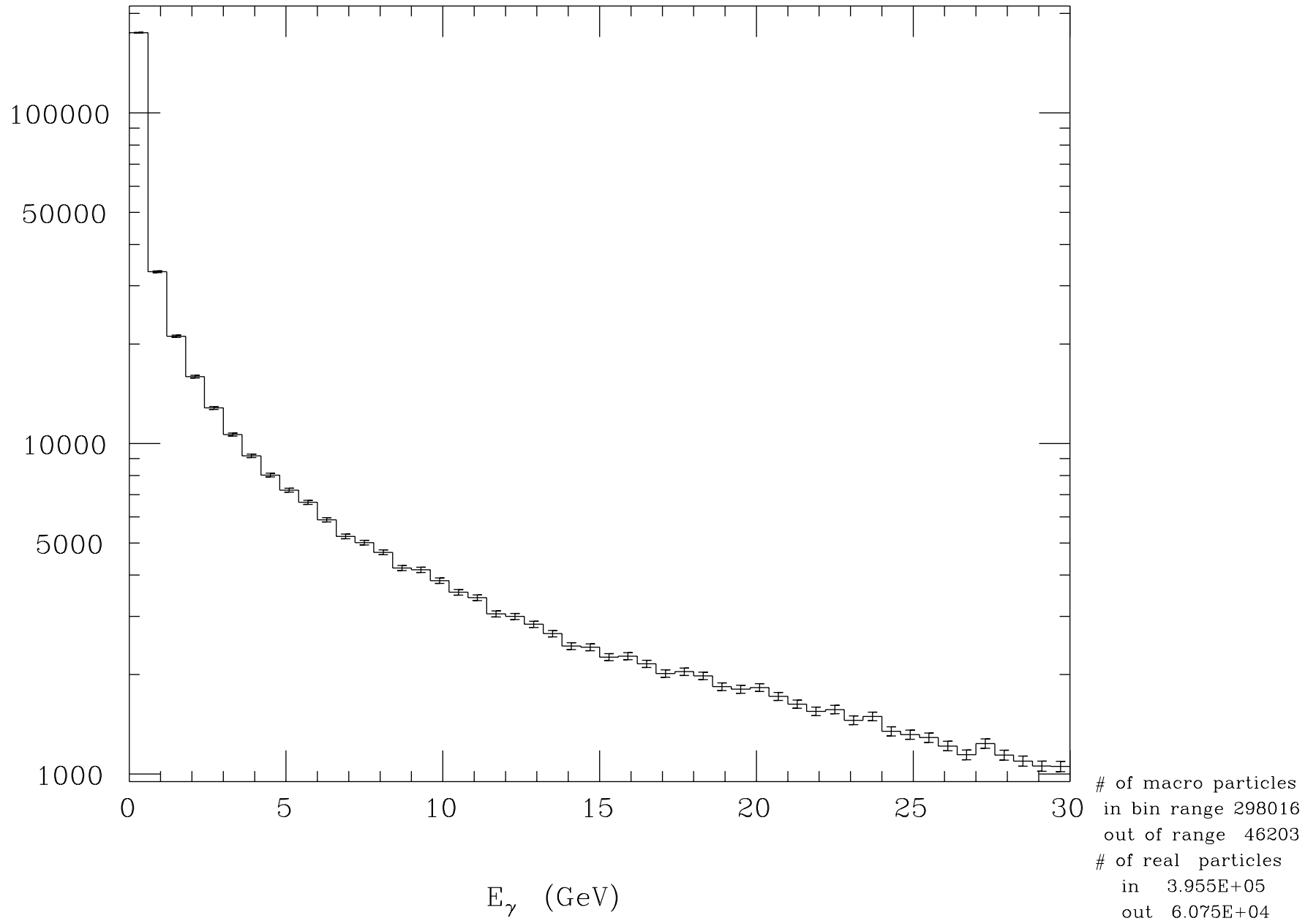
# Final Electron Angle Distribution



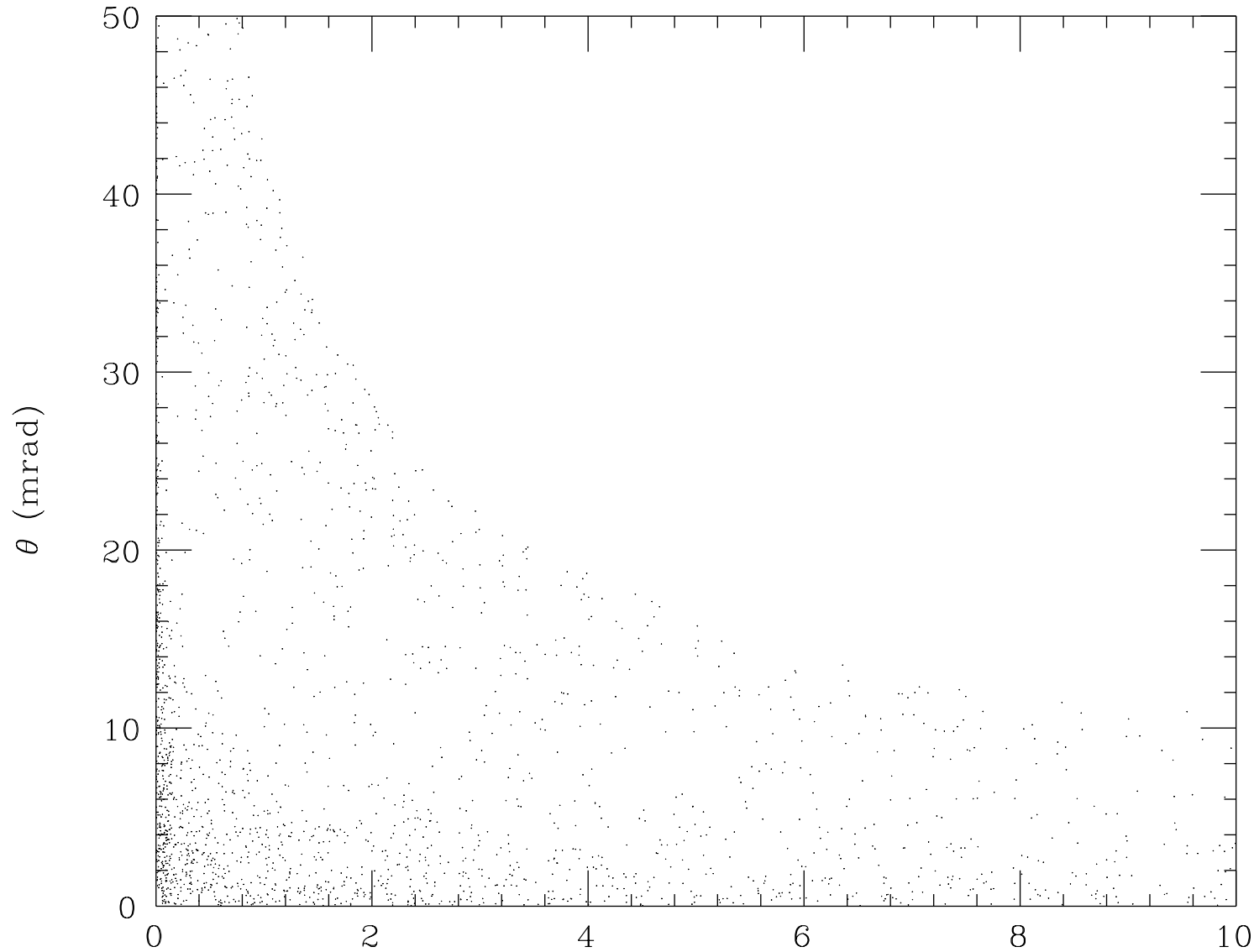
points inside	1930
points outside	85

$X' (\mu\text{rad})$

## Incoherent Pair Energy Spectrum



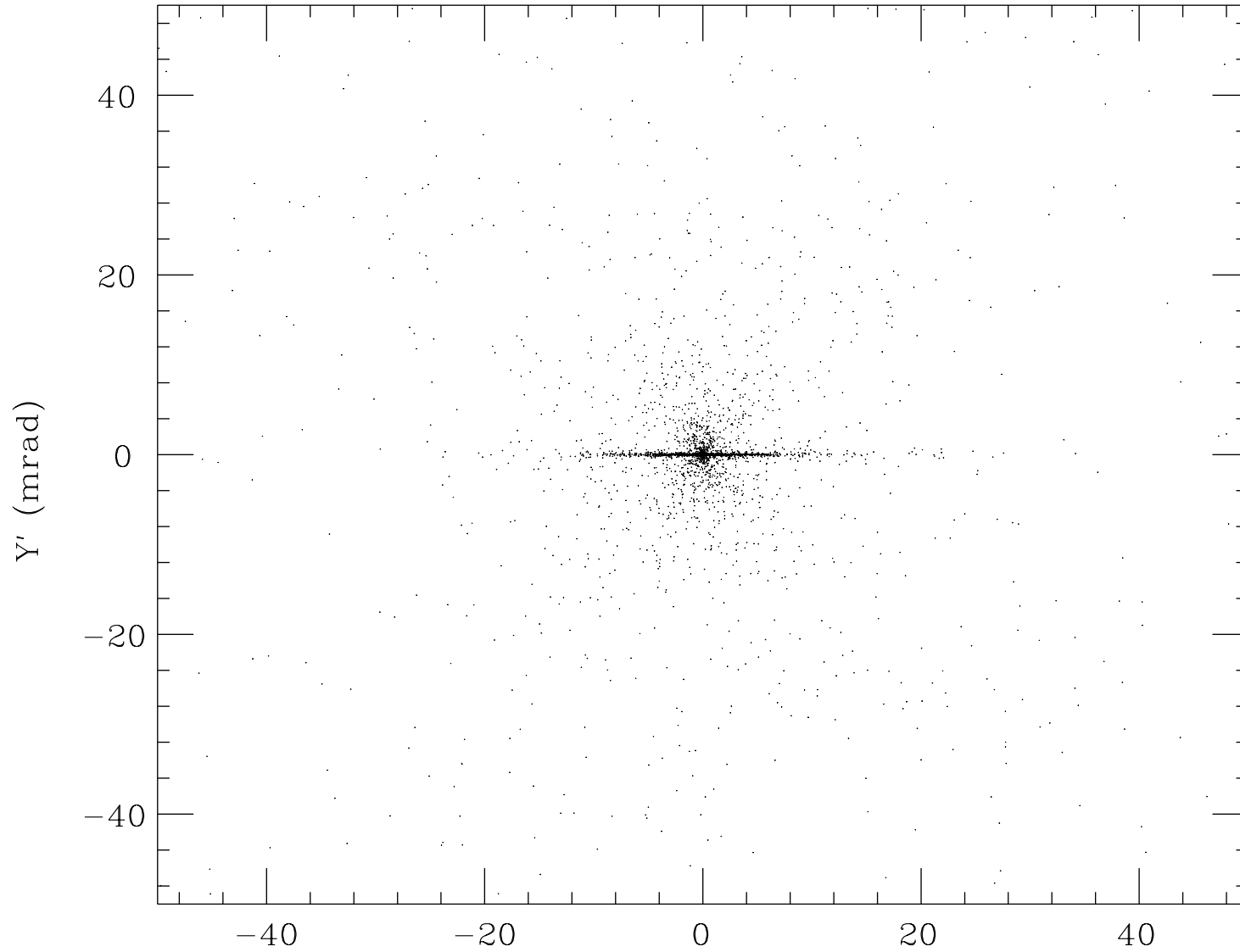
# Incoherent Pair Energy-Angle Distribution



points inside	2051
points outside	1788

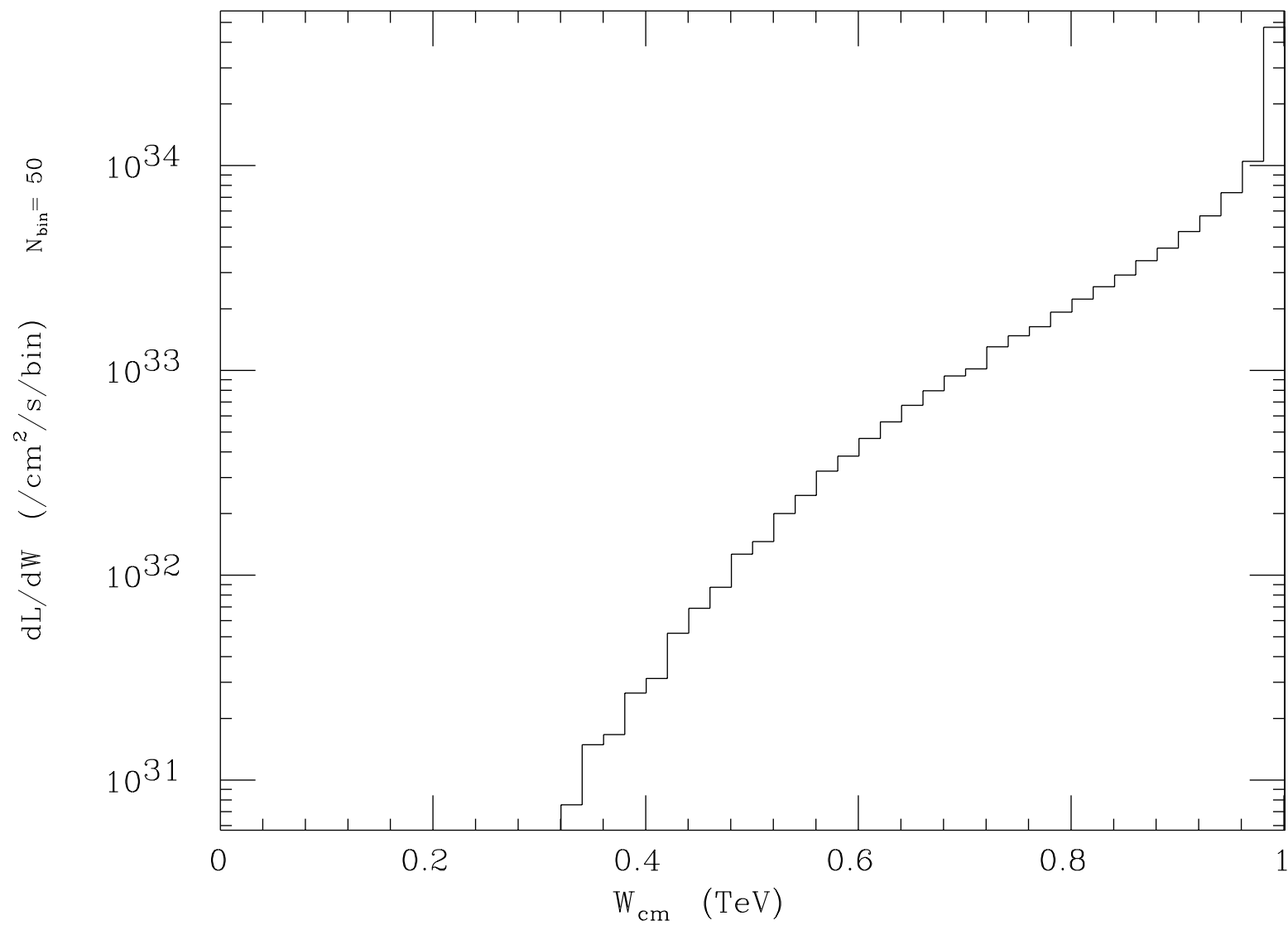
E (GeV)

# Incoherent Pair Angle Distribution



points inside	3294
points outside	736

$X'$  (mrad)

Luminosity Spectrum ( $e^-, e^+$ )

Total luminosity  $1.033 \pm 0.002(\text{stat.}1\sigma)$  plotted range  $1.033 \times 10^{35}/\text{cm}^2/\text{s}$