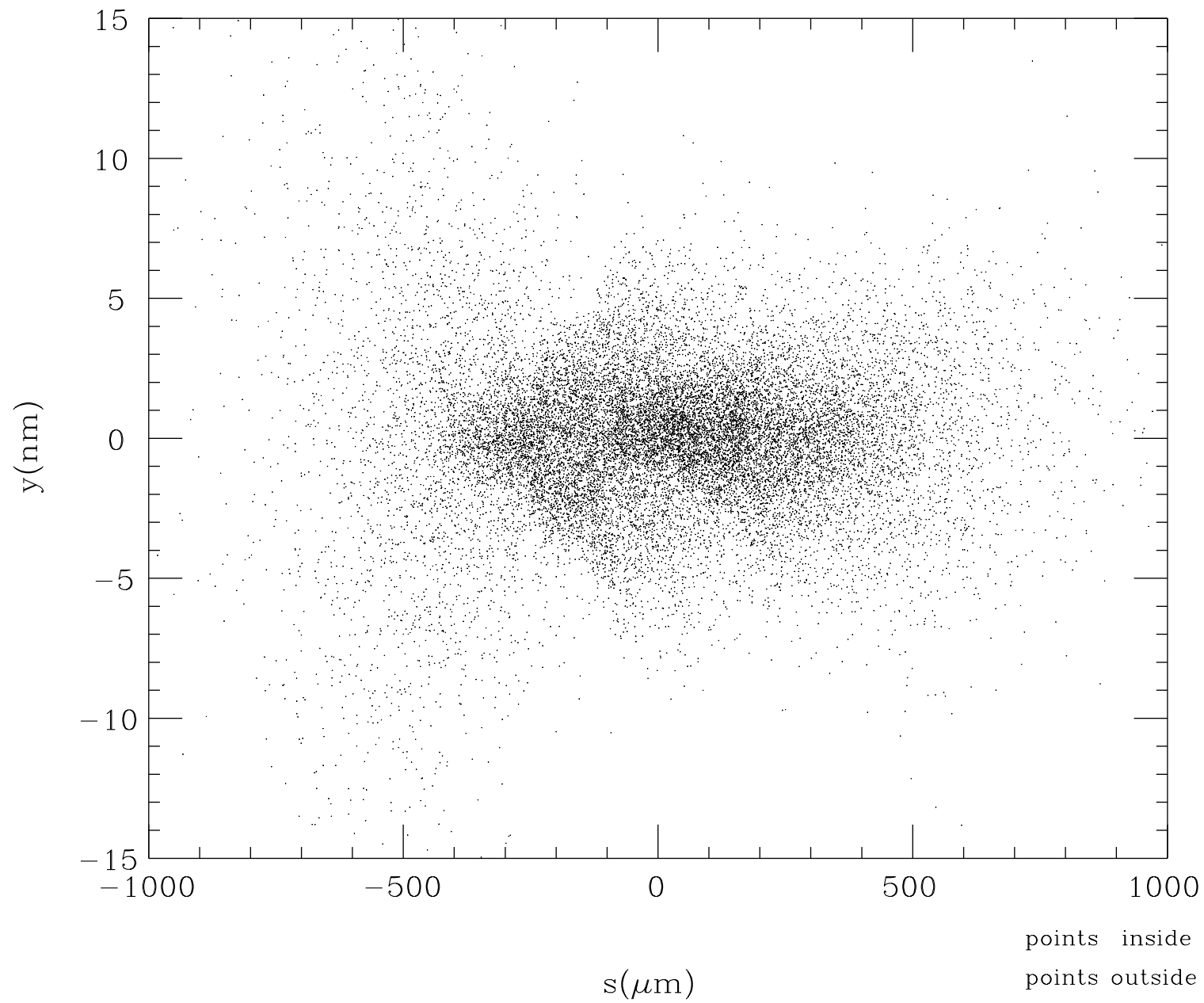
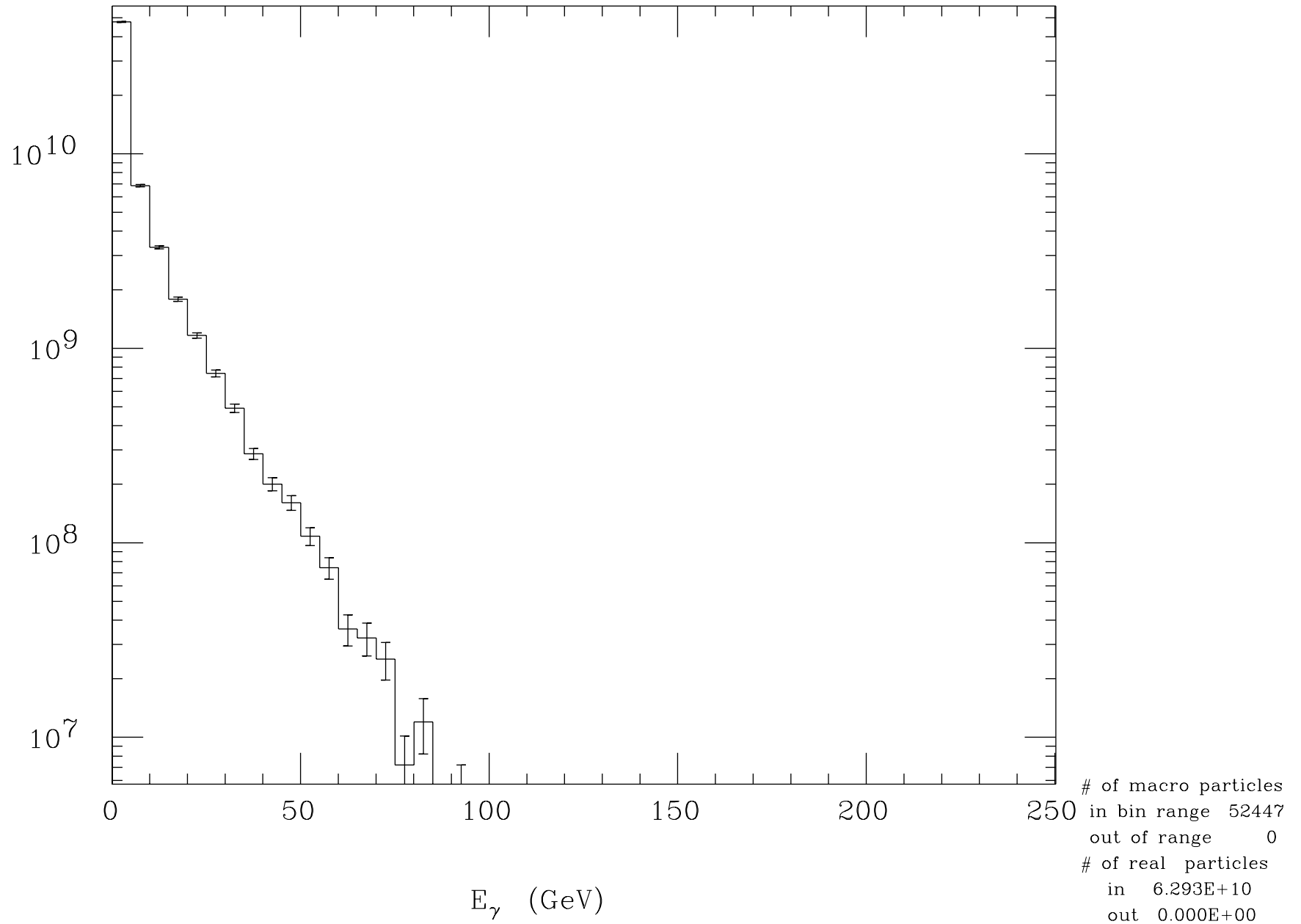


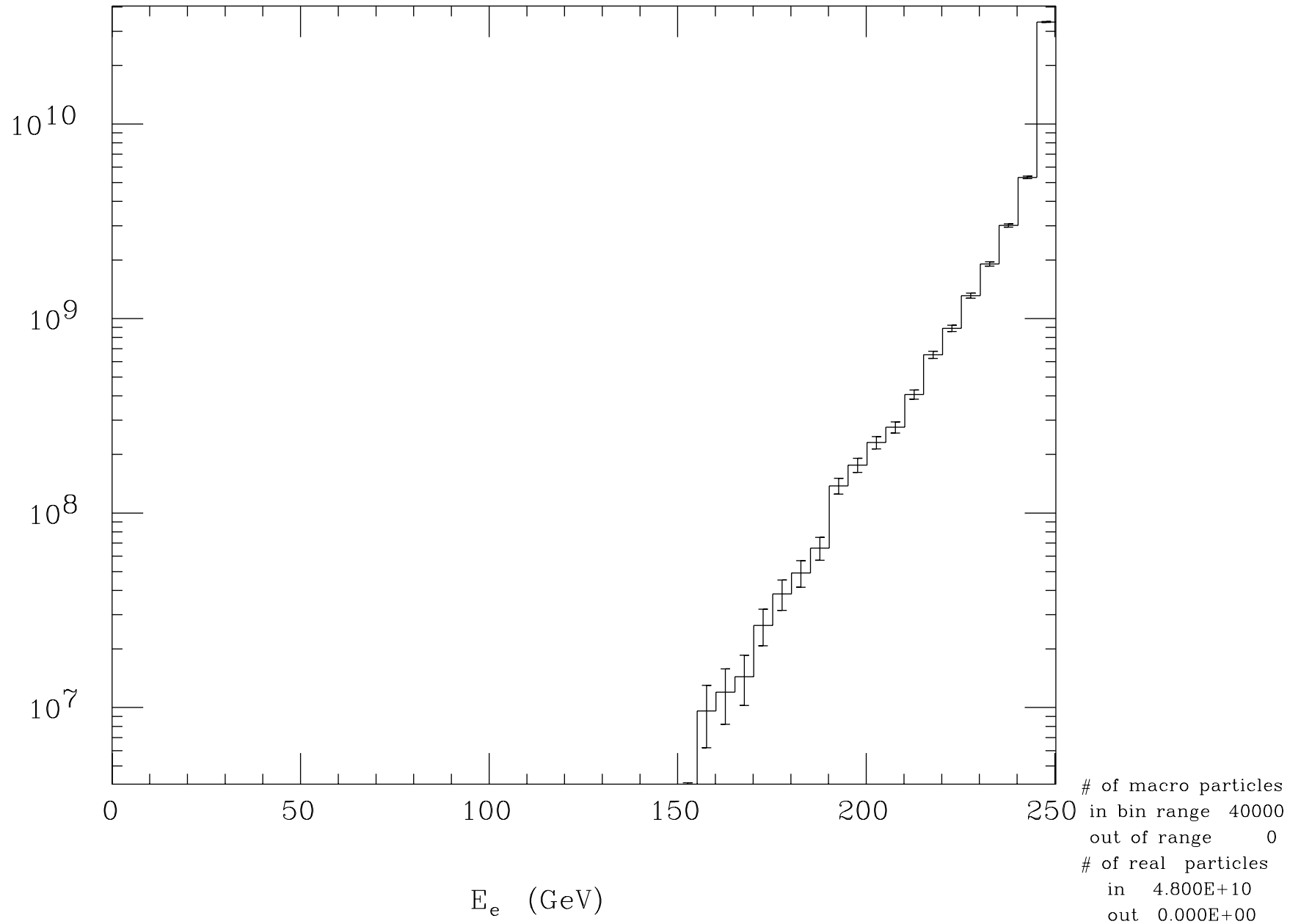
# Electron Profile at t=0



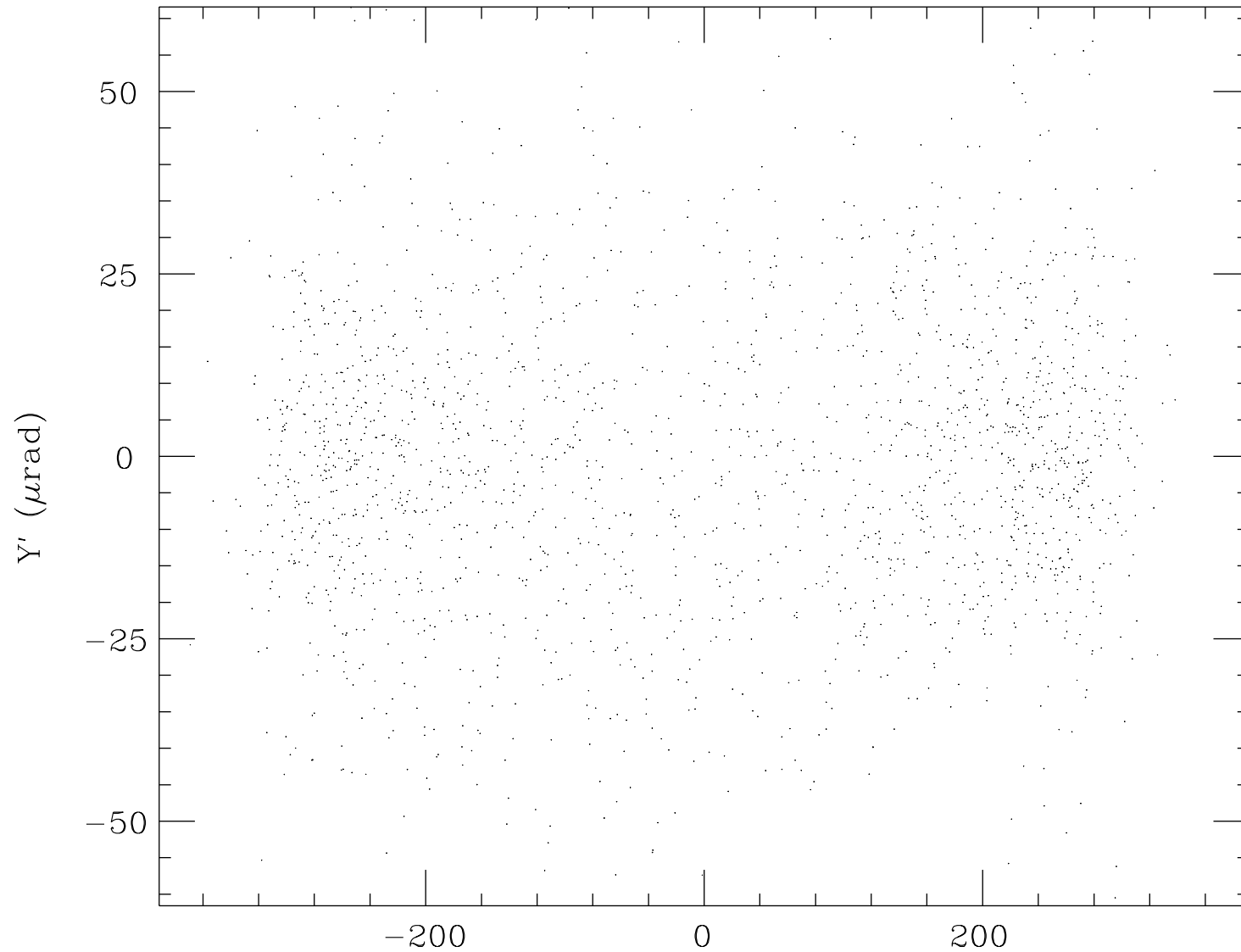
## Beamstrahlung Energy Spectrum



## Final Electron Energy Spectrum



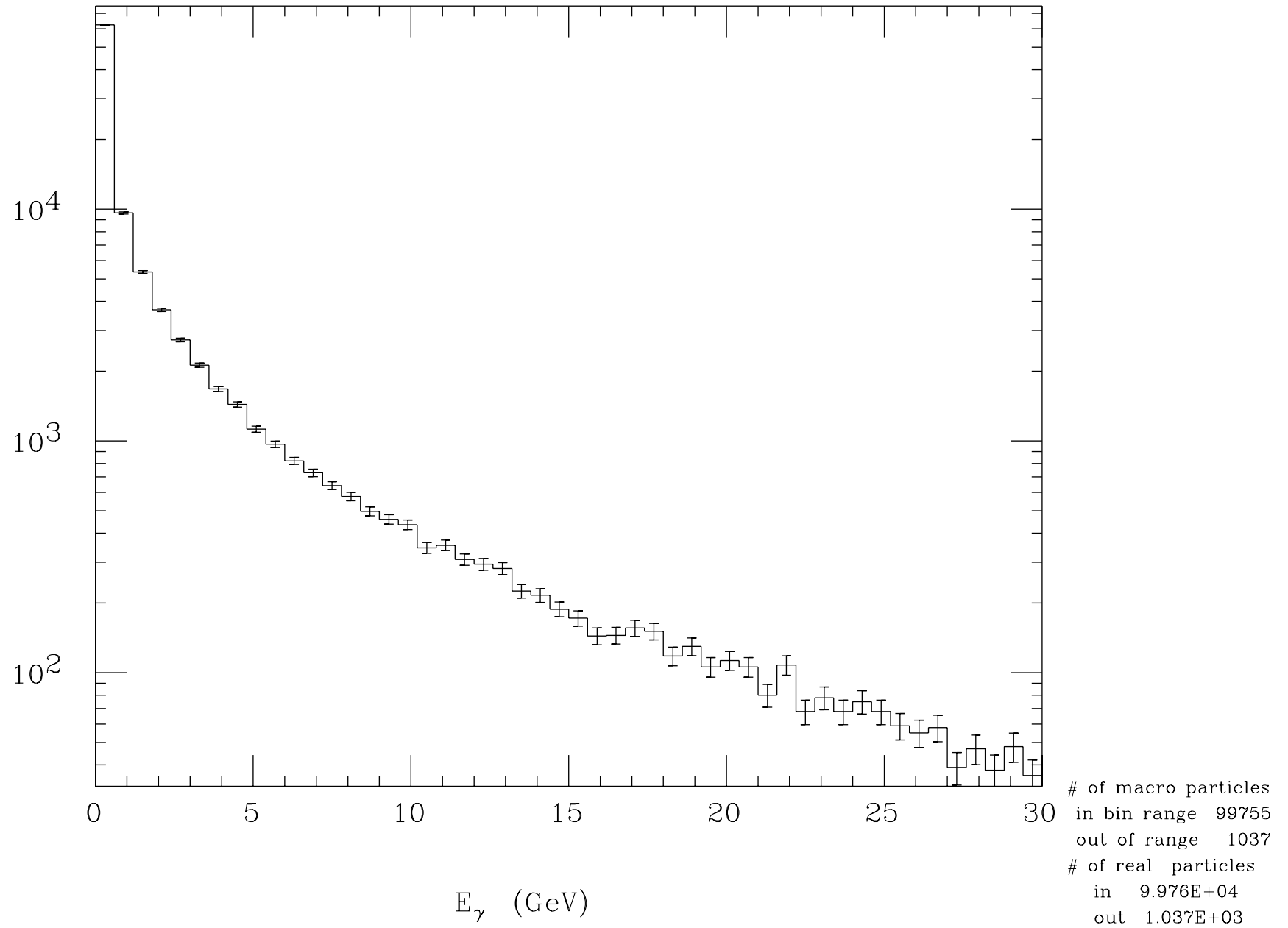
# Final Electron Angle Distribution



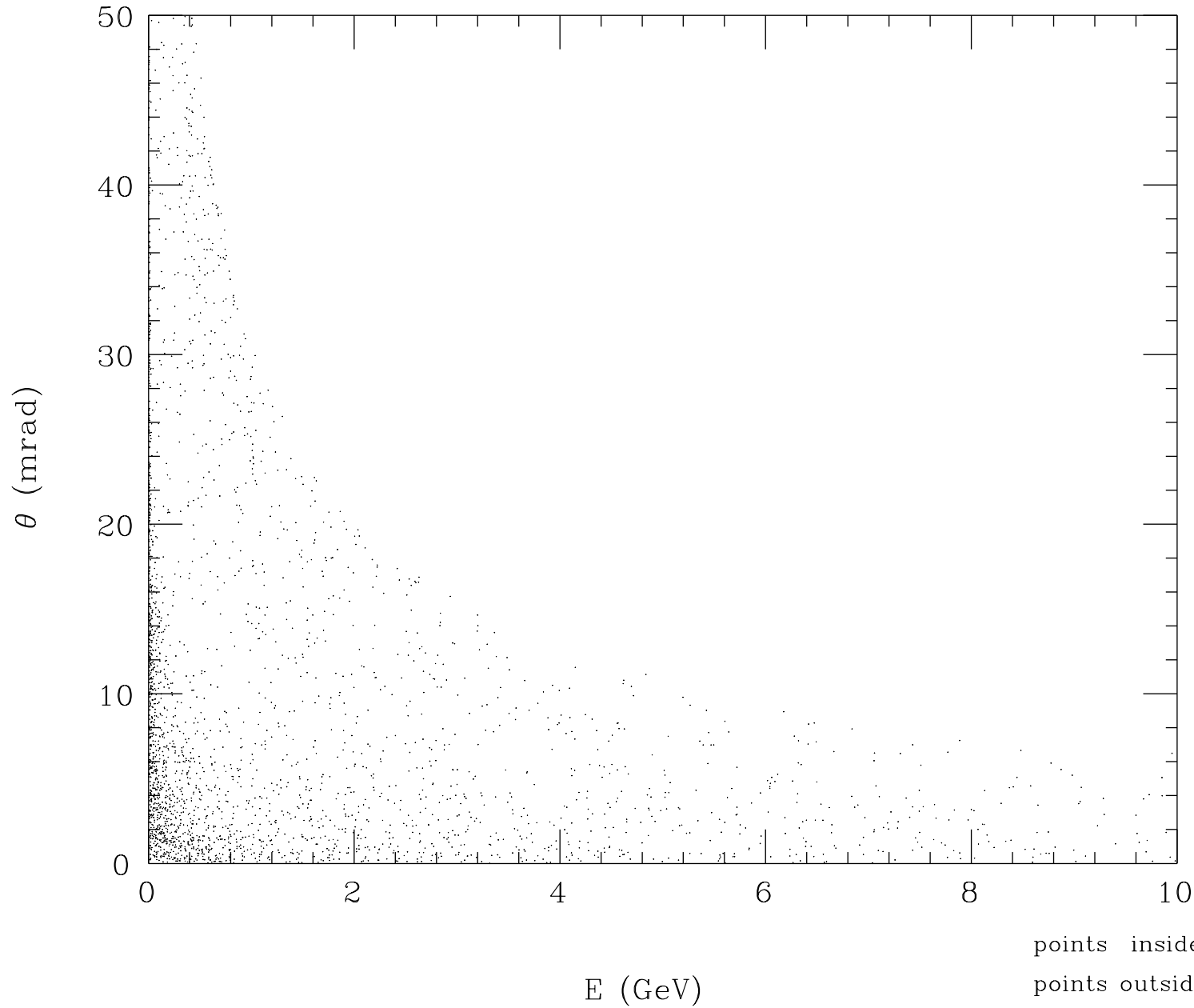
points inside	1941
points outside	29

$X' (\mu\text{rad})$

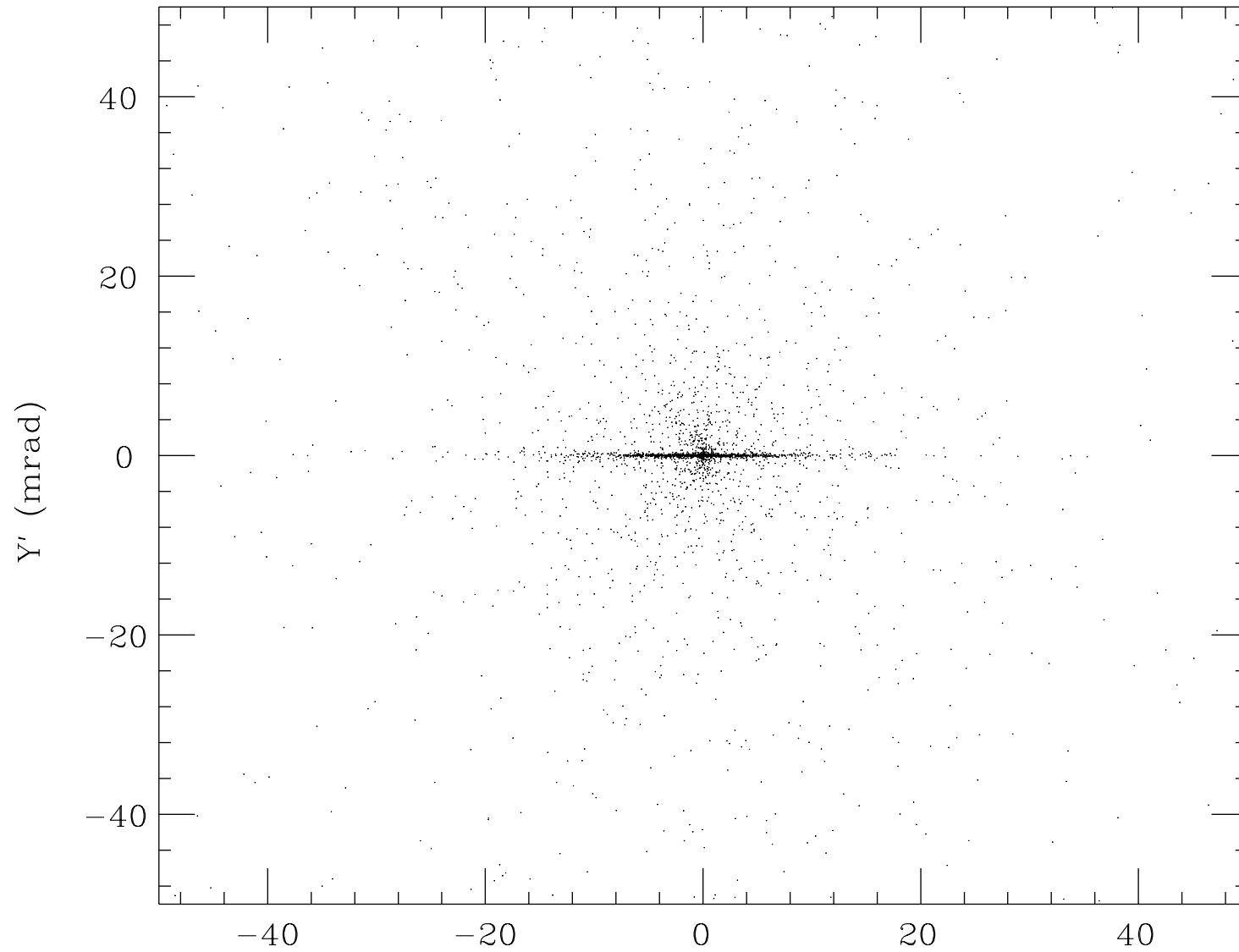
## Incoherent Pair Energy Spectrum



# Incoherent Pair Energy-Angle Distribution

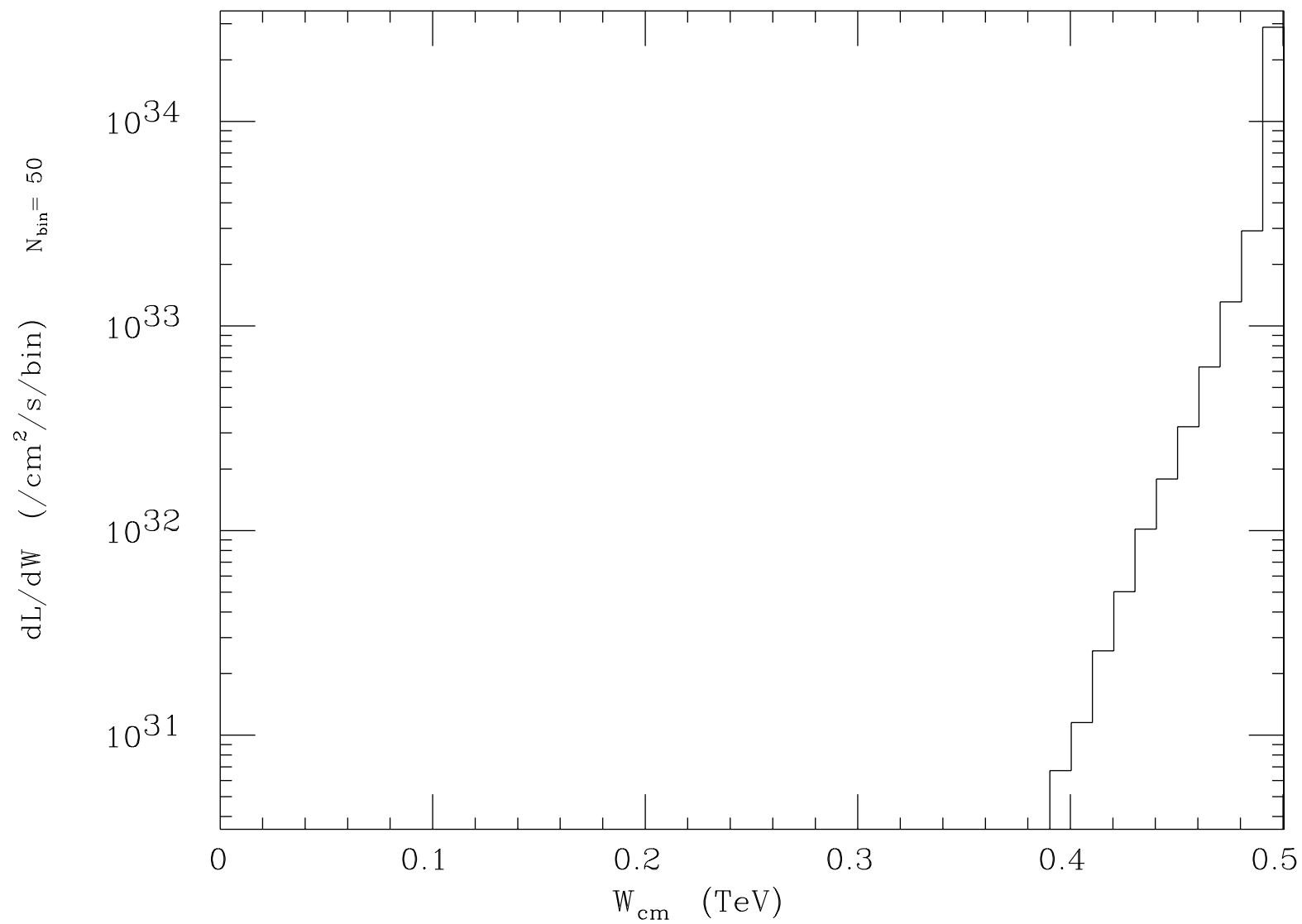


# Incoherent Pair Angle Distribution



points inside	3025
points outside	989

$X'$  (mrad)

Luminosity Spectrum ( $e^-, e^+$ )

Total luminosity  $3.441 \pm 0.006(\text{stat.}1\sigma)$  plotted range  $3.441 \times 10^{34}/\text{cm}^2/\text{s}$