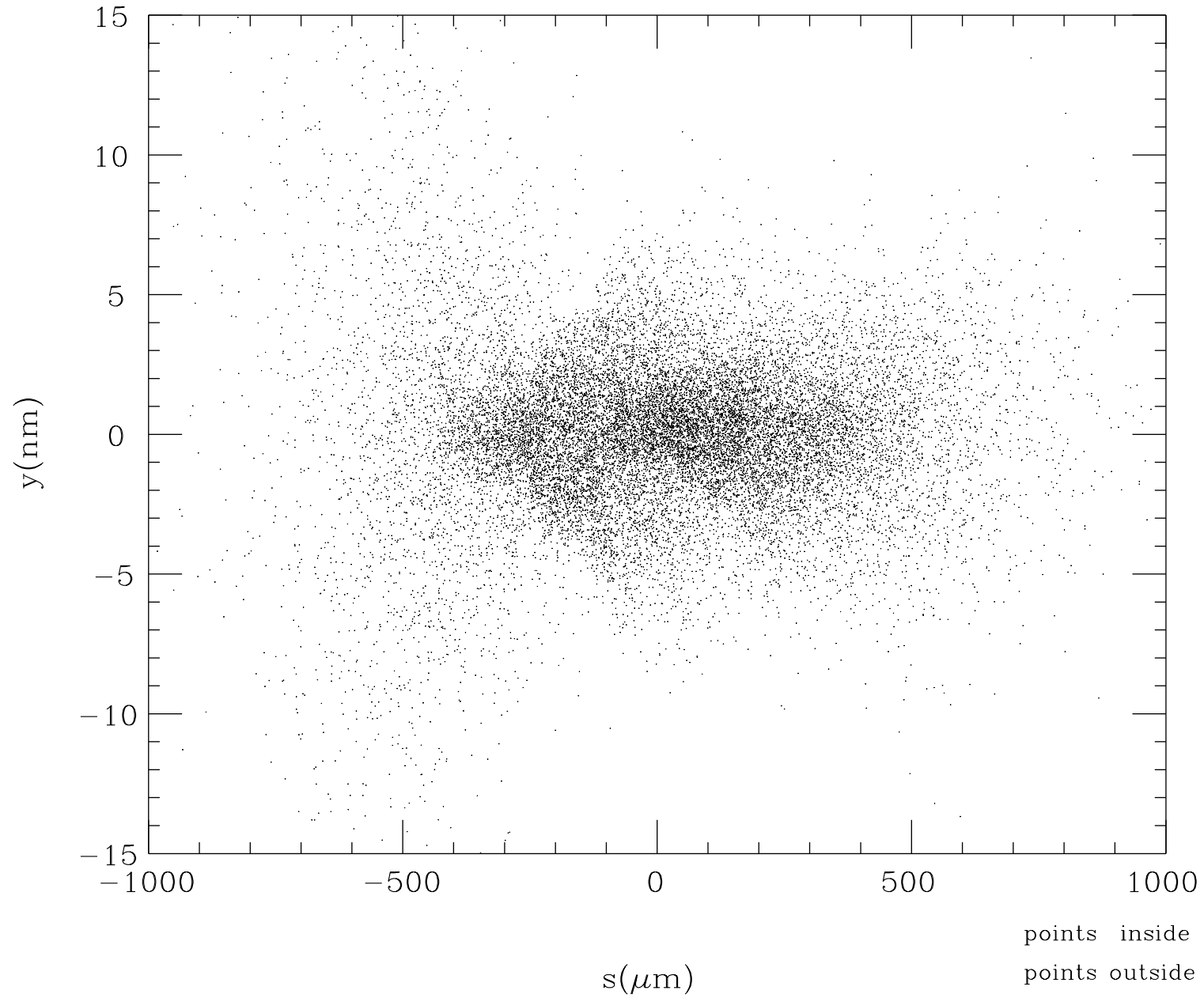
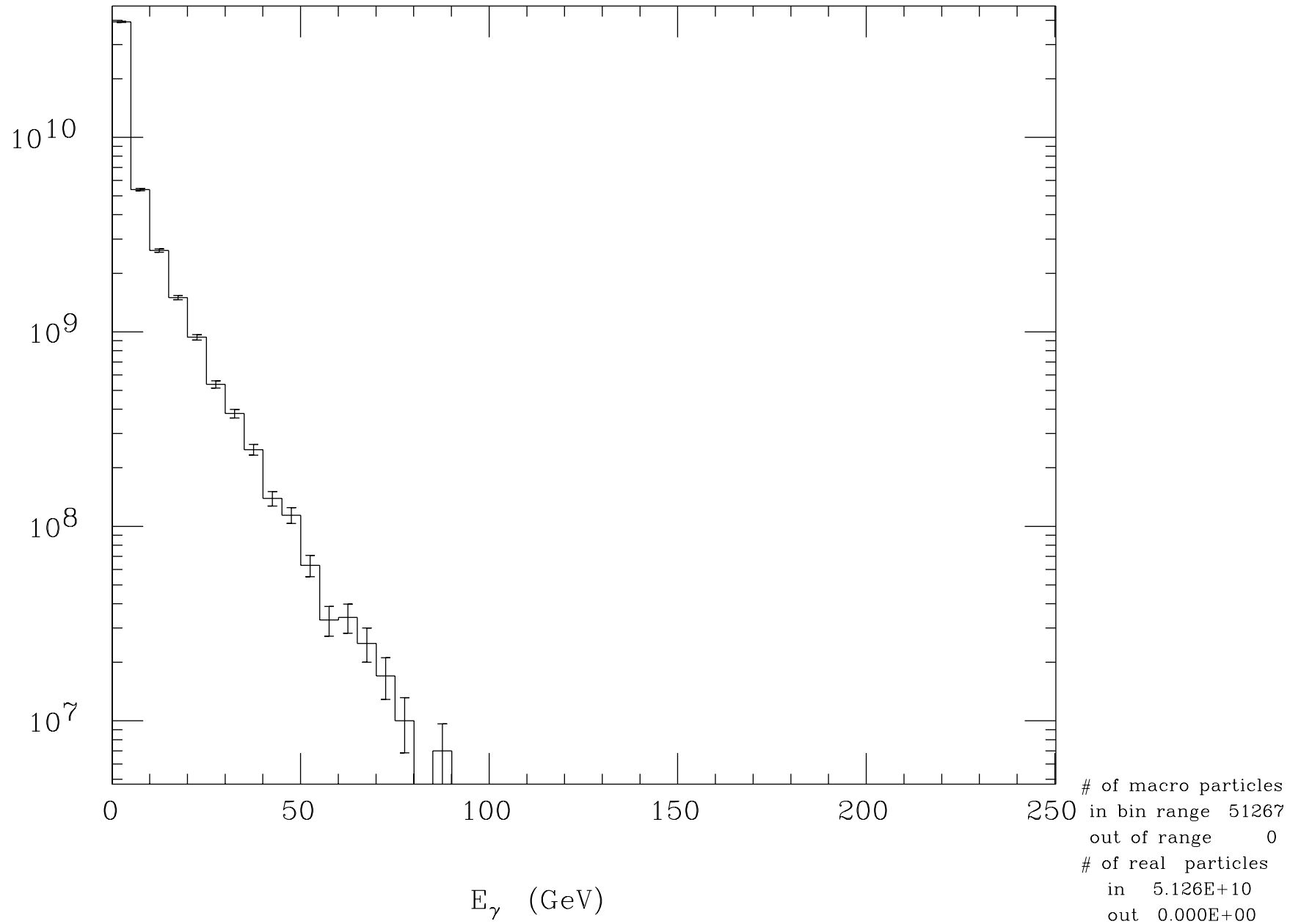


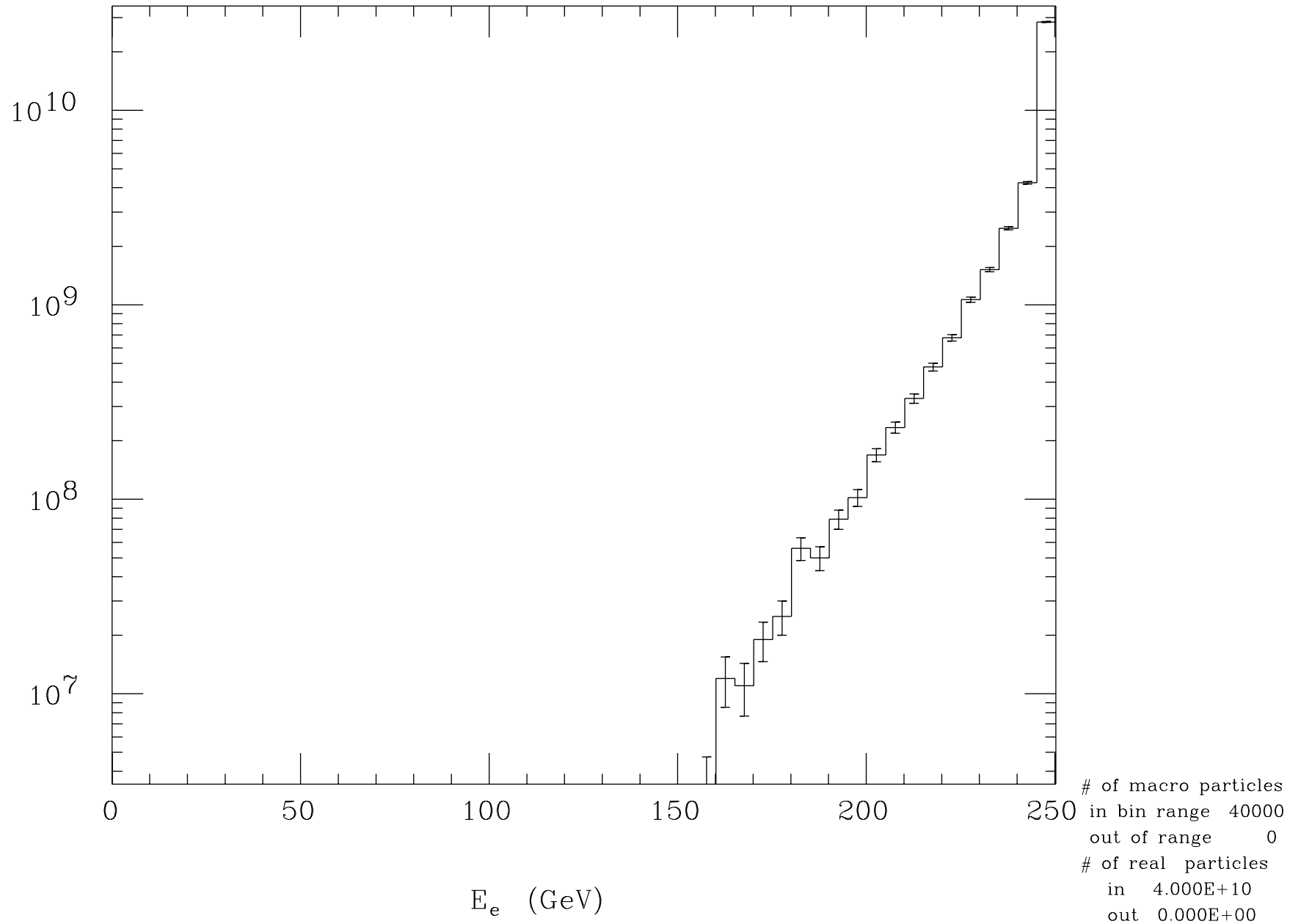
Electron Profile at t=0



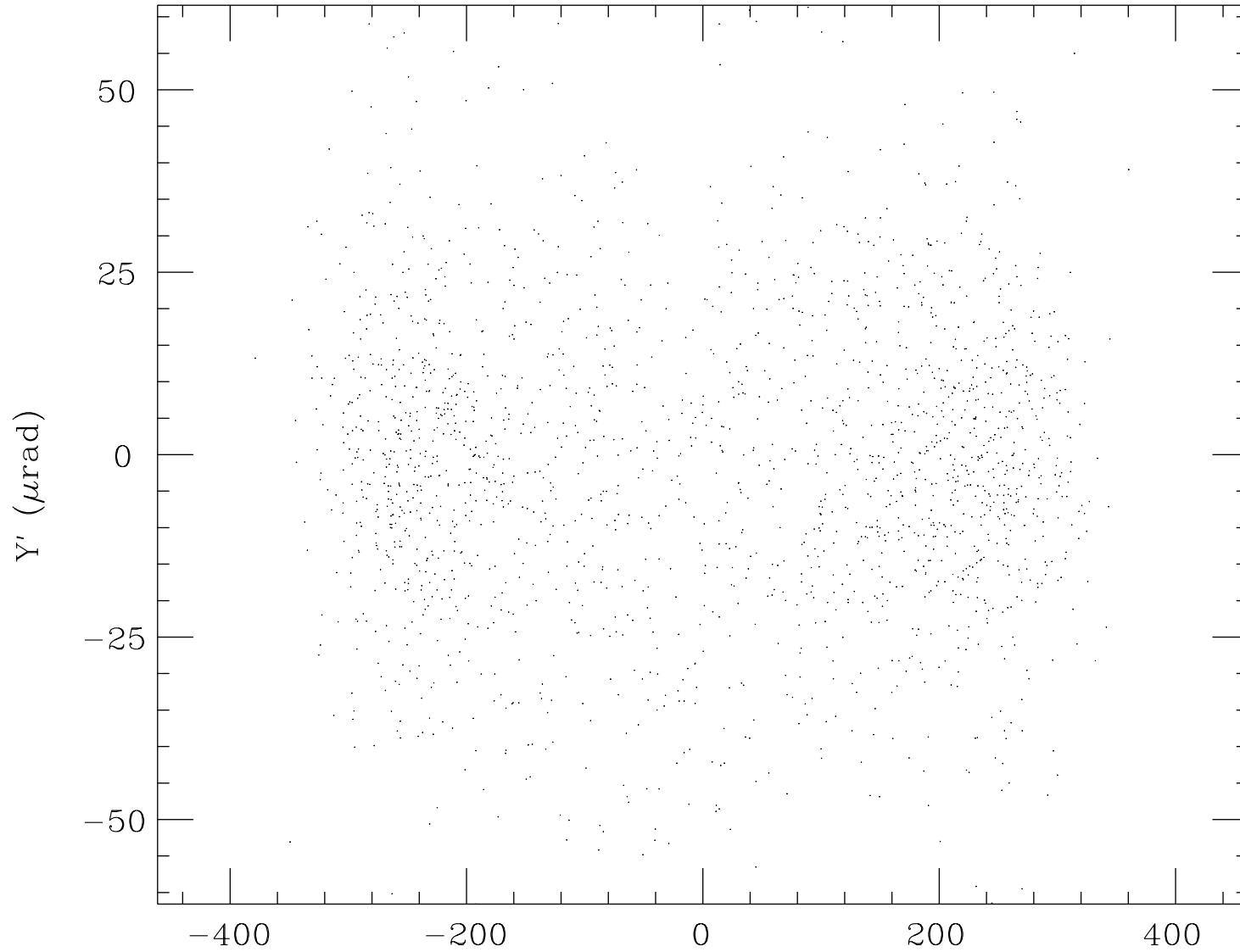
Beamstrahlung Energy Spectrum



Final Electron Energy Spectrum



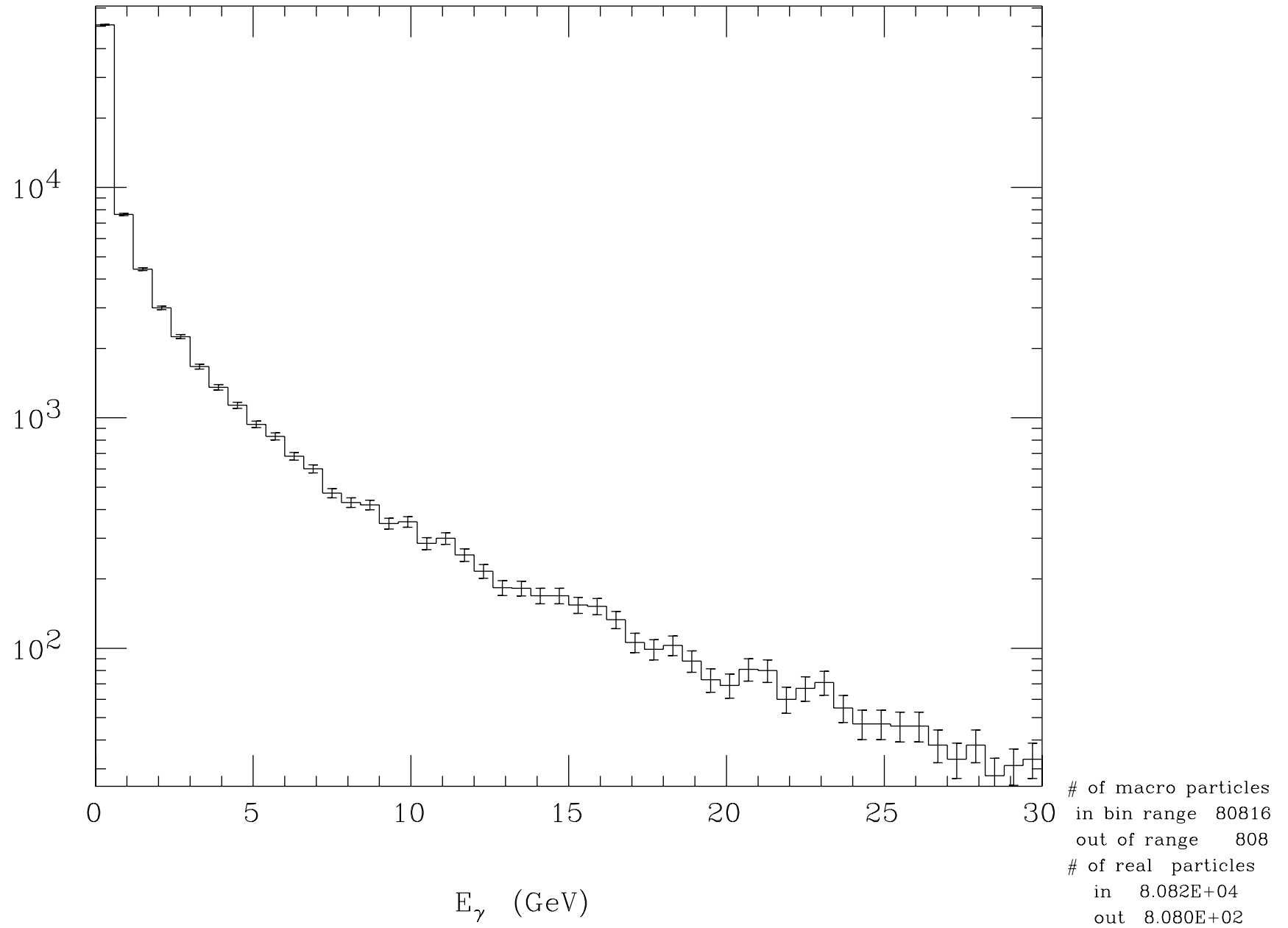
Final Electron Angle Distribution



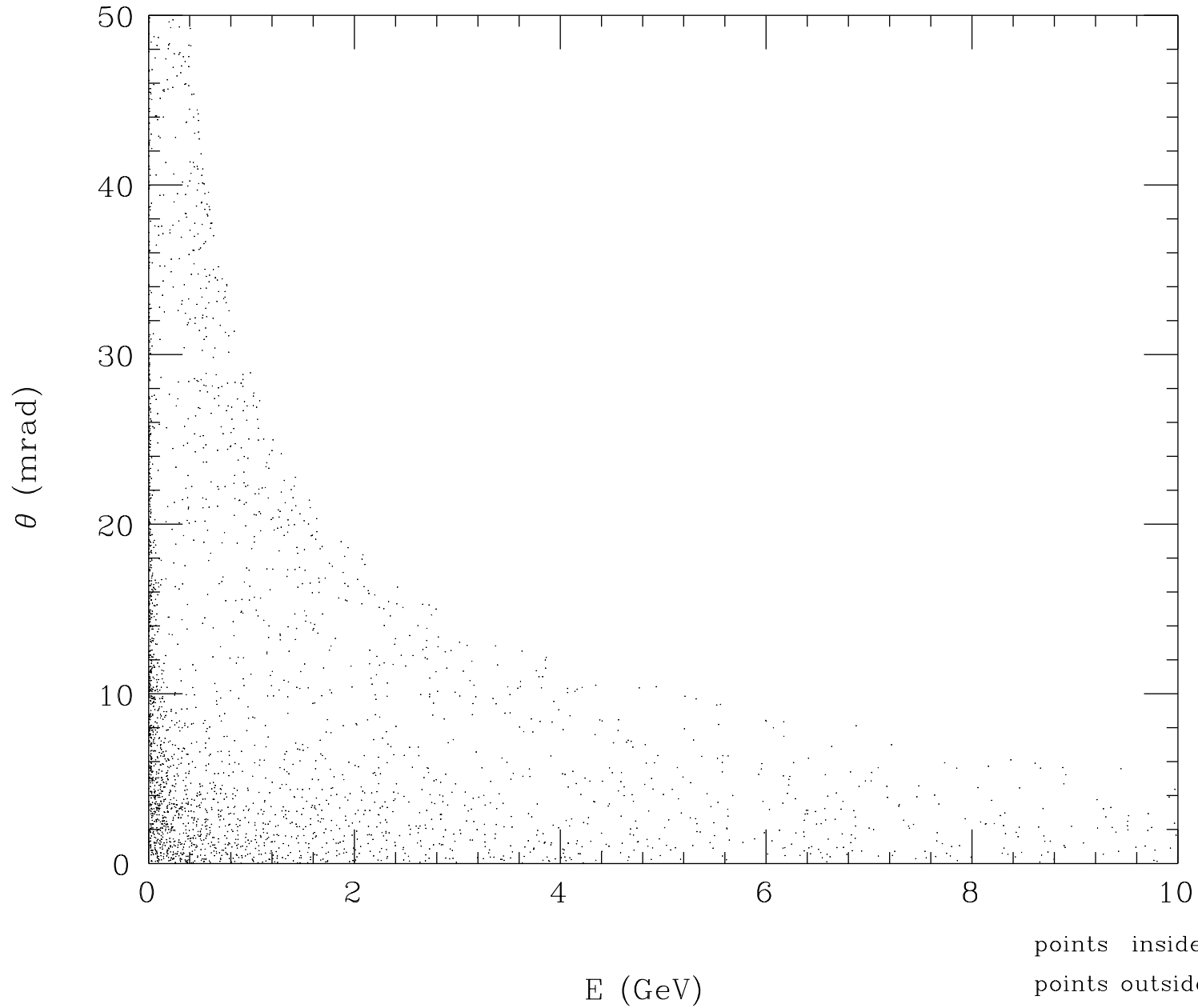
points inside	1906
points outside	30

$X' (\mu\text{rad})$

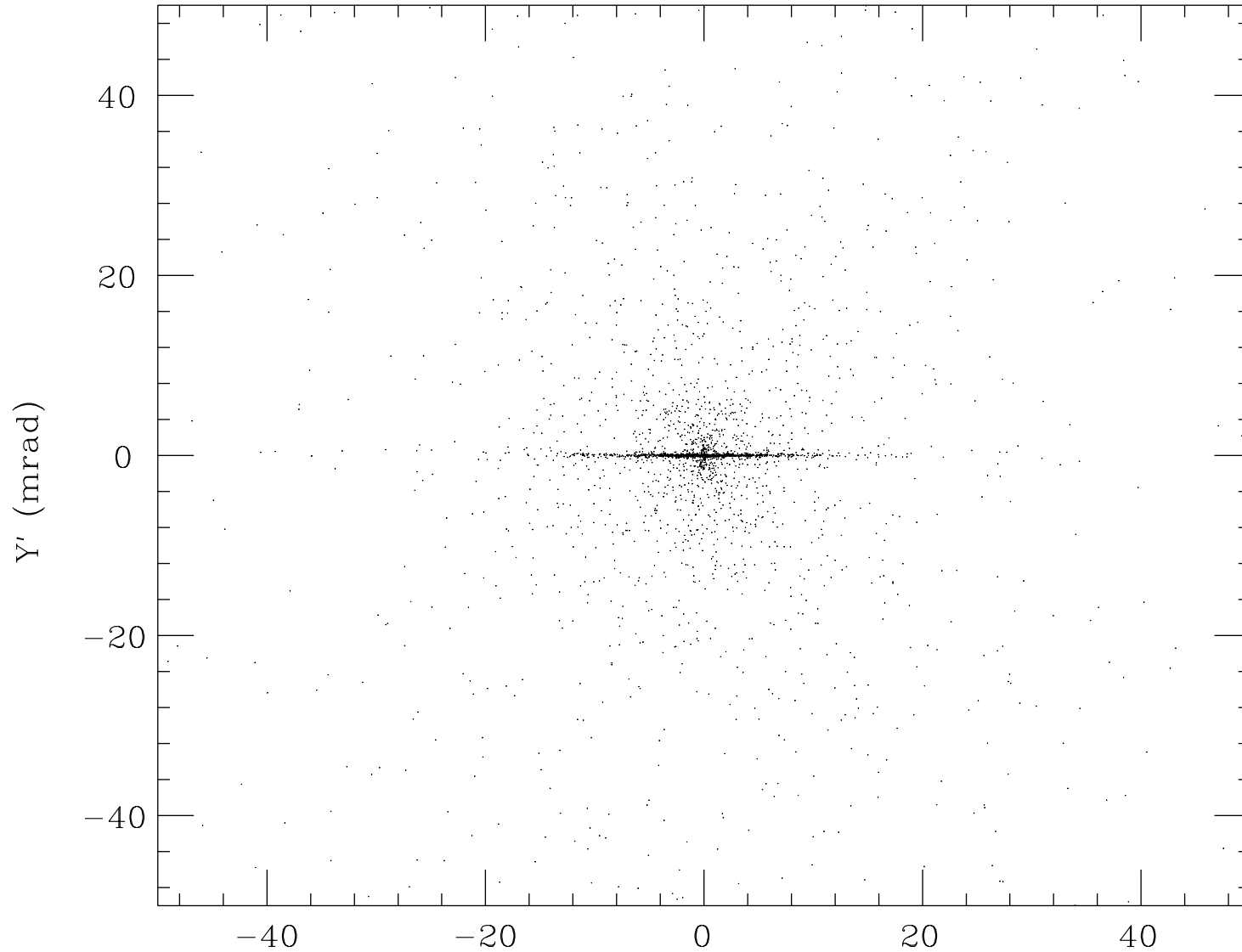
Incoherent Pair Energy Spectrum



Incoherent Pair Energy-Angle Distribution

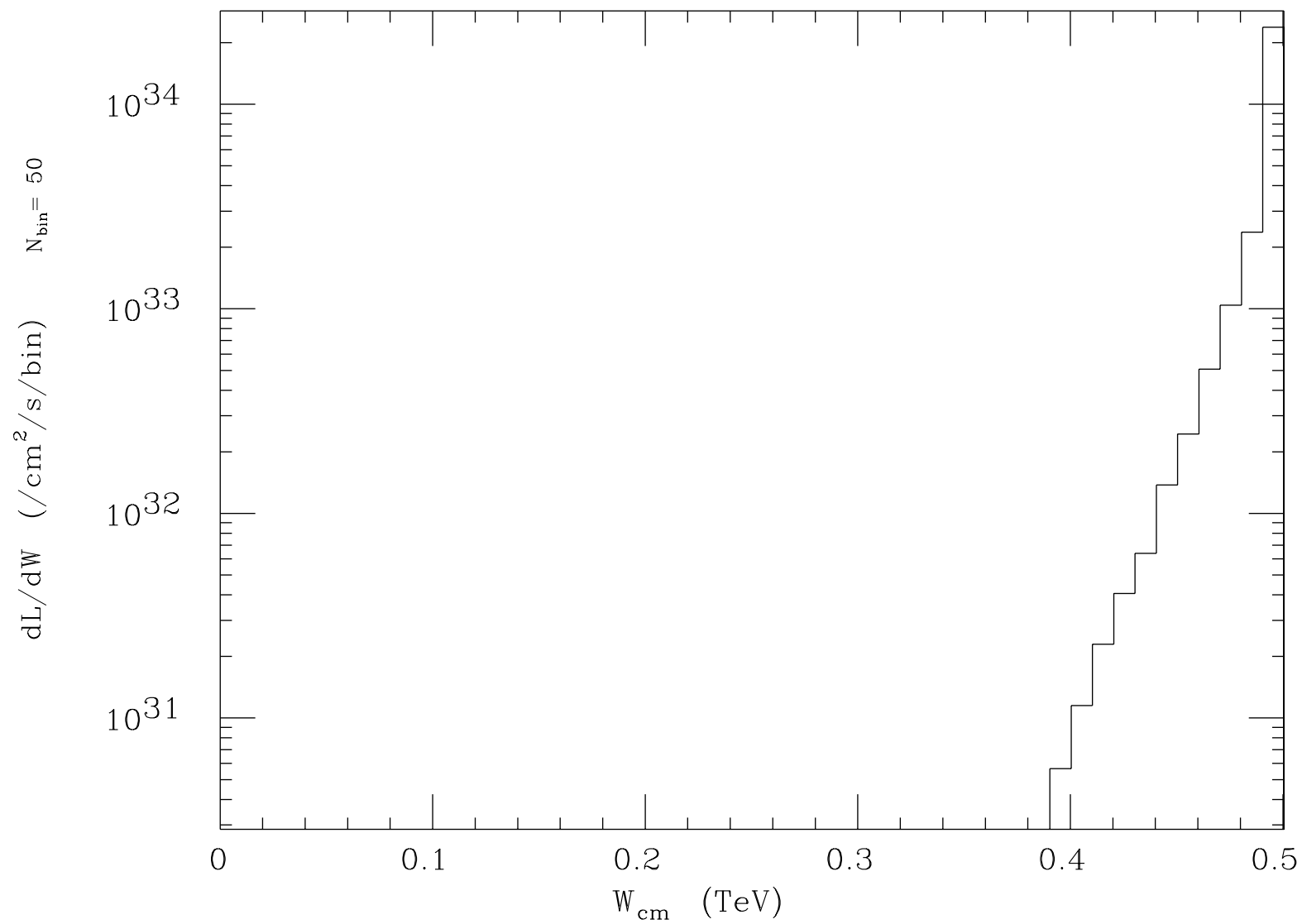


Incoherent Pair Angle Distribution



points inside	2980
points outside	1010

X' (mrad)

Luminosity Spectrum (e^-, e^+)

Total luminosity $2.823 \pm 0.005(\text{stat.}1\sigma)$ plotted range $2.823 \times 10^{34}/\text{cm}^2/\text{s}$