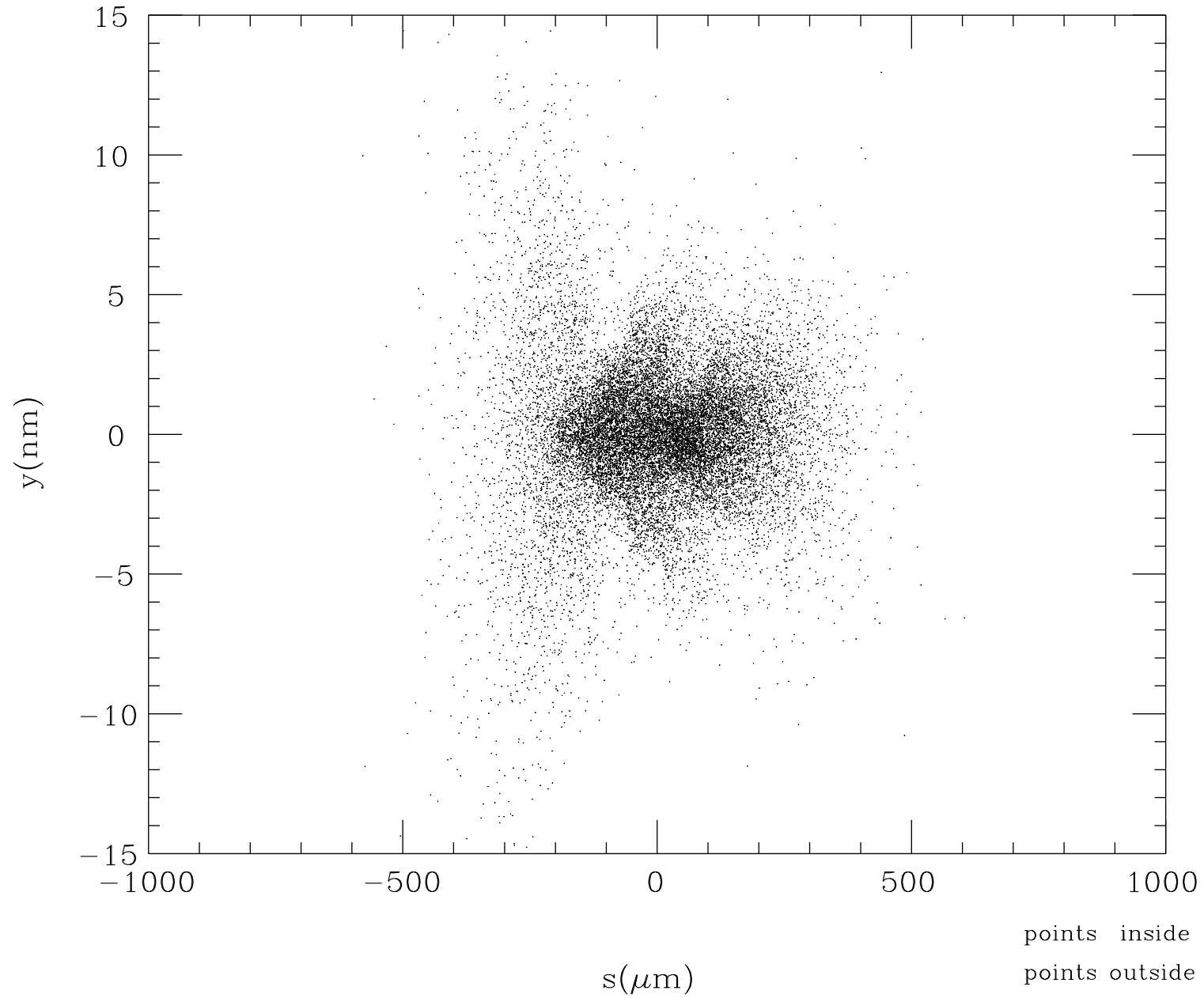
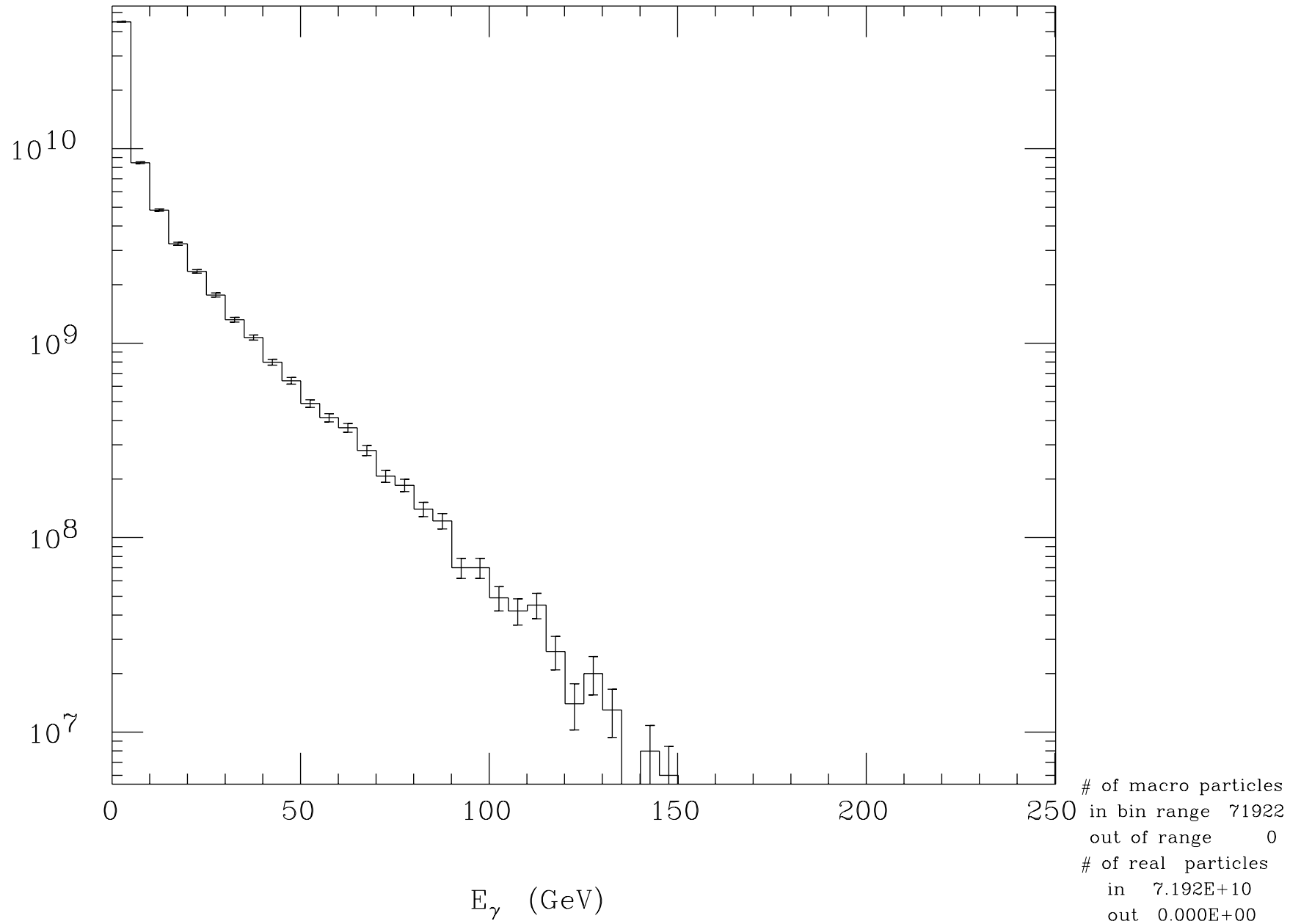


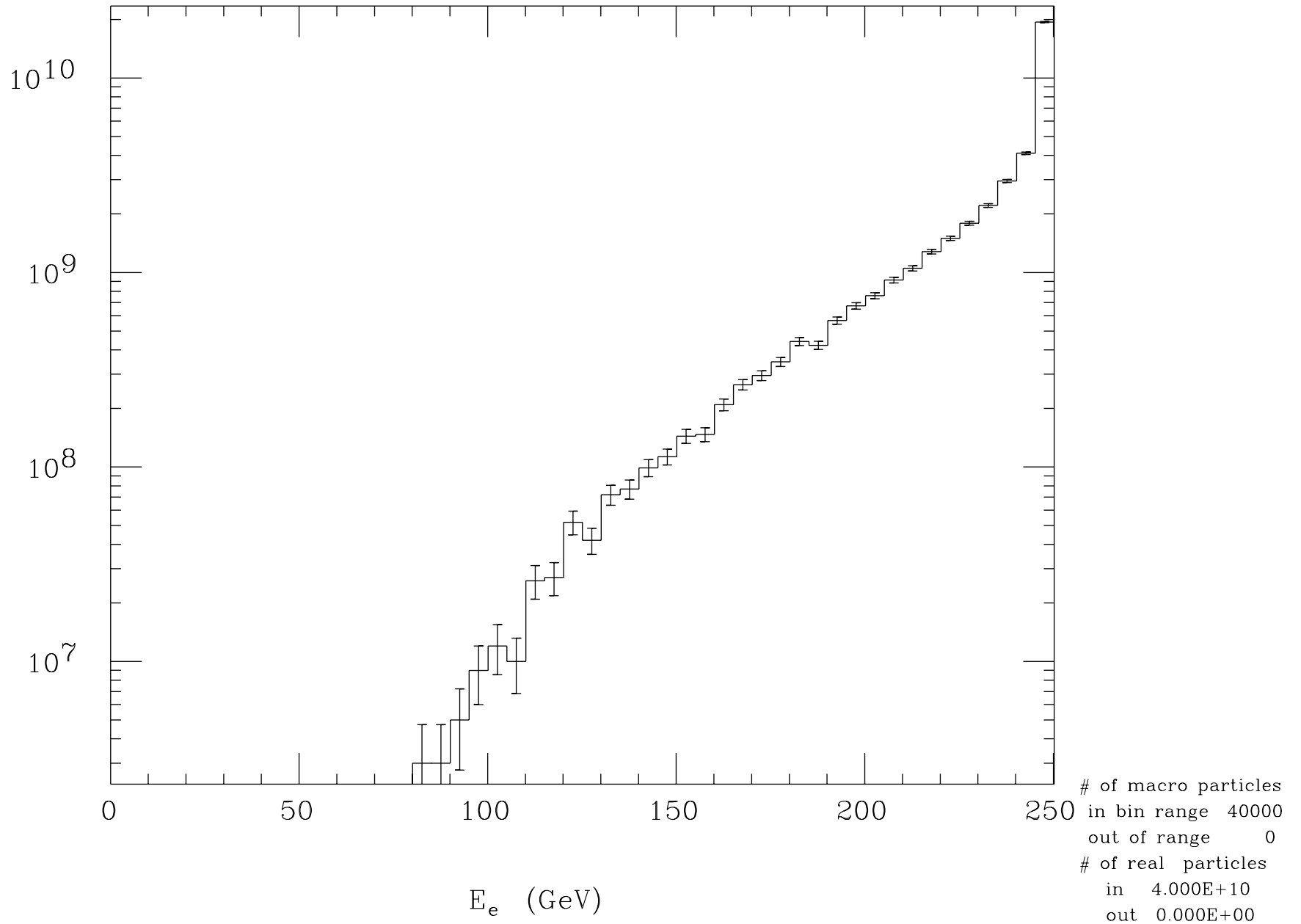
Electron Profile at t=0



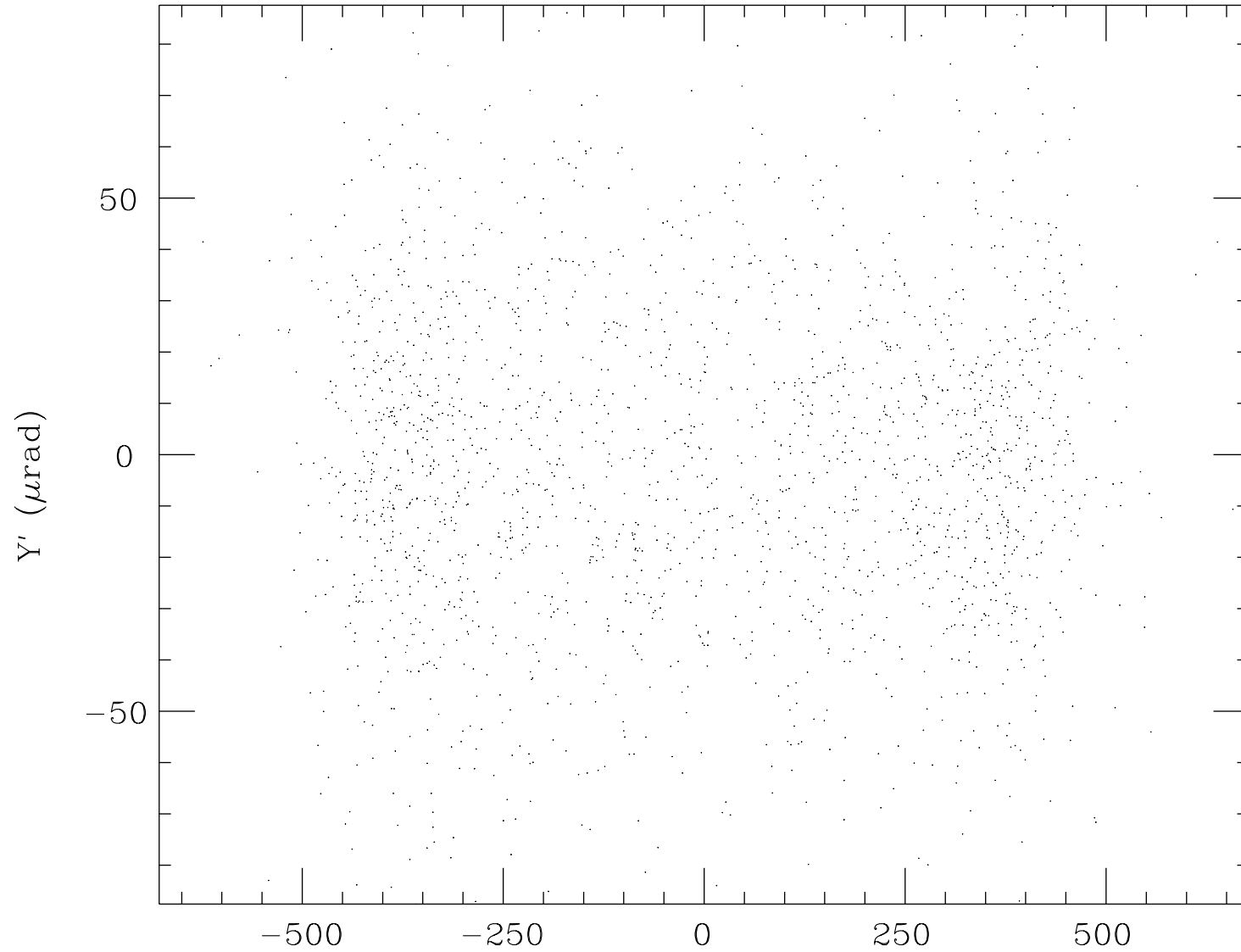
Beamstrahlung Energy Spectrum



Final Electron Energy Spectrum



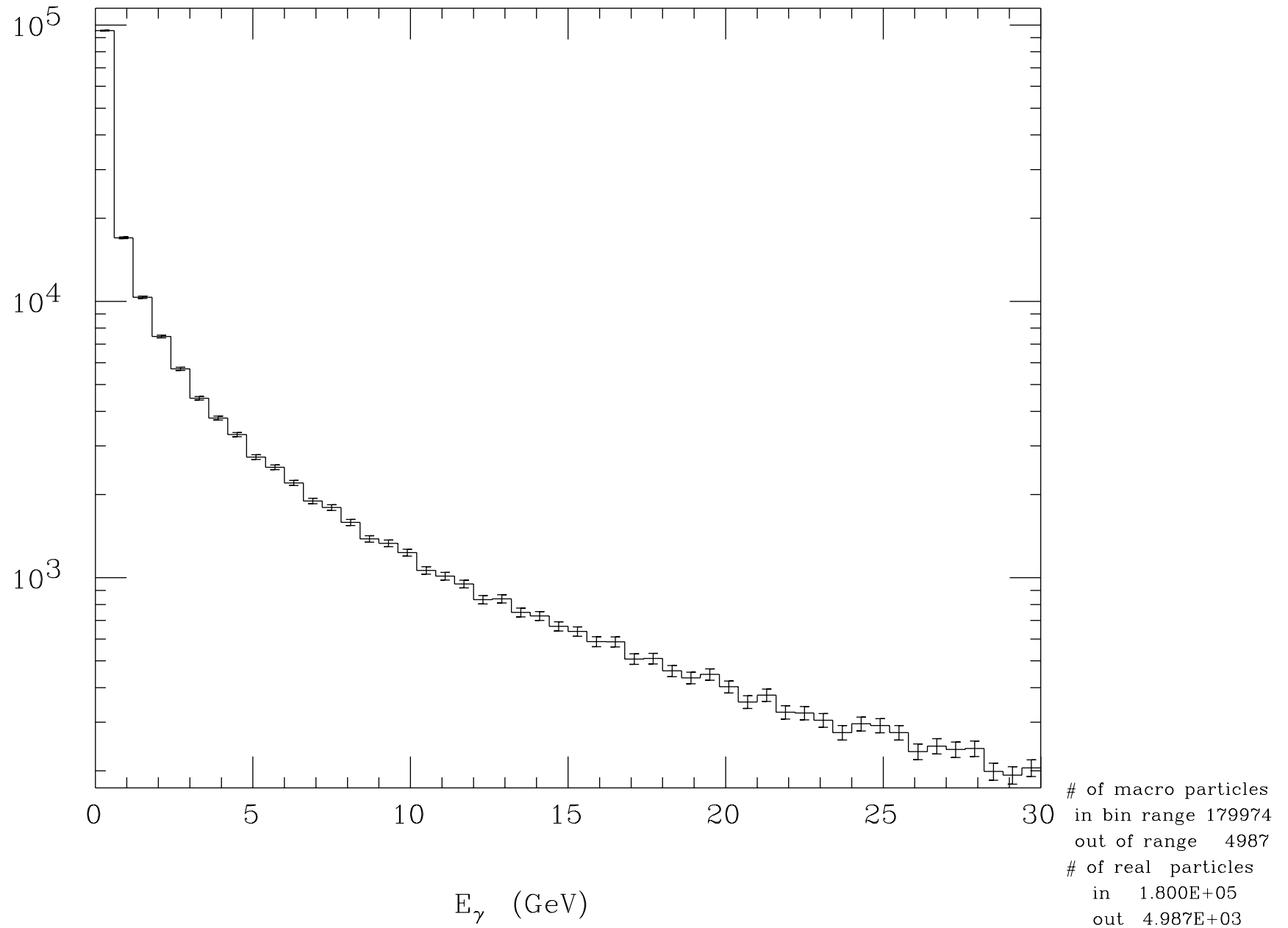
Final Electron Angle Distribution



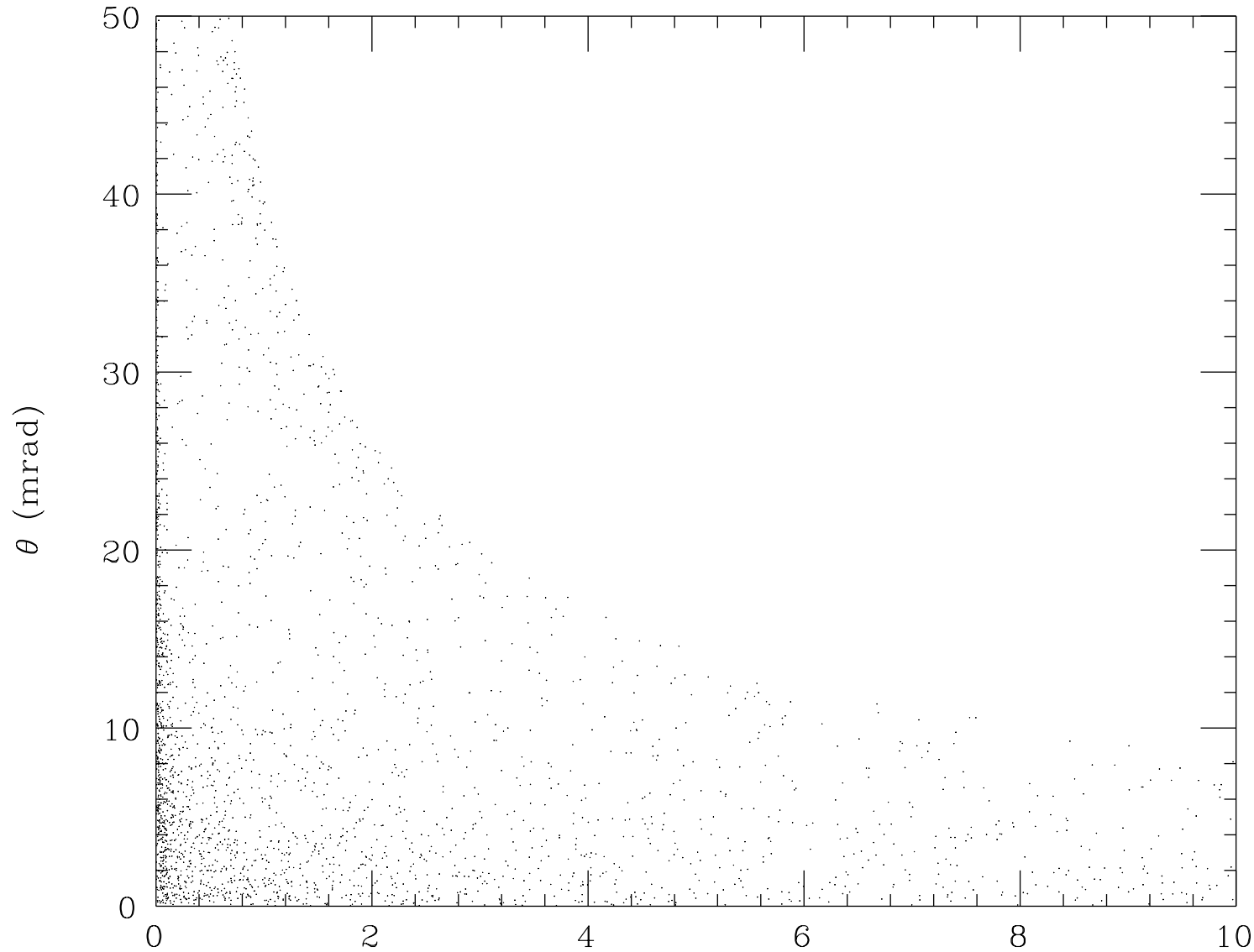
points inside	1981
points outside	51

X' (μrad)

Incoherent Pair Energy Spectrum



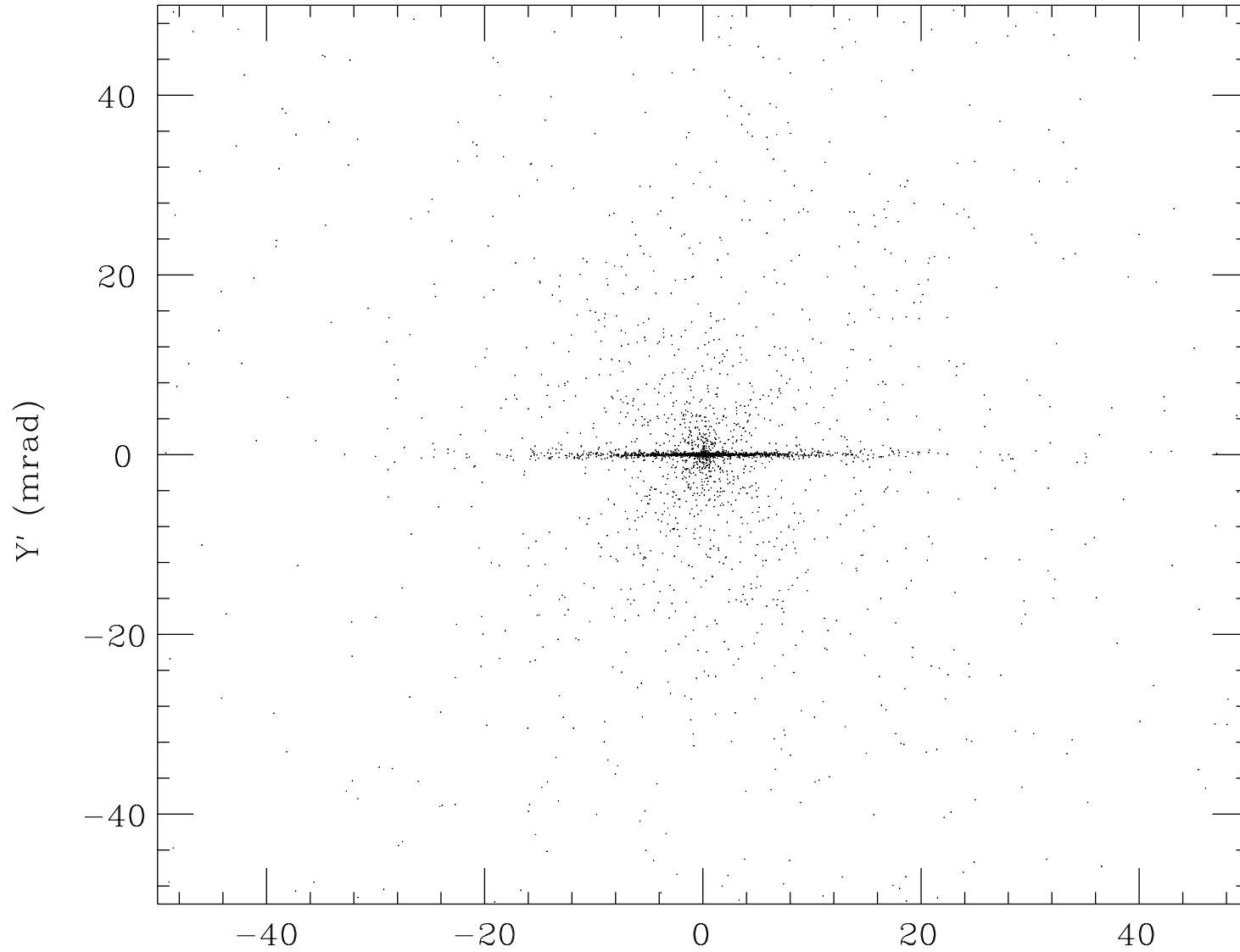
Incoherent Pair Energy-Angle Distribution



points inside	2552
points outside	1462

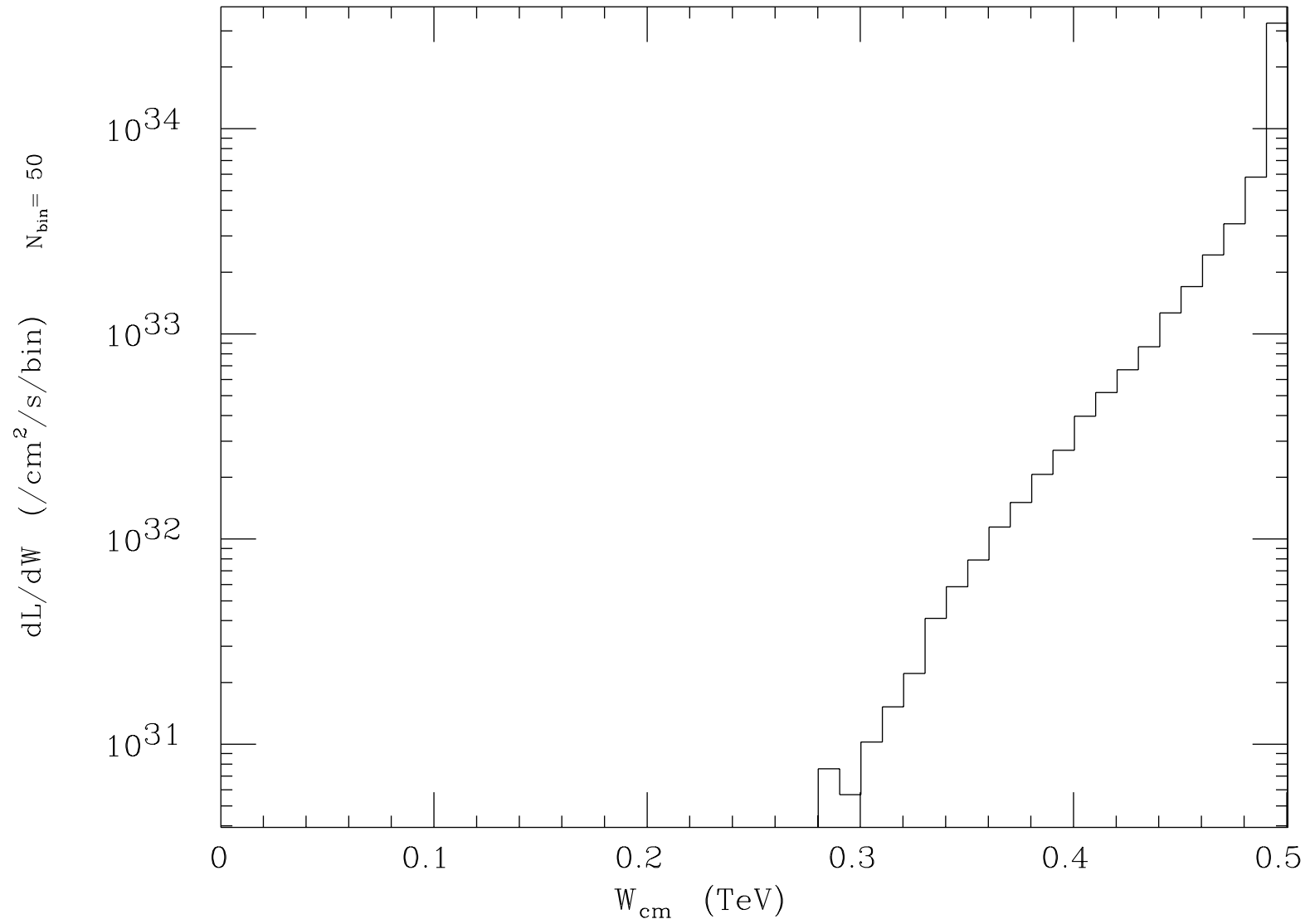
E (GeV)

Incoherent Pair Angle Distribution



points inside	3065
points outside	922

X' (mrad)

Luminosity Spectrum (e^-, e^+)

Total luminosity $5.079 \pm 0.008(\text{stat. } 1\sigma)$ plotted range $5.079 \times 10^{34} / \text{cm}^2 / \text{s}$