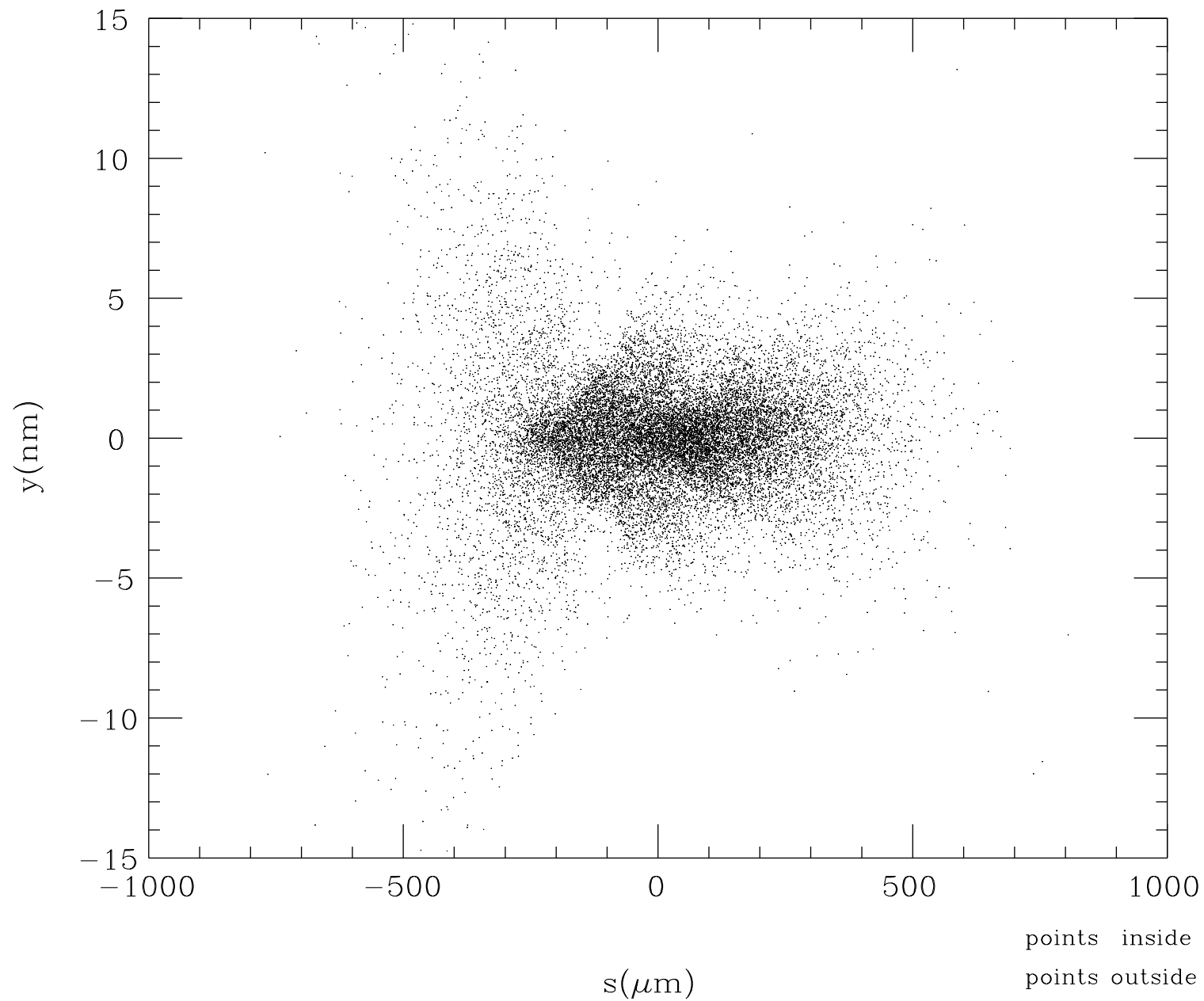
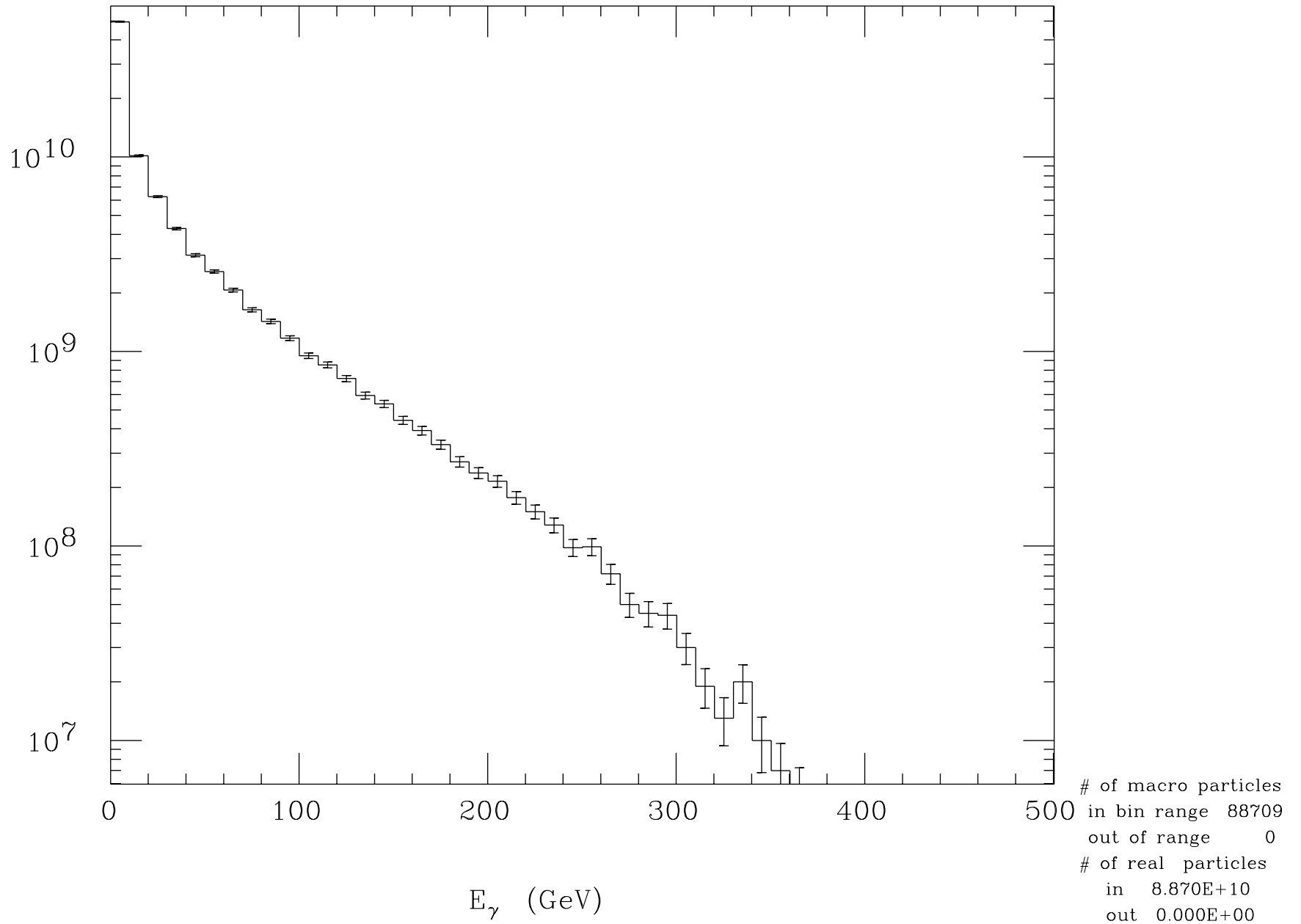


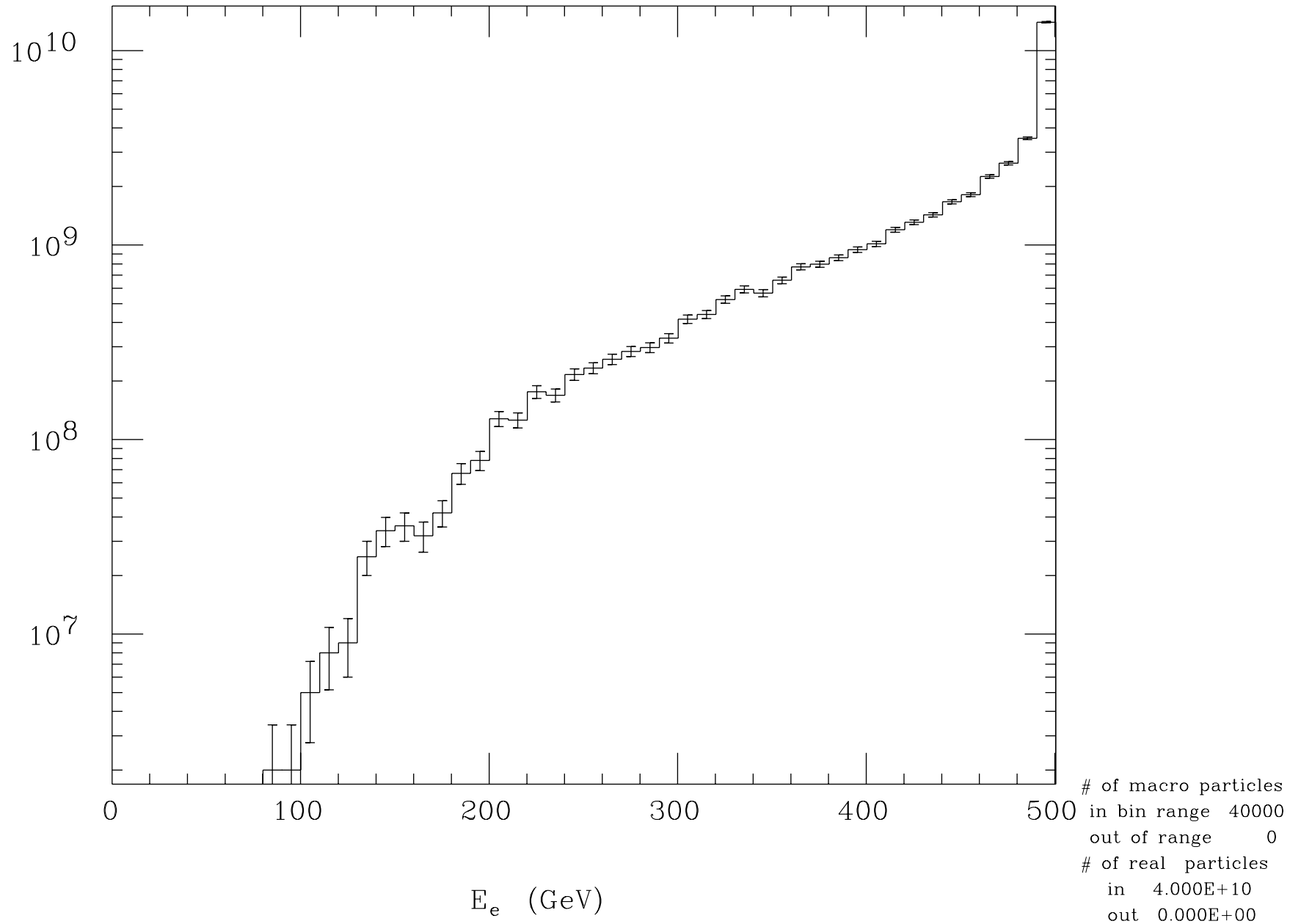
# Electron Profile at t=0



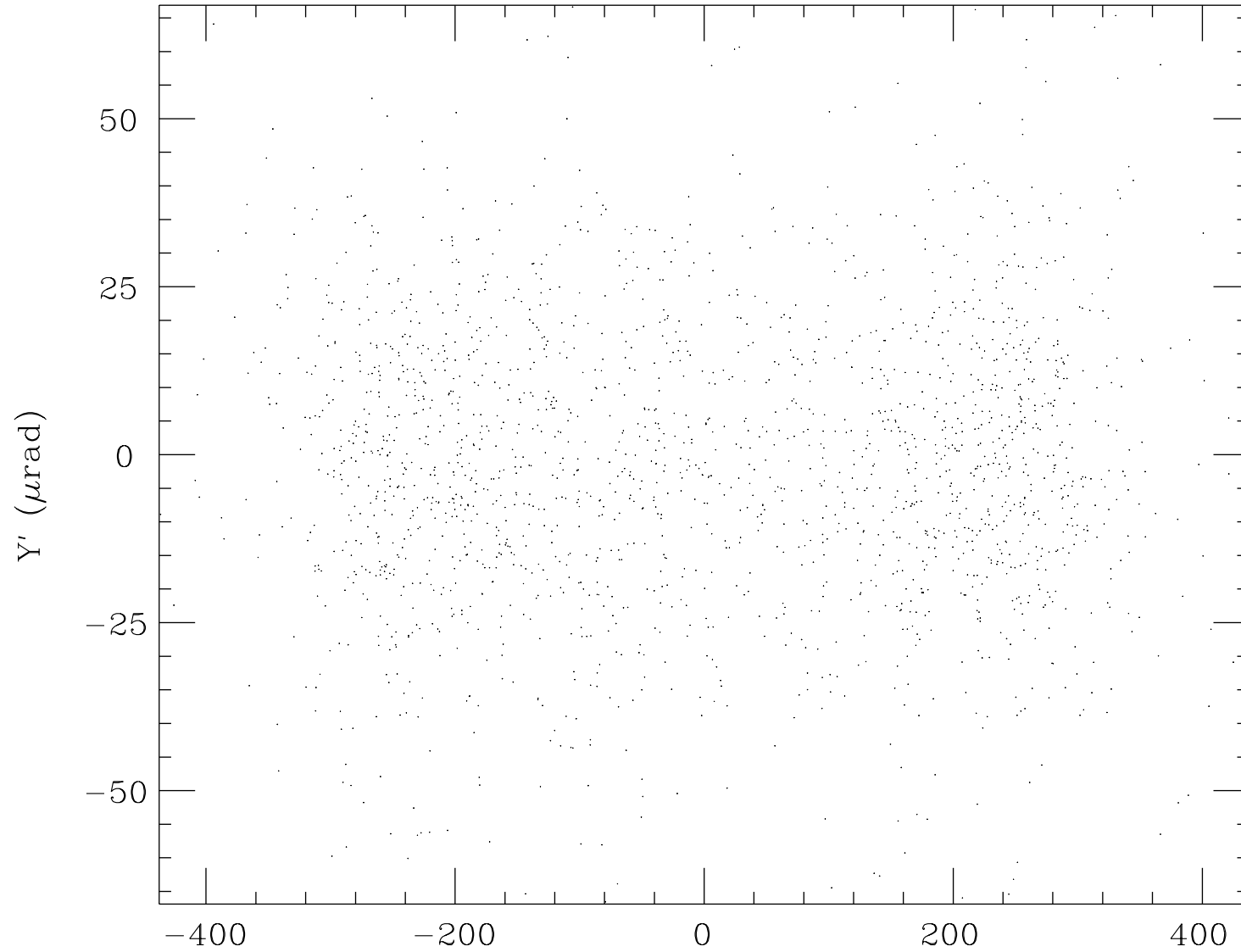
# Beamstrahlung Energy Spectrum



## Final Electron Energy Spectrum



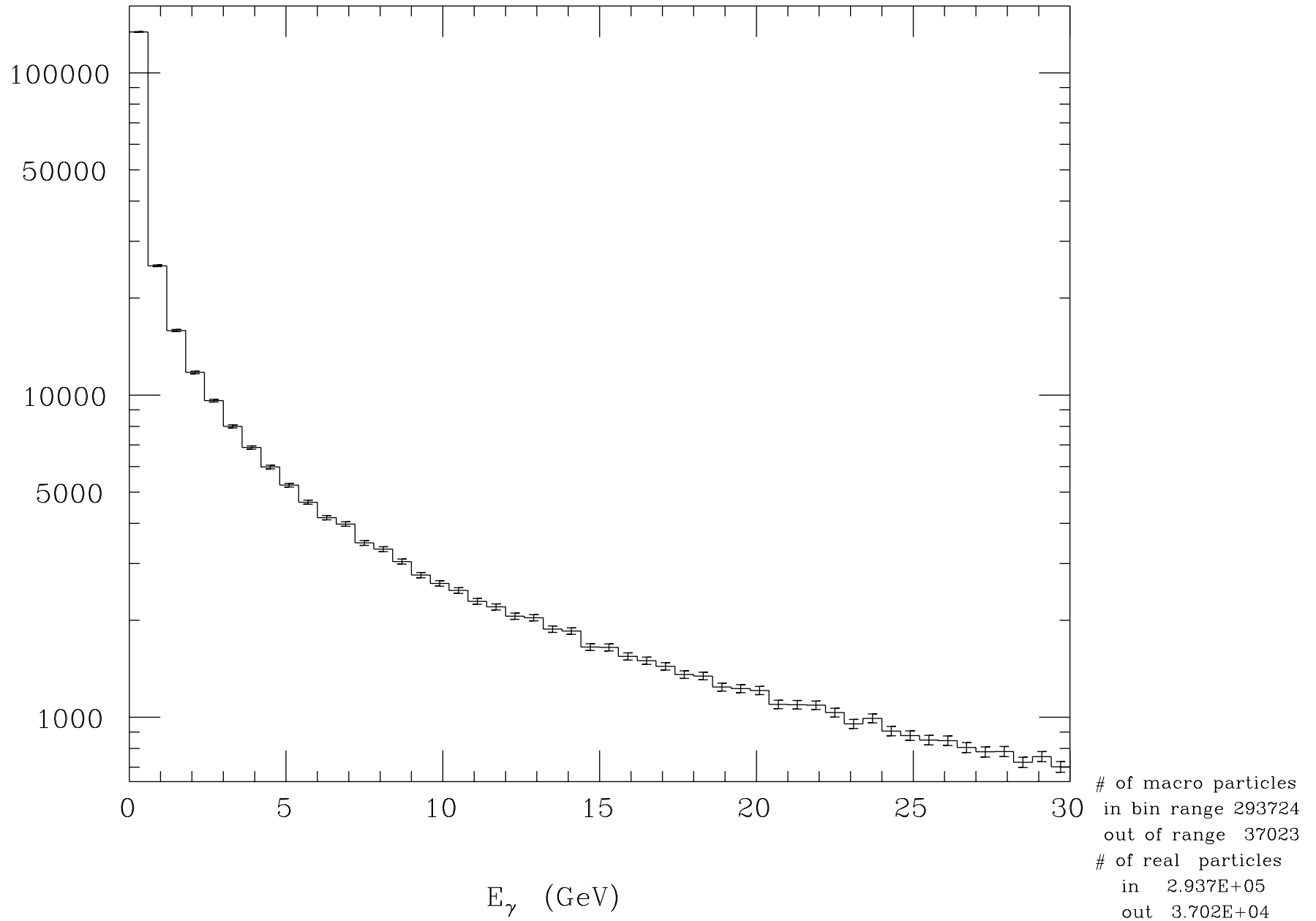
# Final Electron Angle Distribution



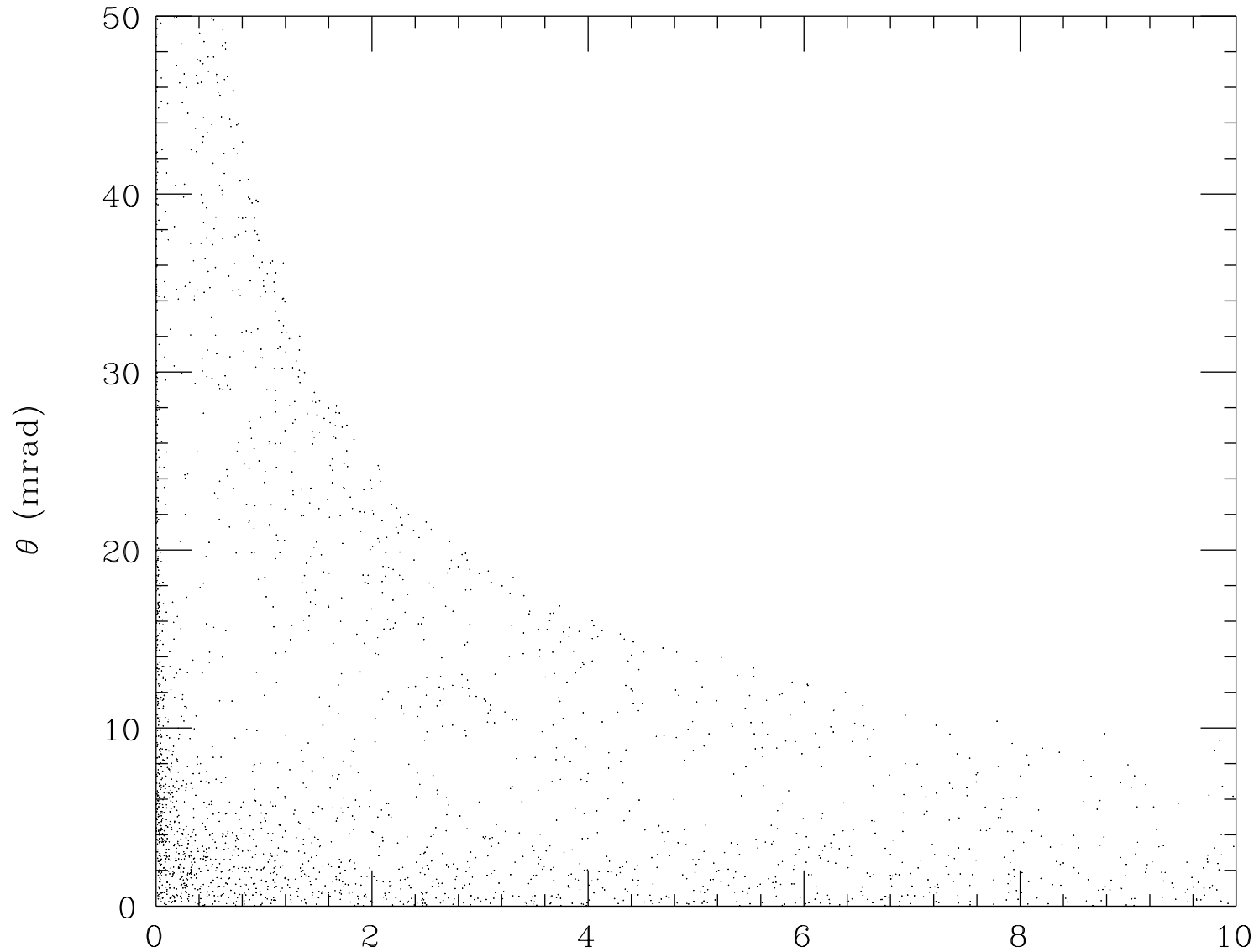
points inside	1947
points outside	41

$X' (\mu\text{rad})$

## Incoherent Pair Energy Spectrum



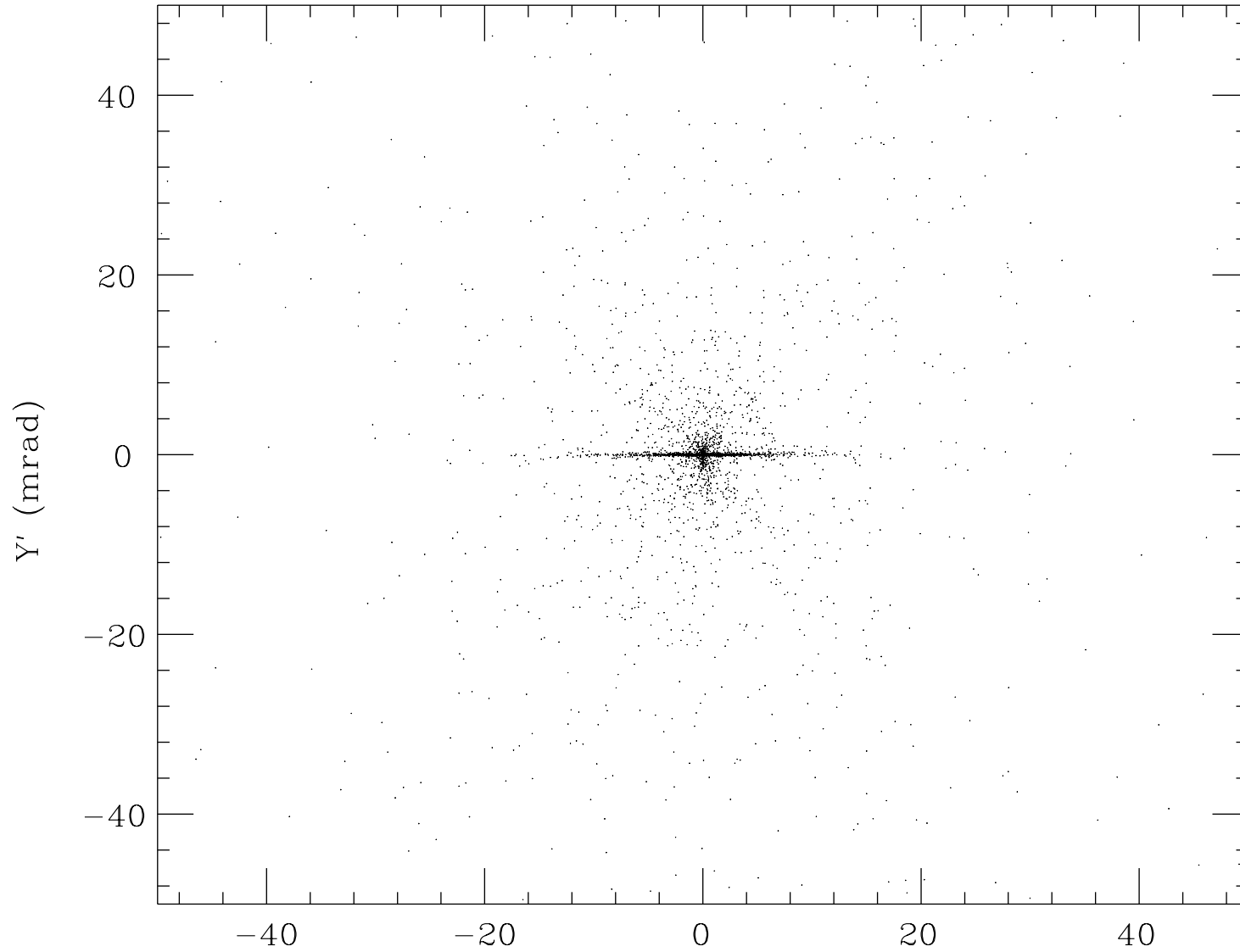
# Incoherent Pair Energy-Angle Distribution



points inside	2283
points outside	1680

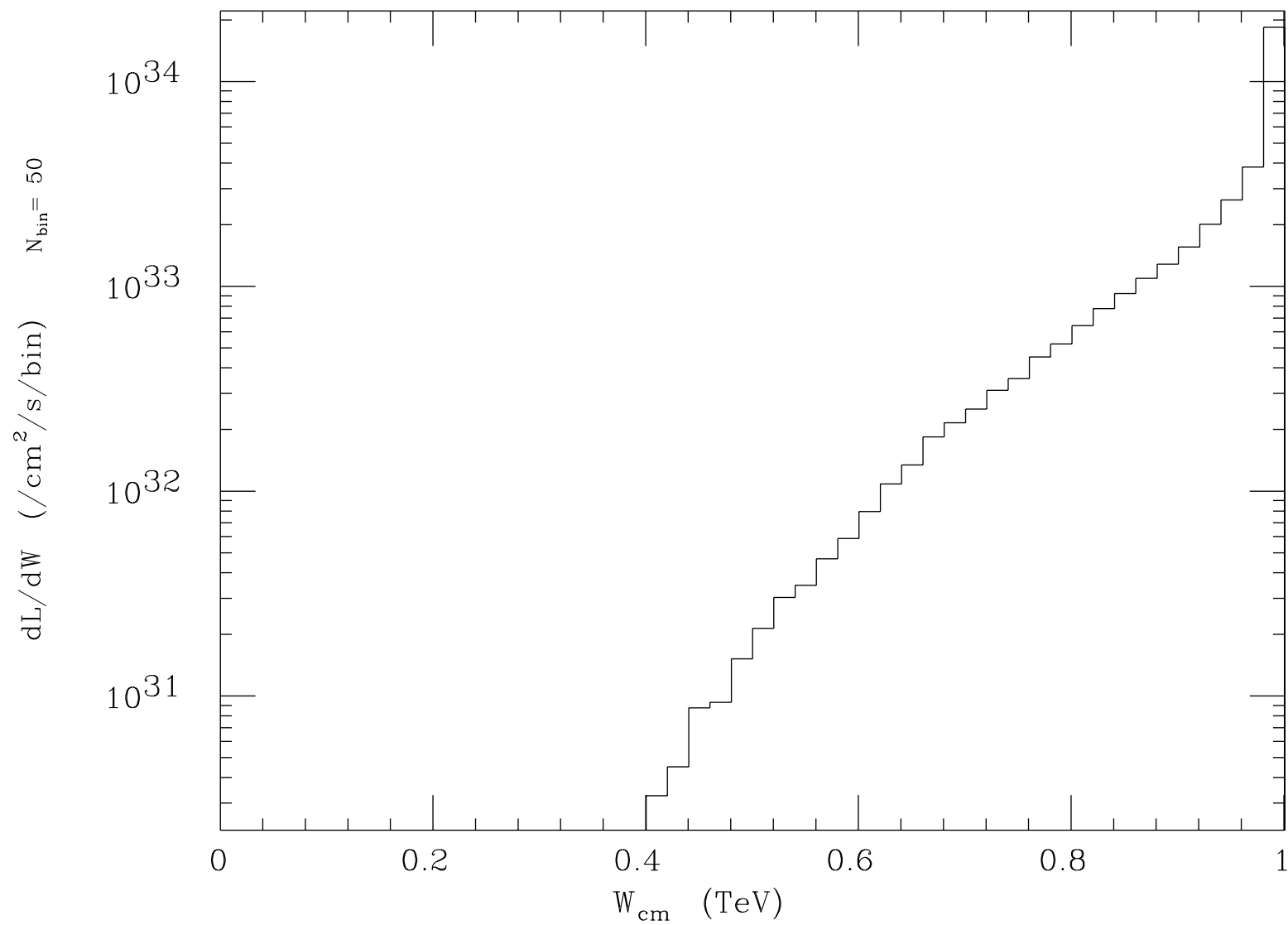
E (GeV)

# Incoherent Pair Angle Distribution



points inside	3240
points outside	762

$X'$  (mrad)

Luminosity Spectrum ( $e^-, e^+$ )

Total luminosity  $3.601 \pm 0.006(\text{stat.}1\sigma)$  plotted range  $3.601 \times 10^{34}/\text{cm}^2/\text{s}$