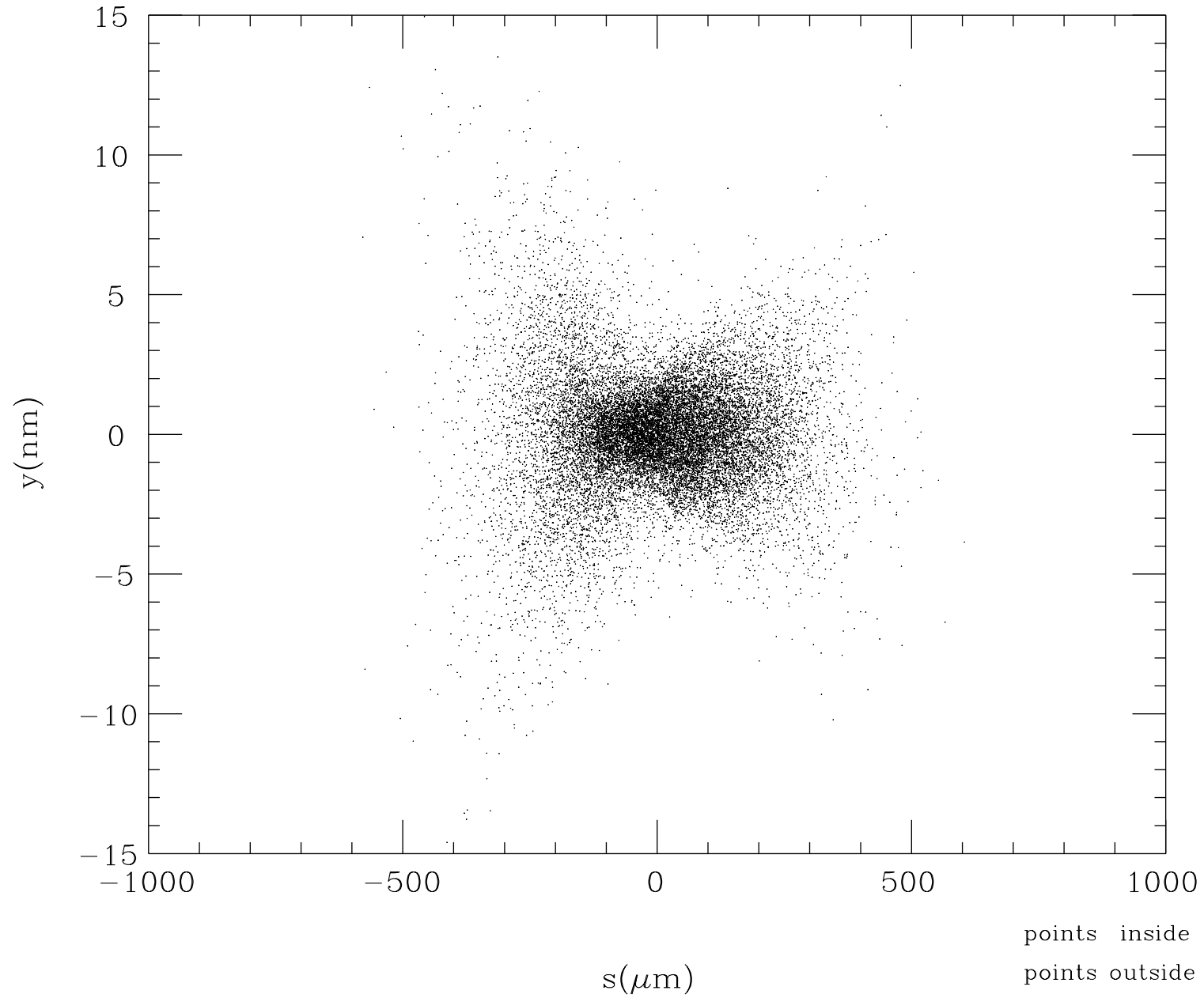
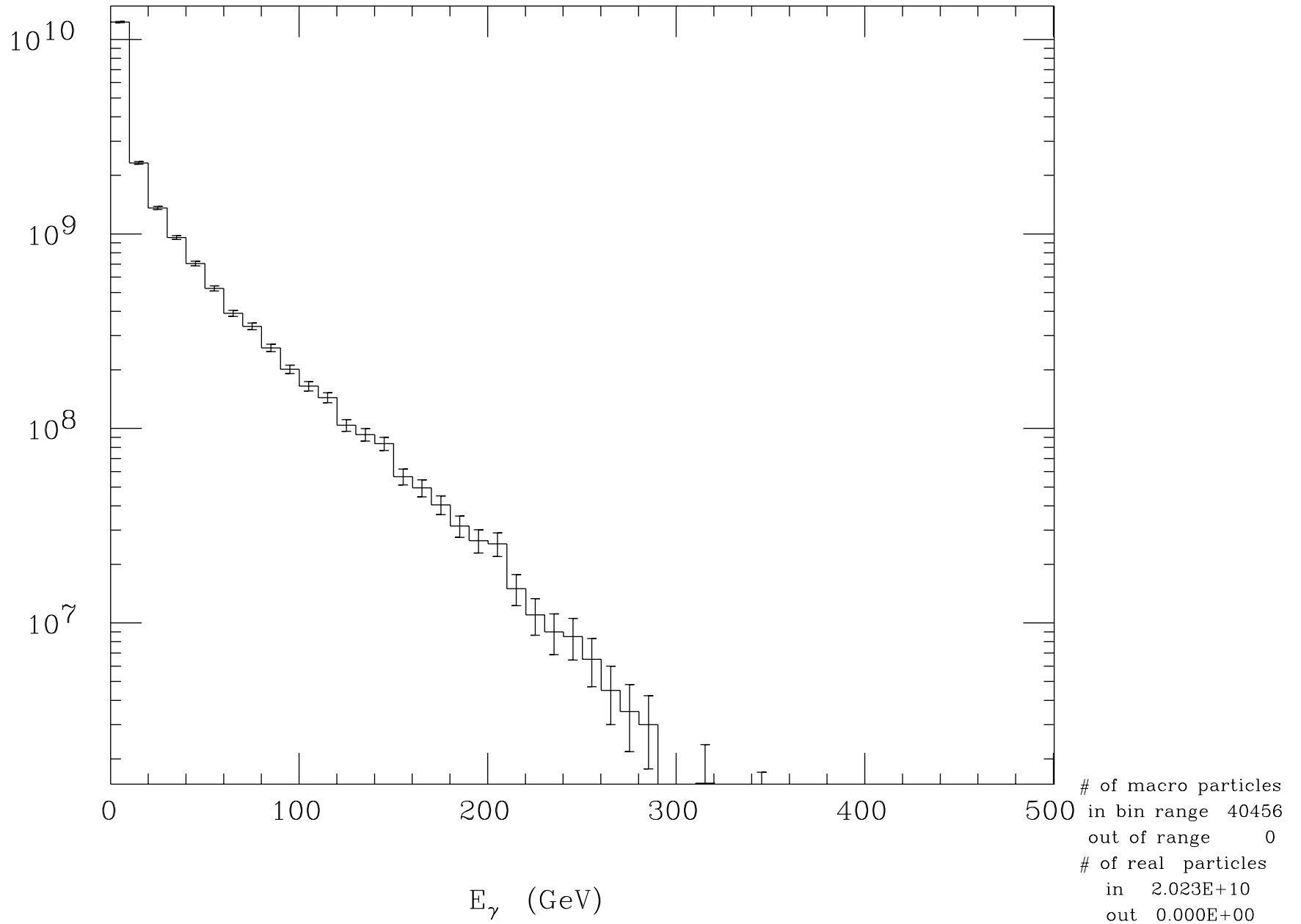


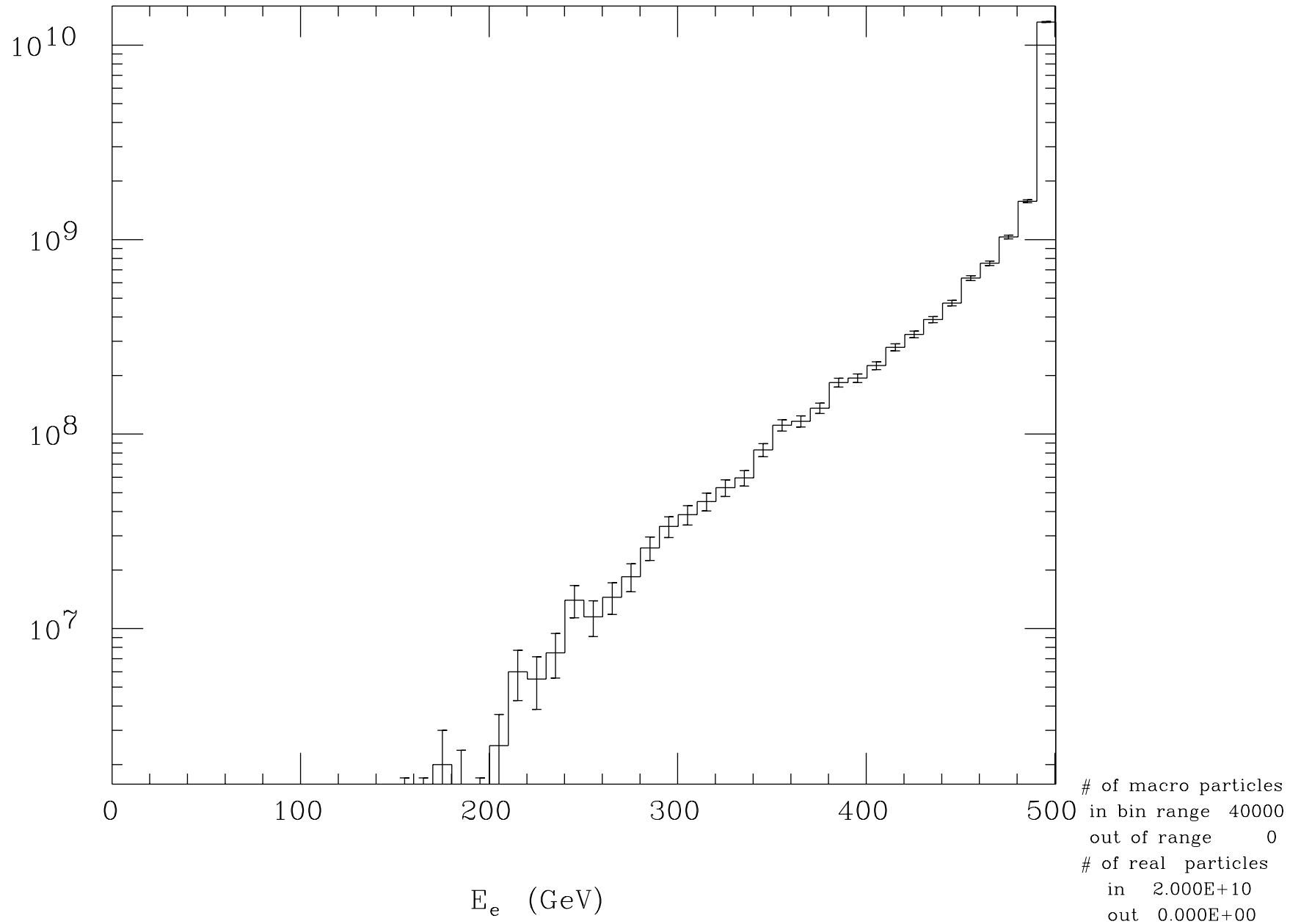
Electron Profile at t=0



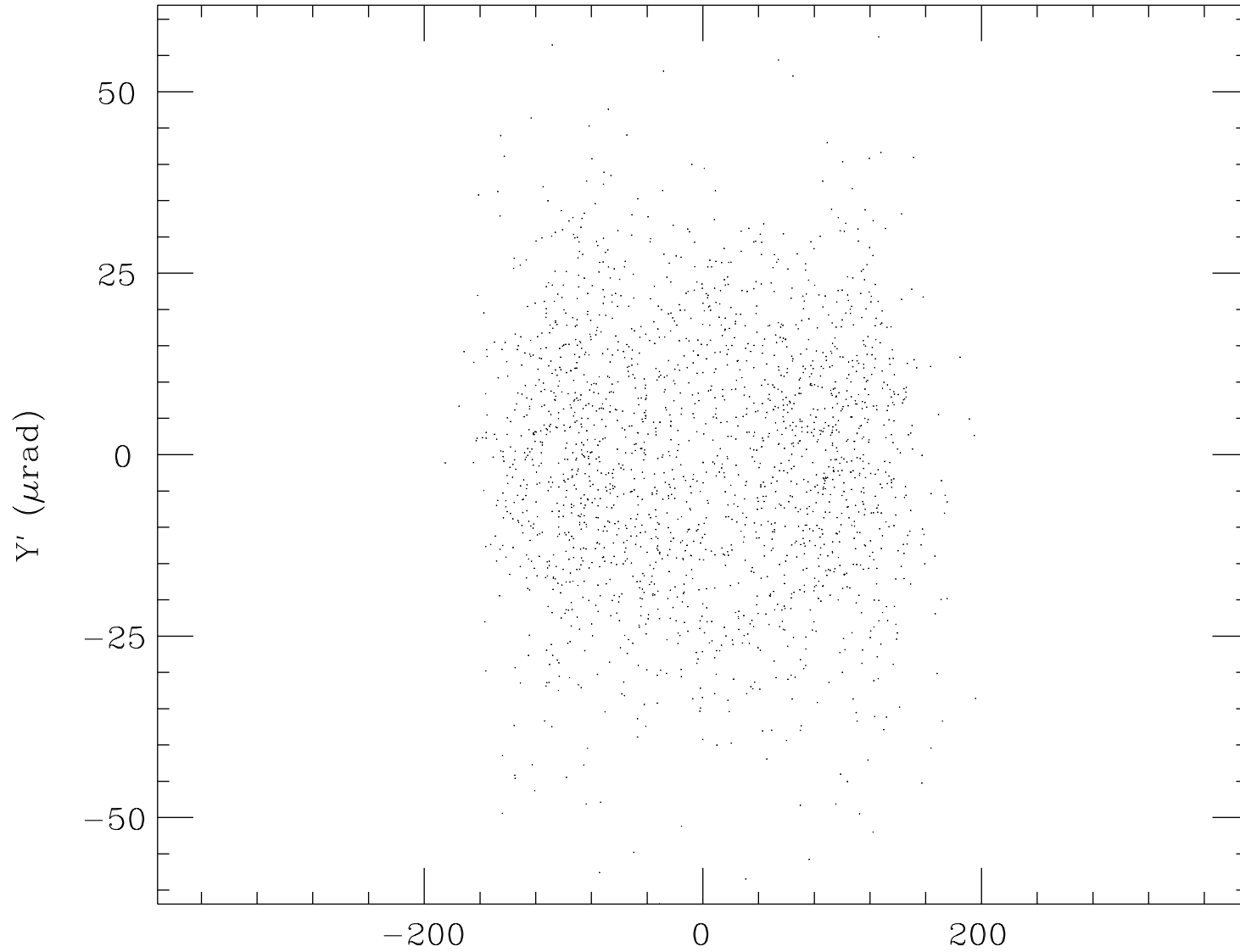
Beamstrahlung Energy Spectrum



Final Electron Energy Spectrum



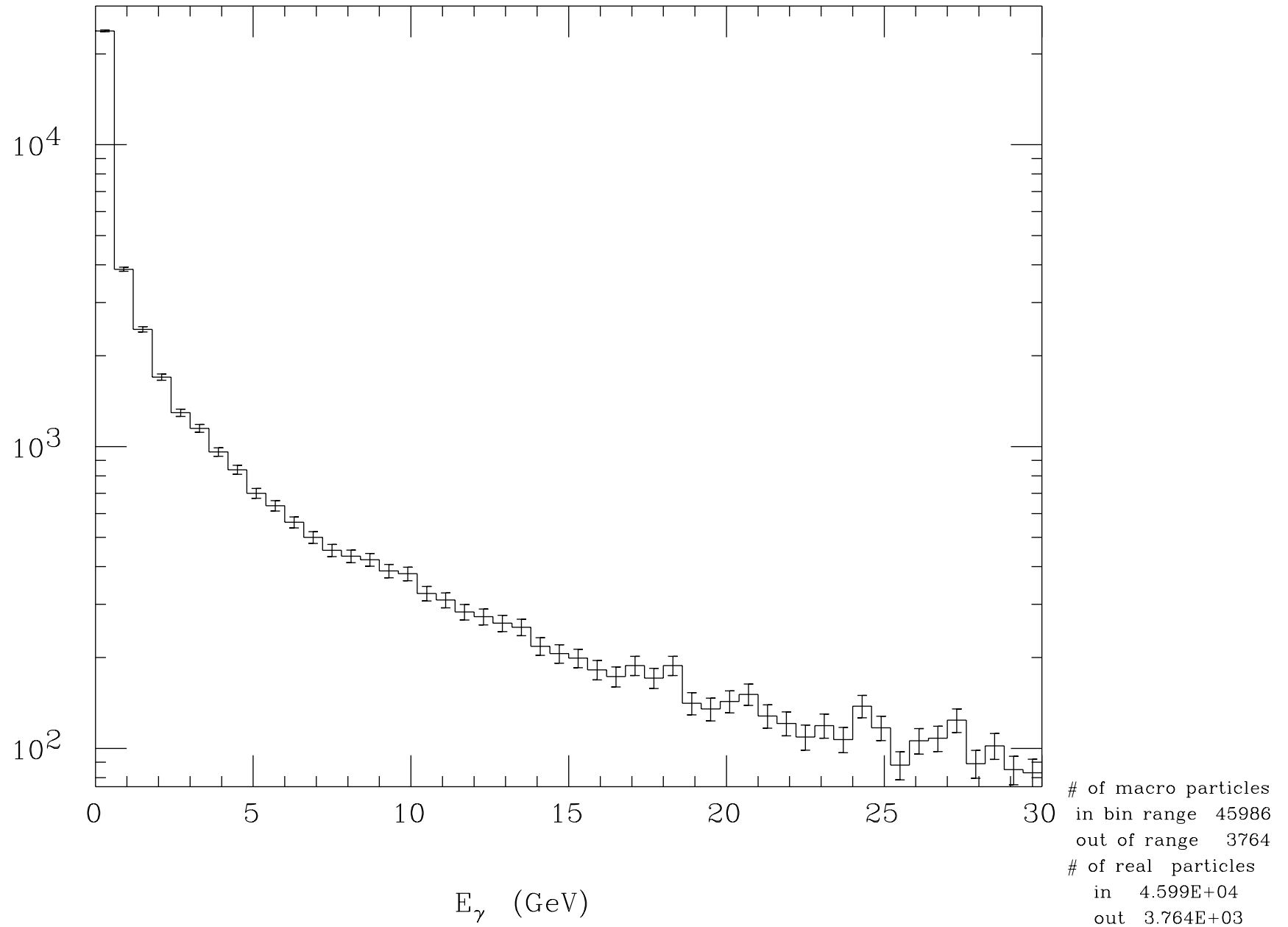
Final Electron Angle Distribution



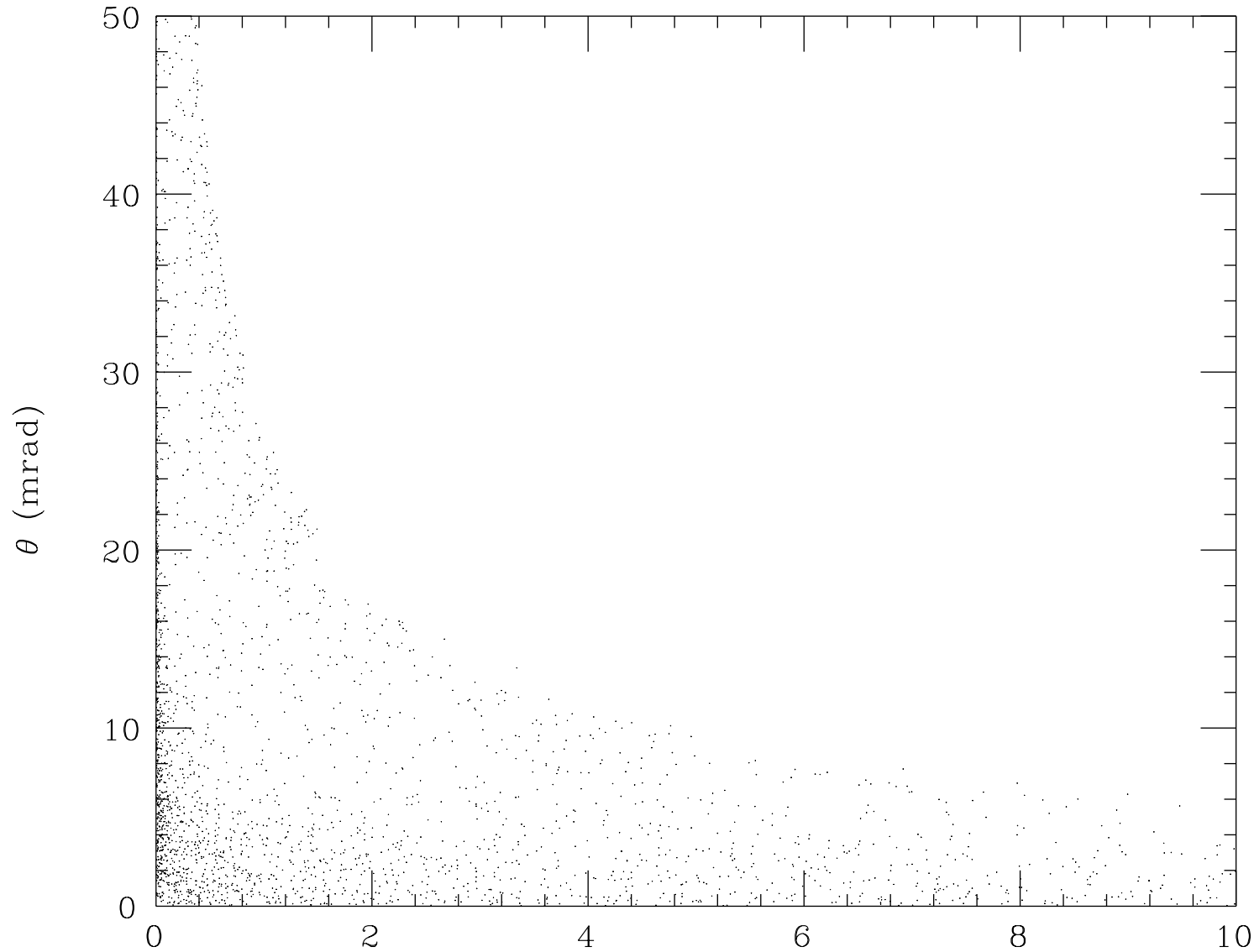
points inside	2002
points outside	11

$X' (\mu\text{rad})$

Incoherent Pair Energy Spectrum



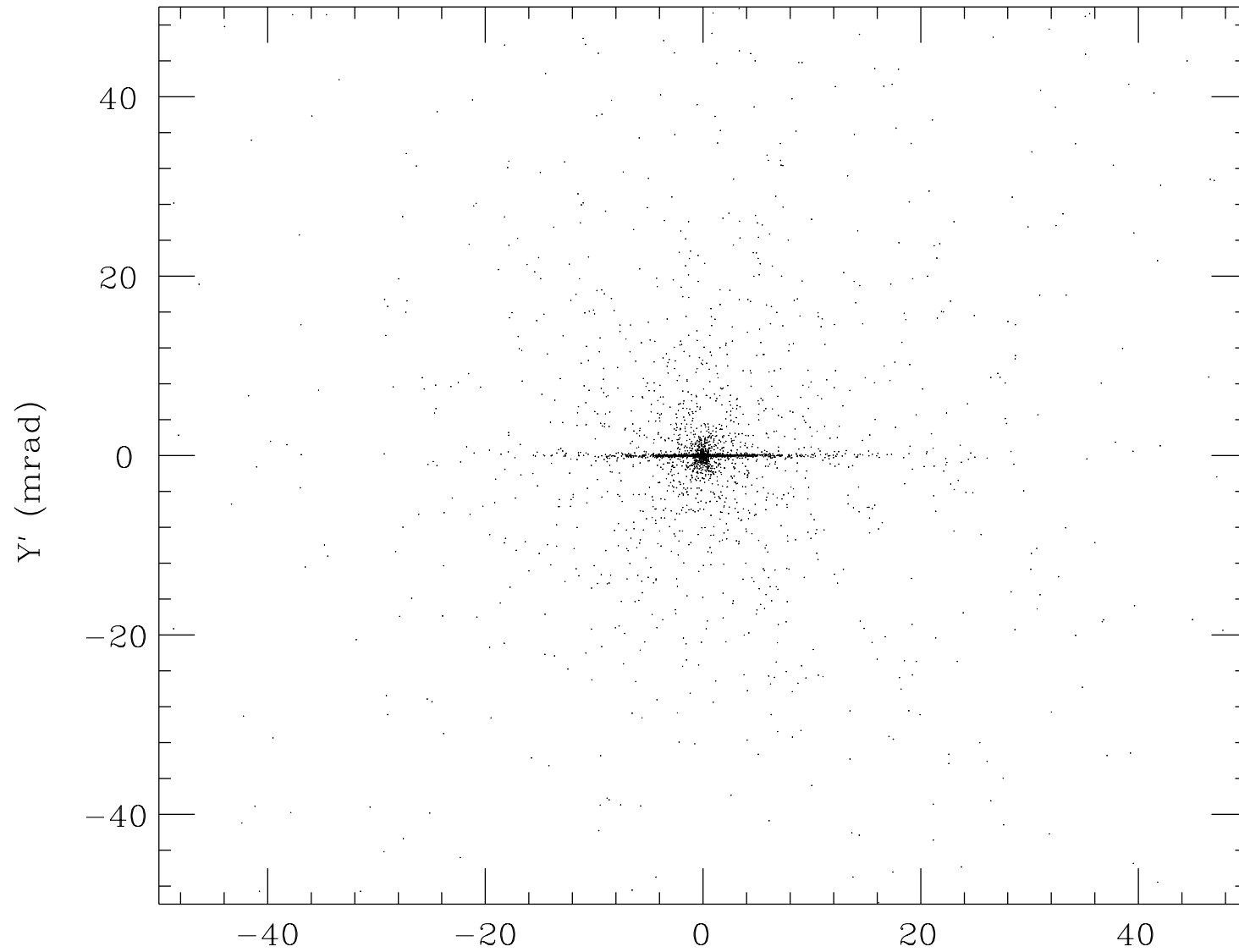
Incoherent Pair Energy-Angle Distribution



points inside	2465
points outside	1510

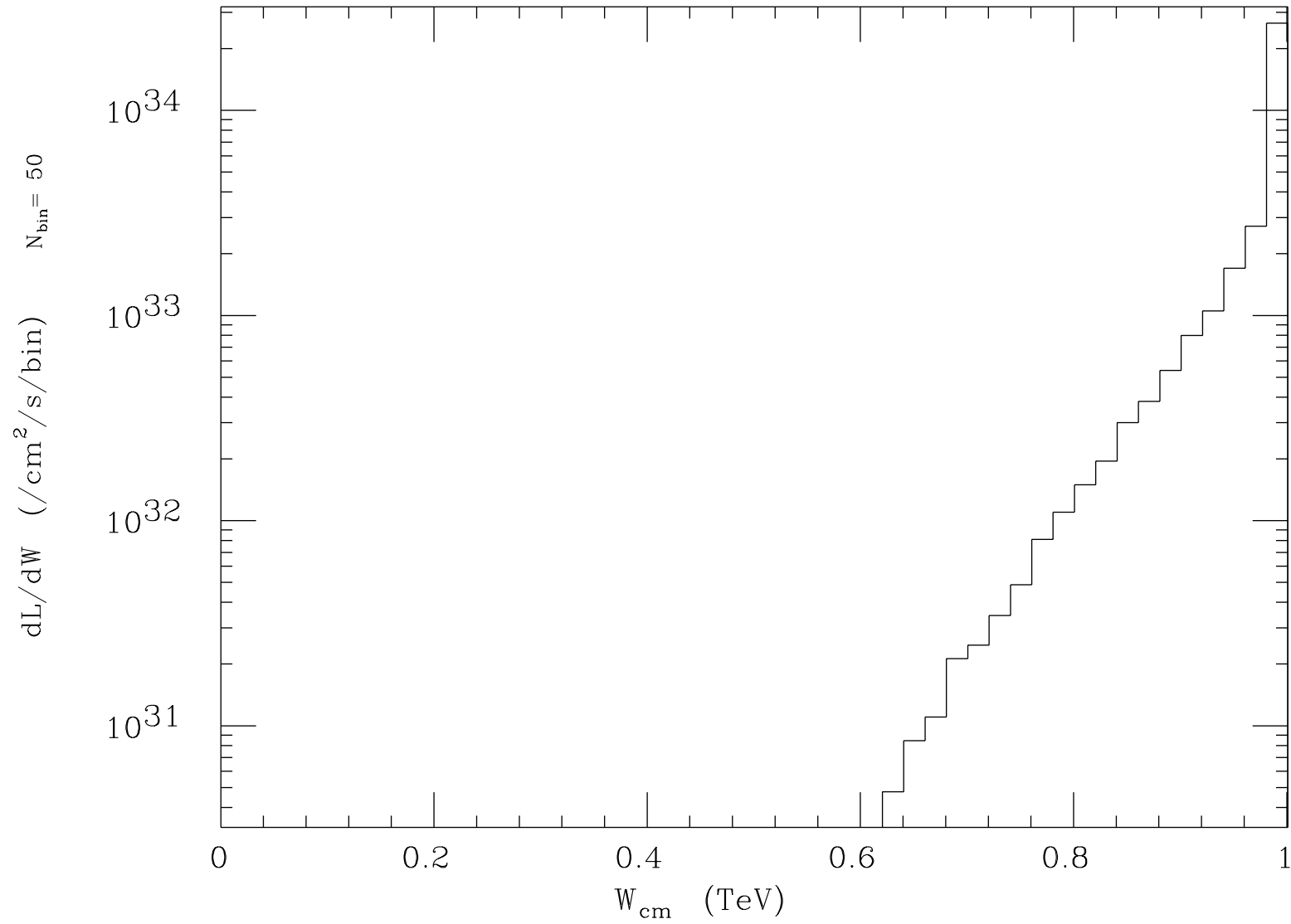
E (GeV)

Incoherent Pair Angle Distribution



points inside	3219
points outside	720

X' (mrad)

Luminosity Spectrum (e^-, e^+)

Total luminosity $3.479 \pm 0.006(\text{stat.}1\sigma)$ plotted range $3.479 \times 10^{34}/\text{cm}^2/\text{s}$