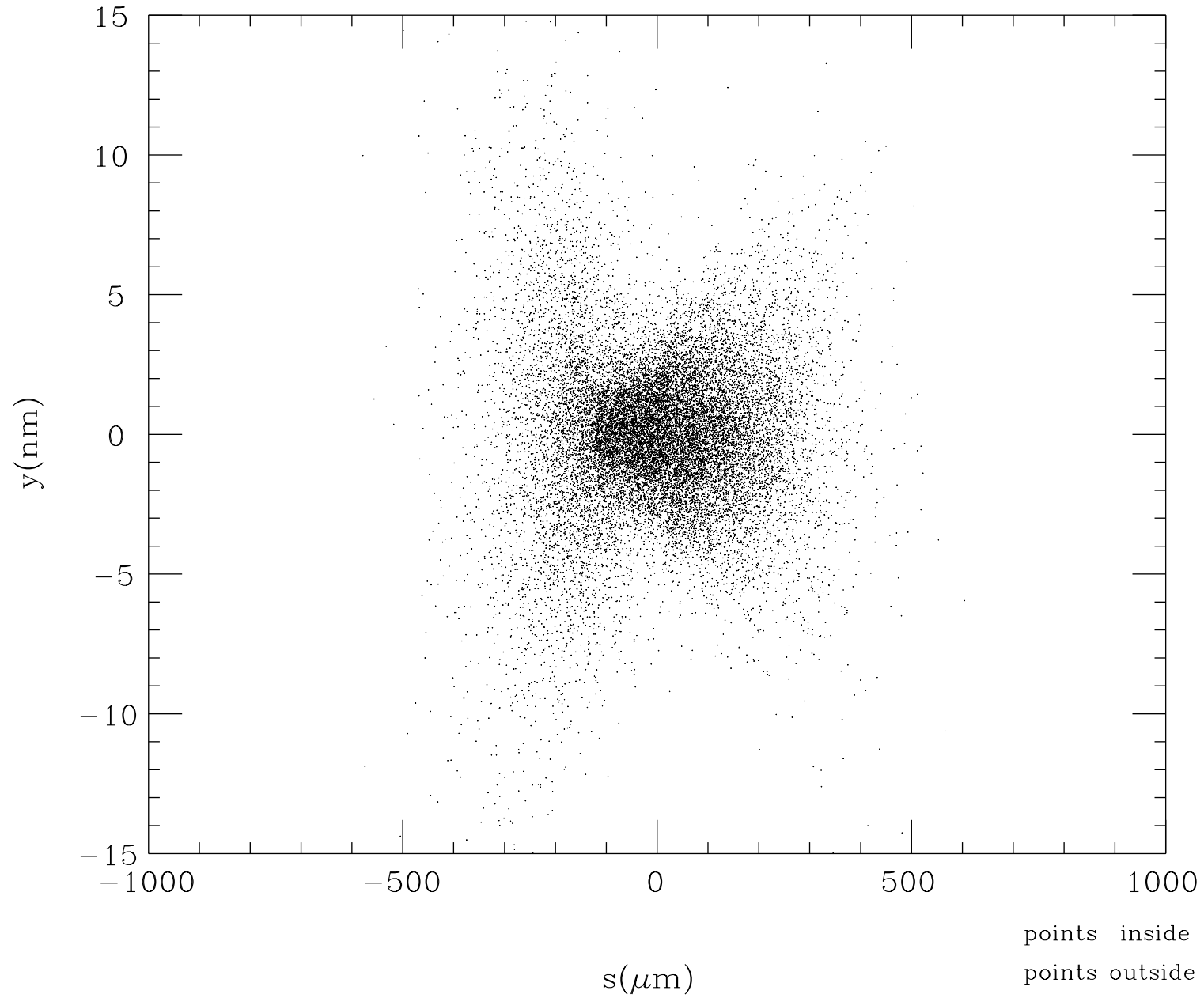
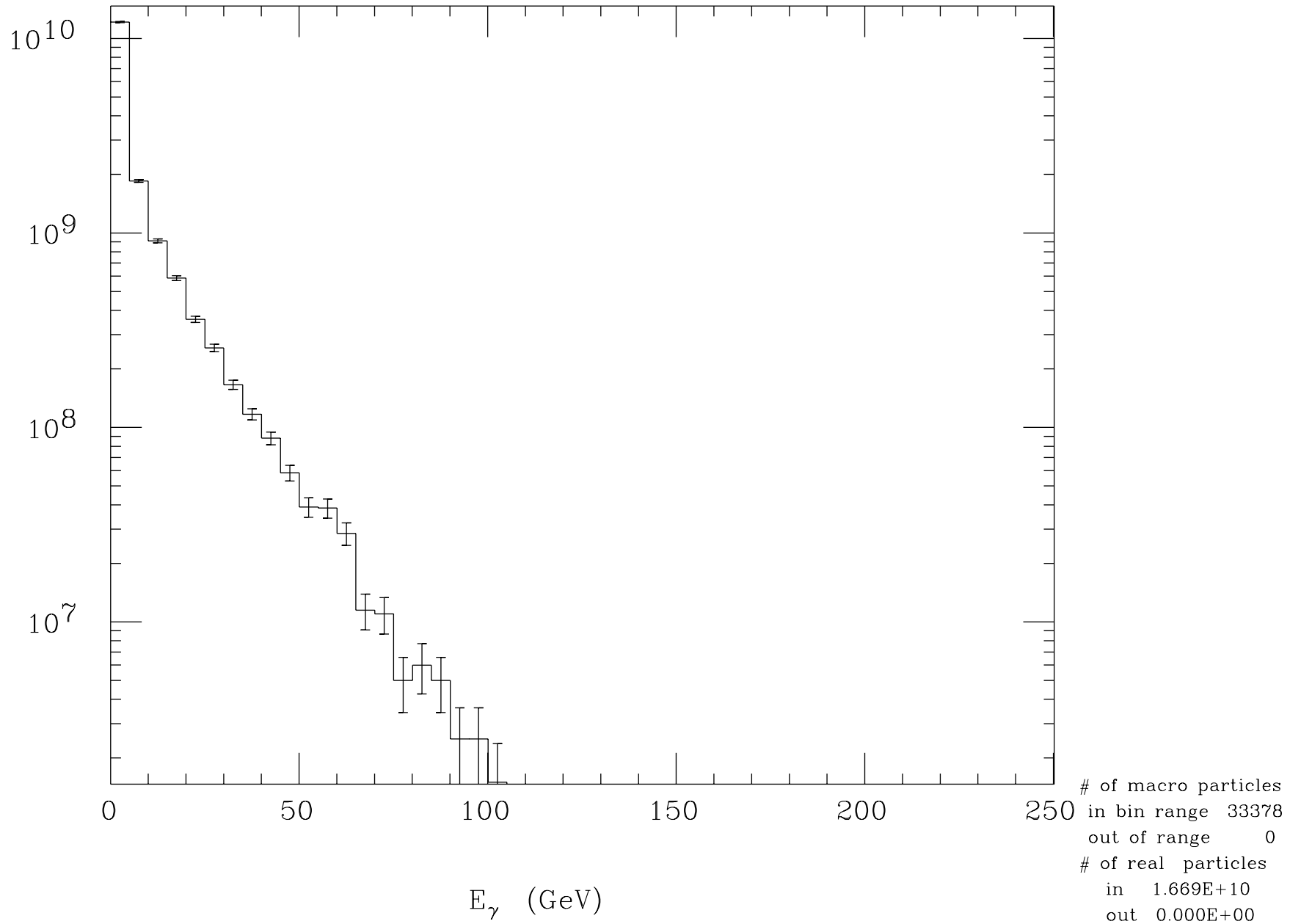


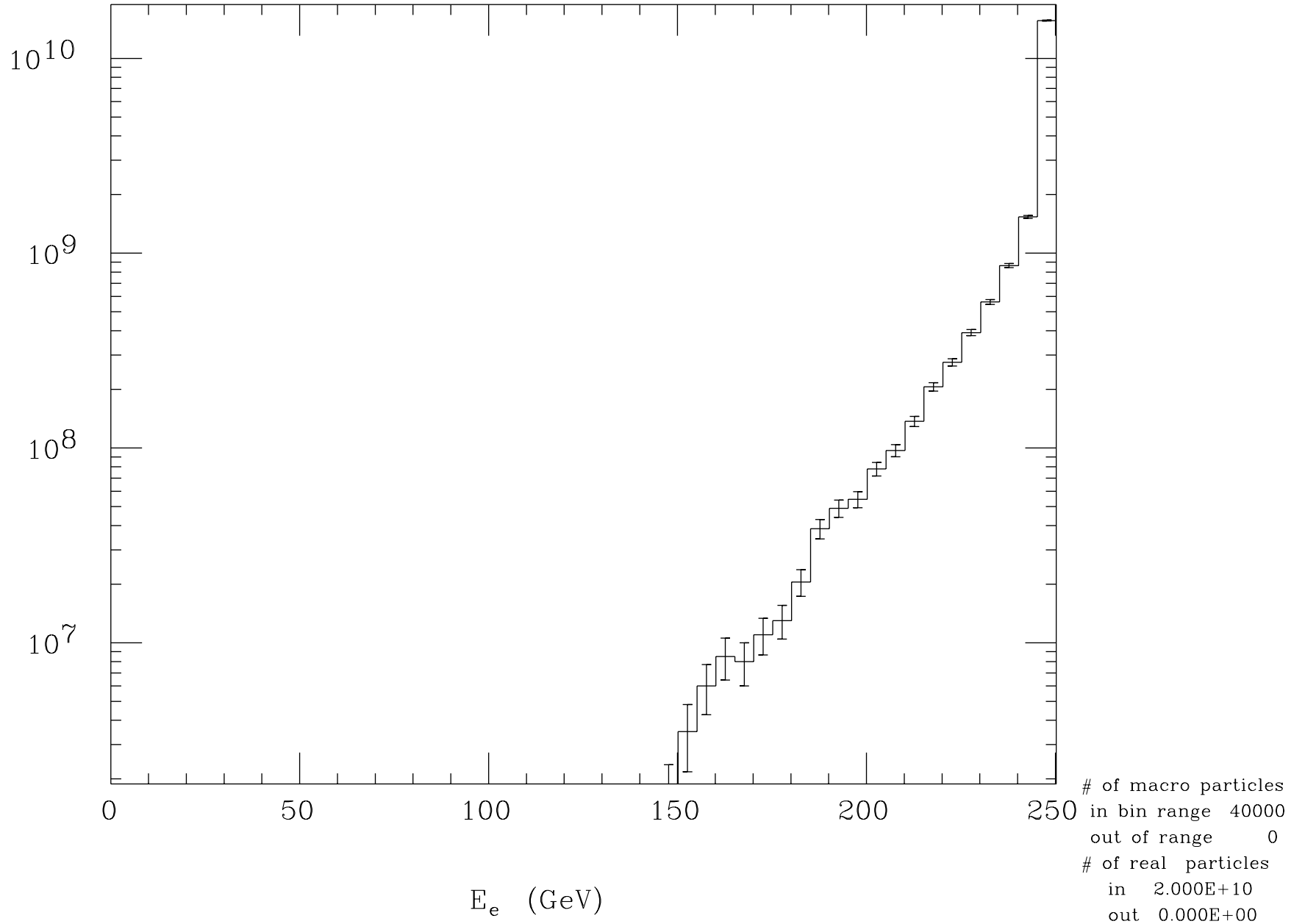
Electron Profile at t=0



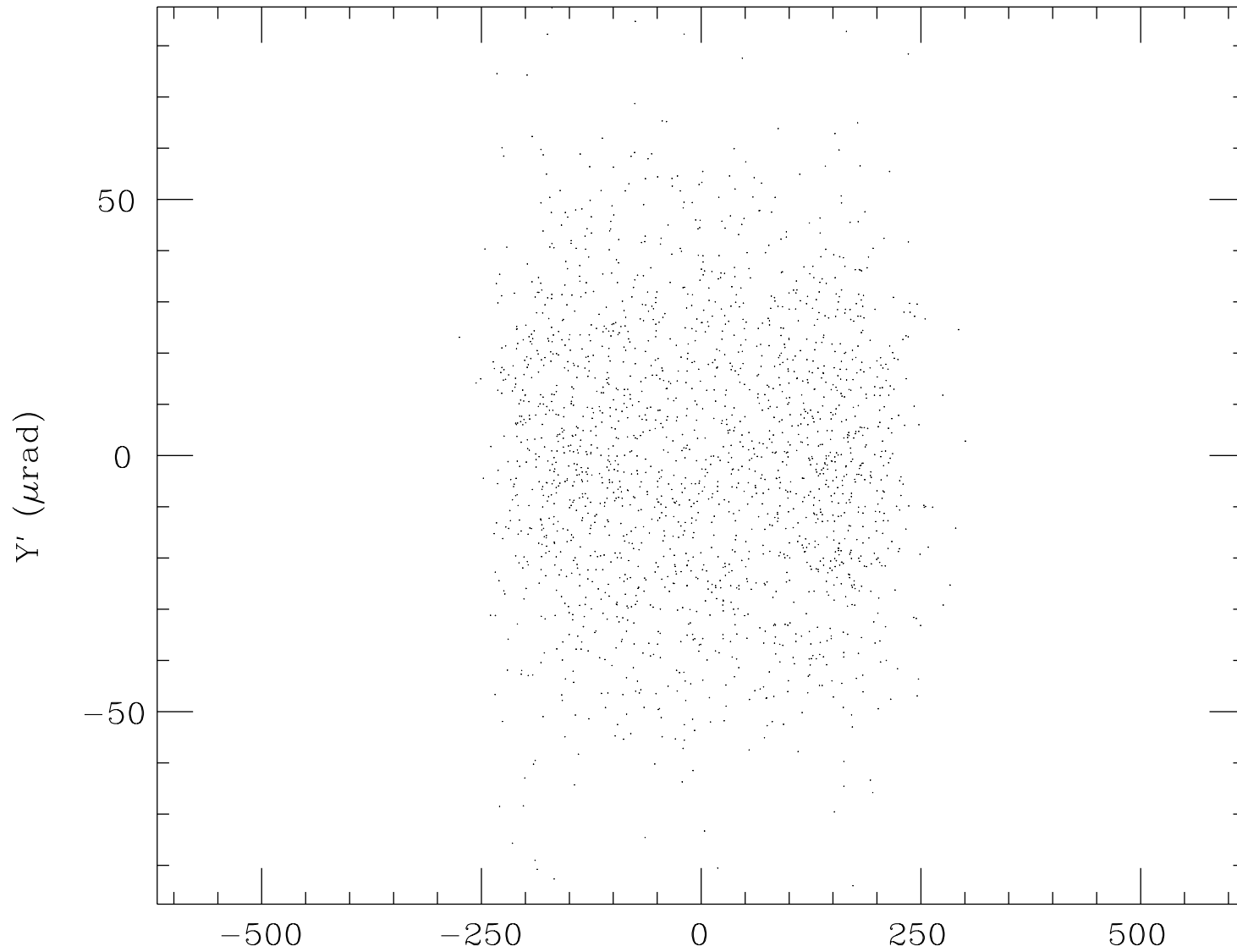
Beamstrahlung Energy Spectrum



Final Electron Energy Spectrum



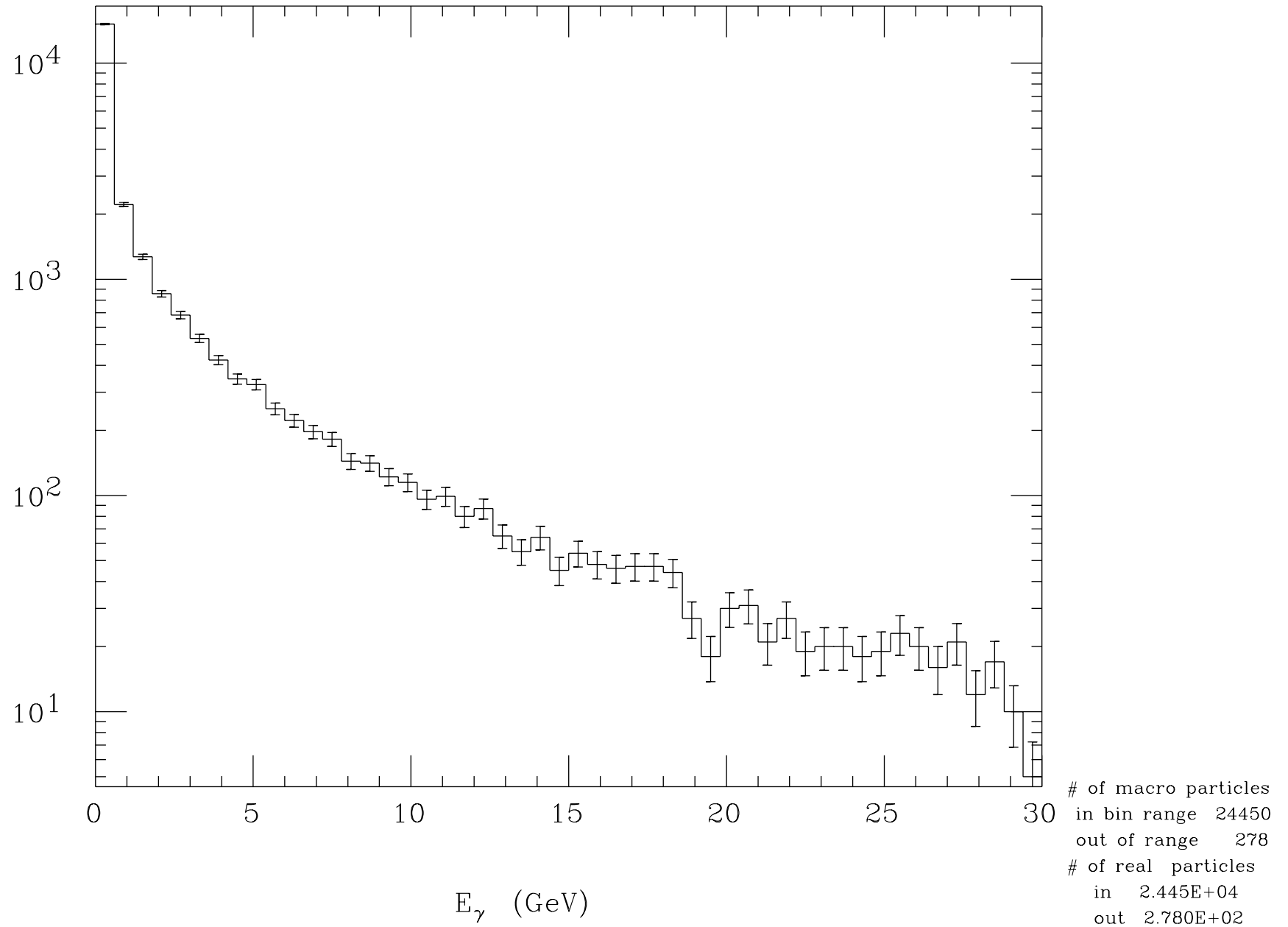
Final Electron Angle Distribution



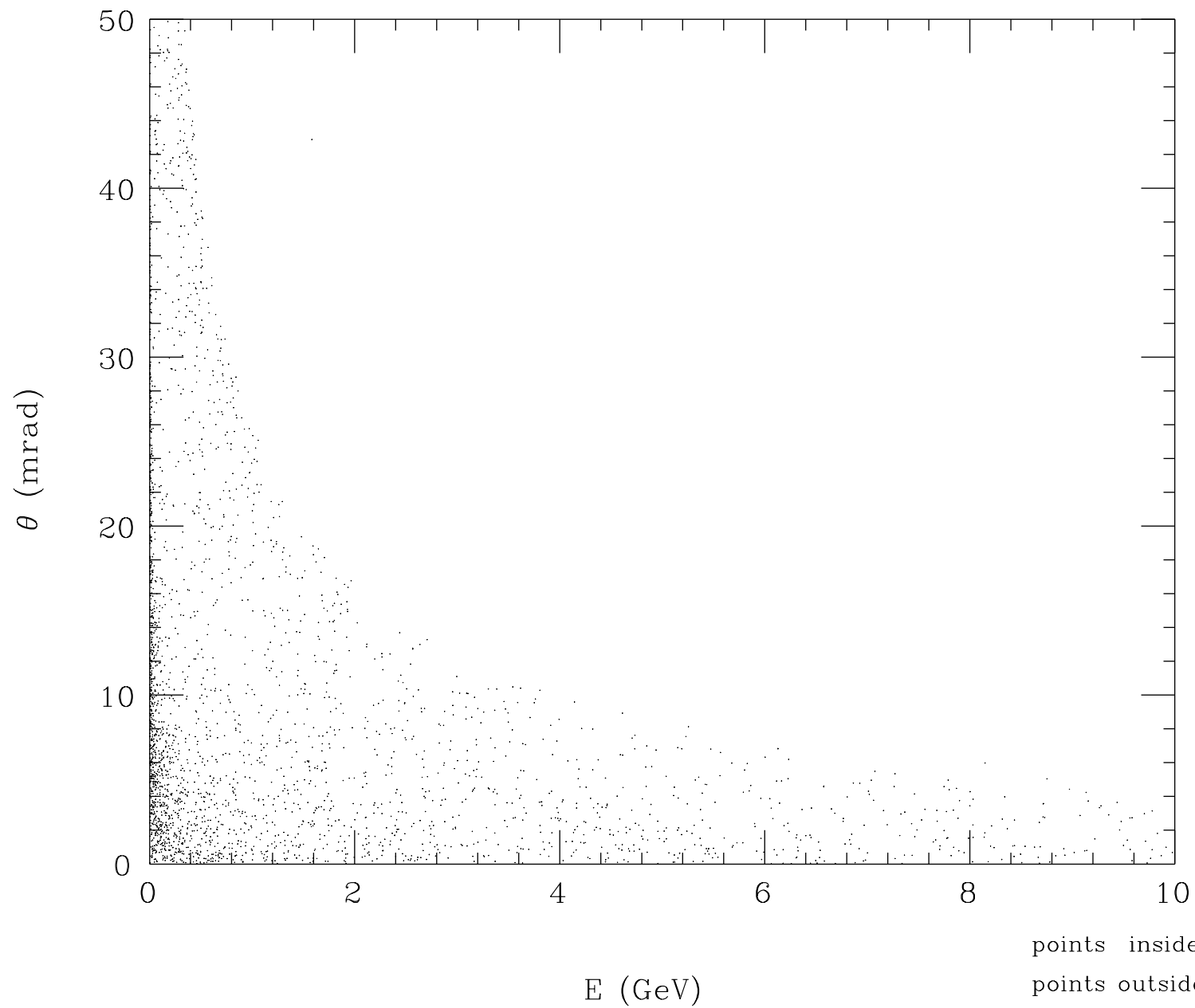
points inside	1945
points outside	4

$X' (\mu\text{rad})$

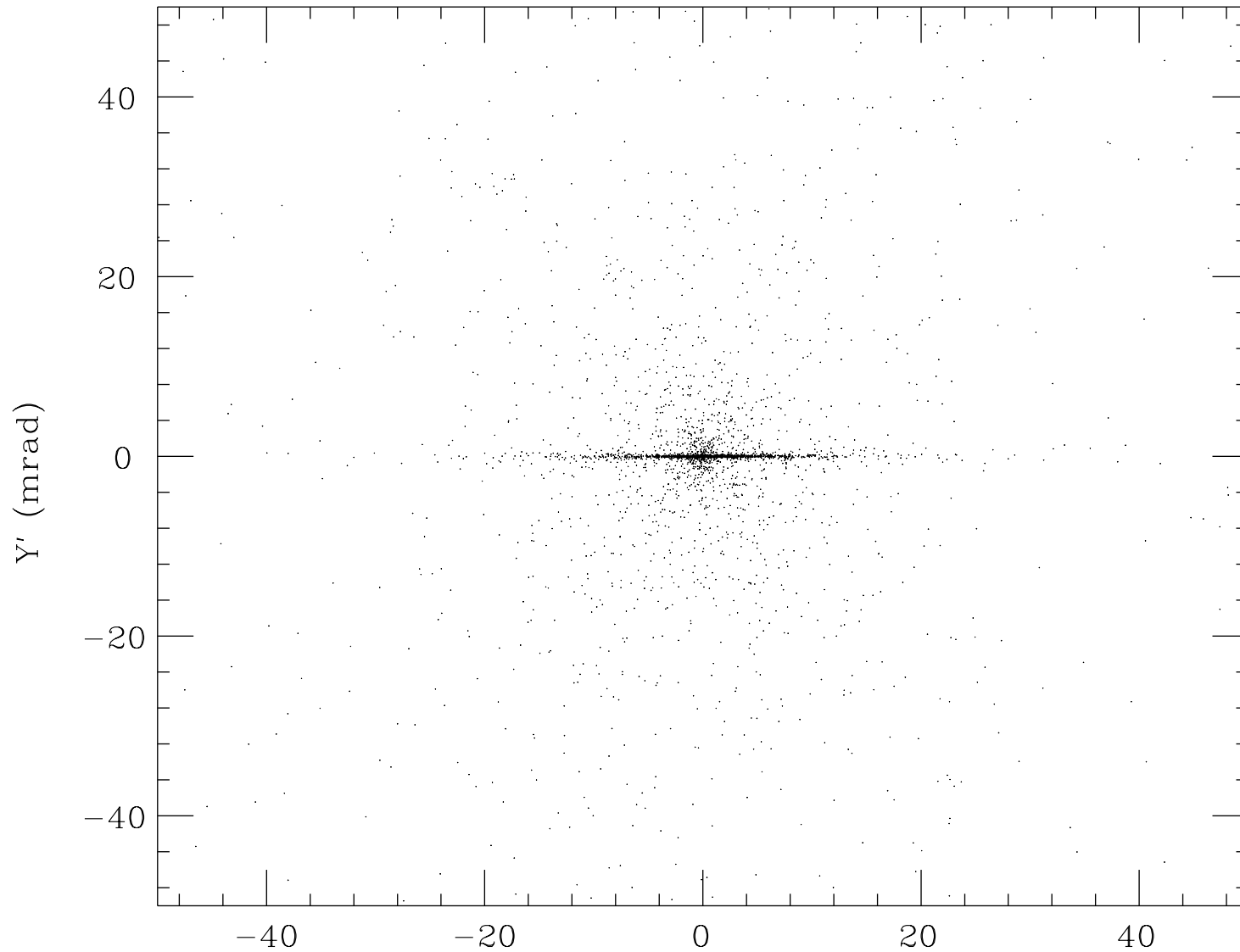
Incoherent Pair Energy Spectrum



Incoherent Pair Energy-Angle Distribution

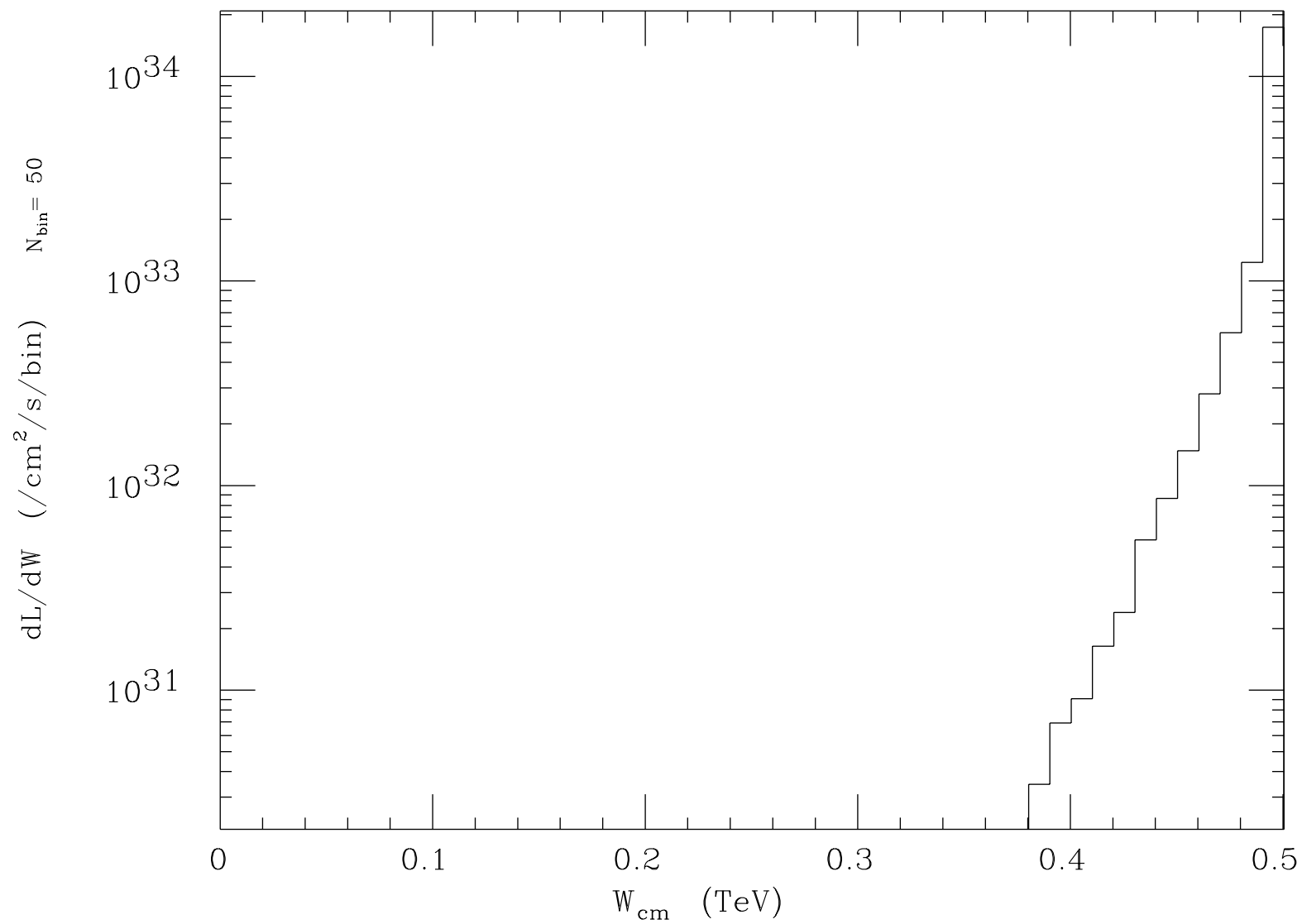


Incoherent Pair Angle Distribution



points inside	3032
points outside	886

X' (mrad)

Luminosity Spectrum (e^-, e^+)

Total luminosity $1.980 \pm 0.003(\text{stat.}1\sigma)$ plotted range $1.980 \times 10^{34}/\text{cm}^2/\text{s}$