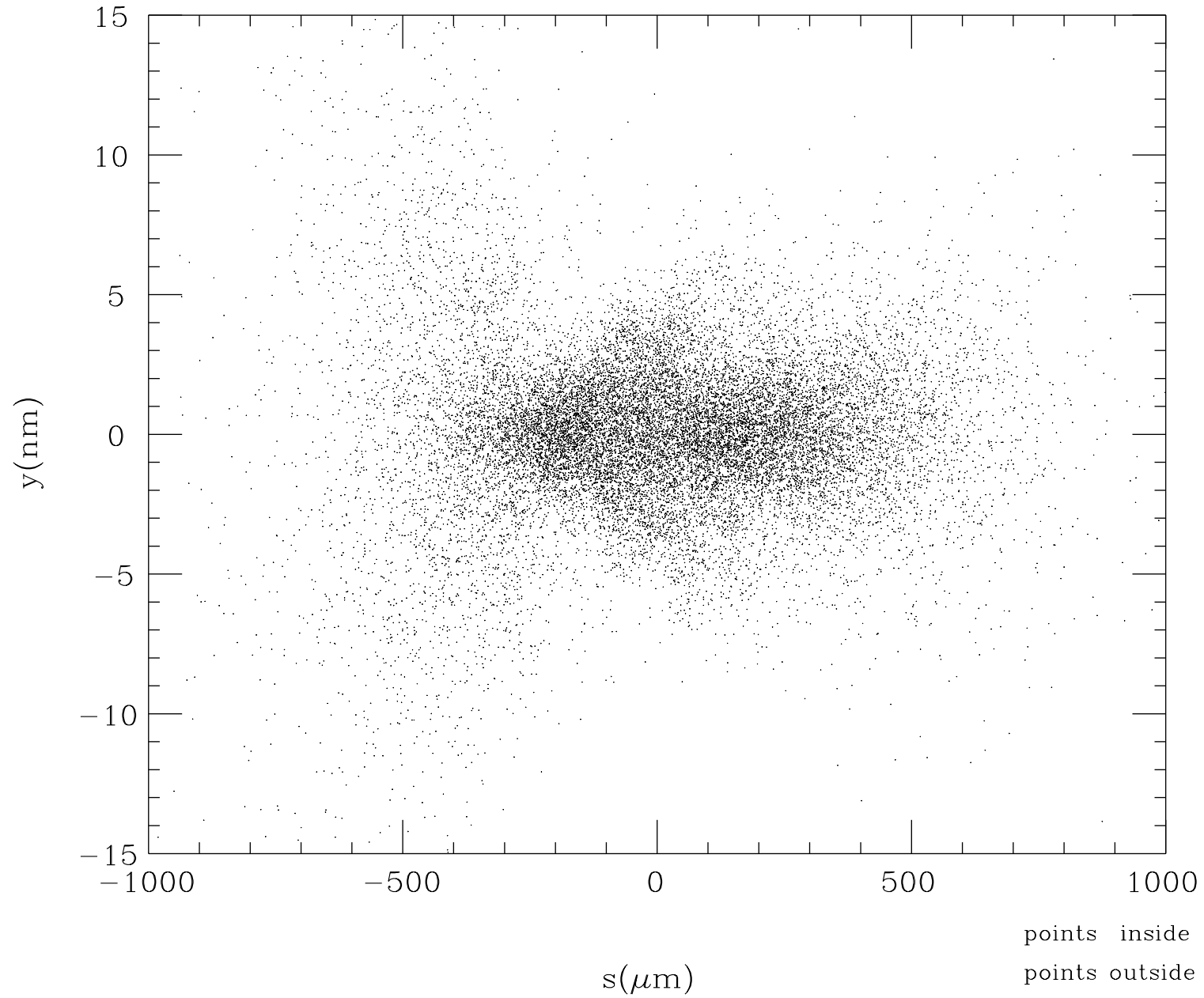
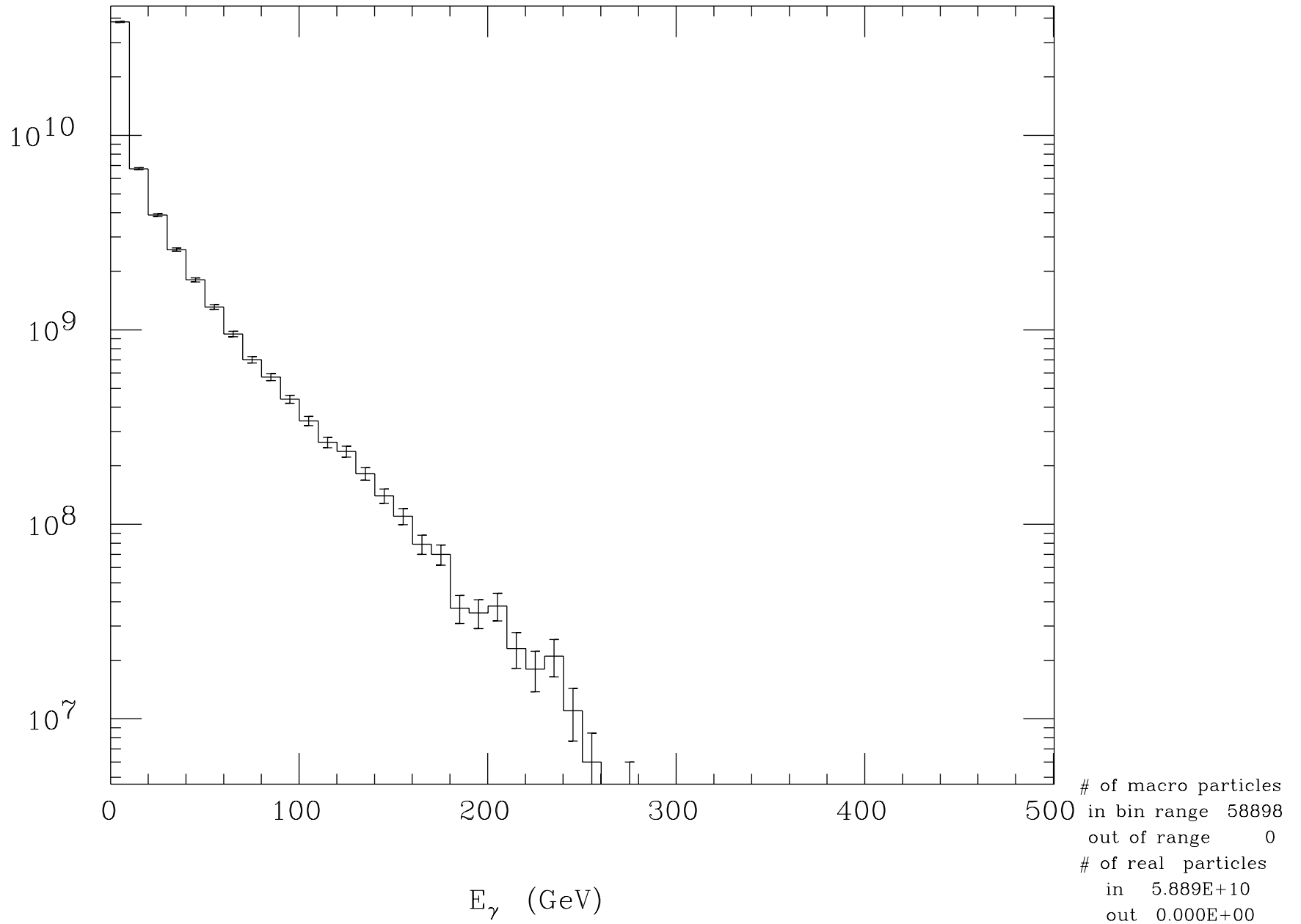


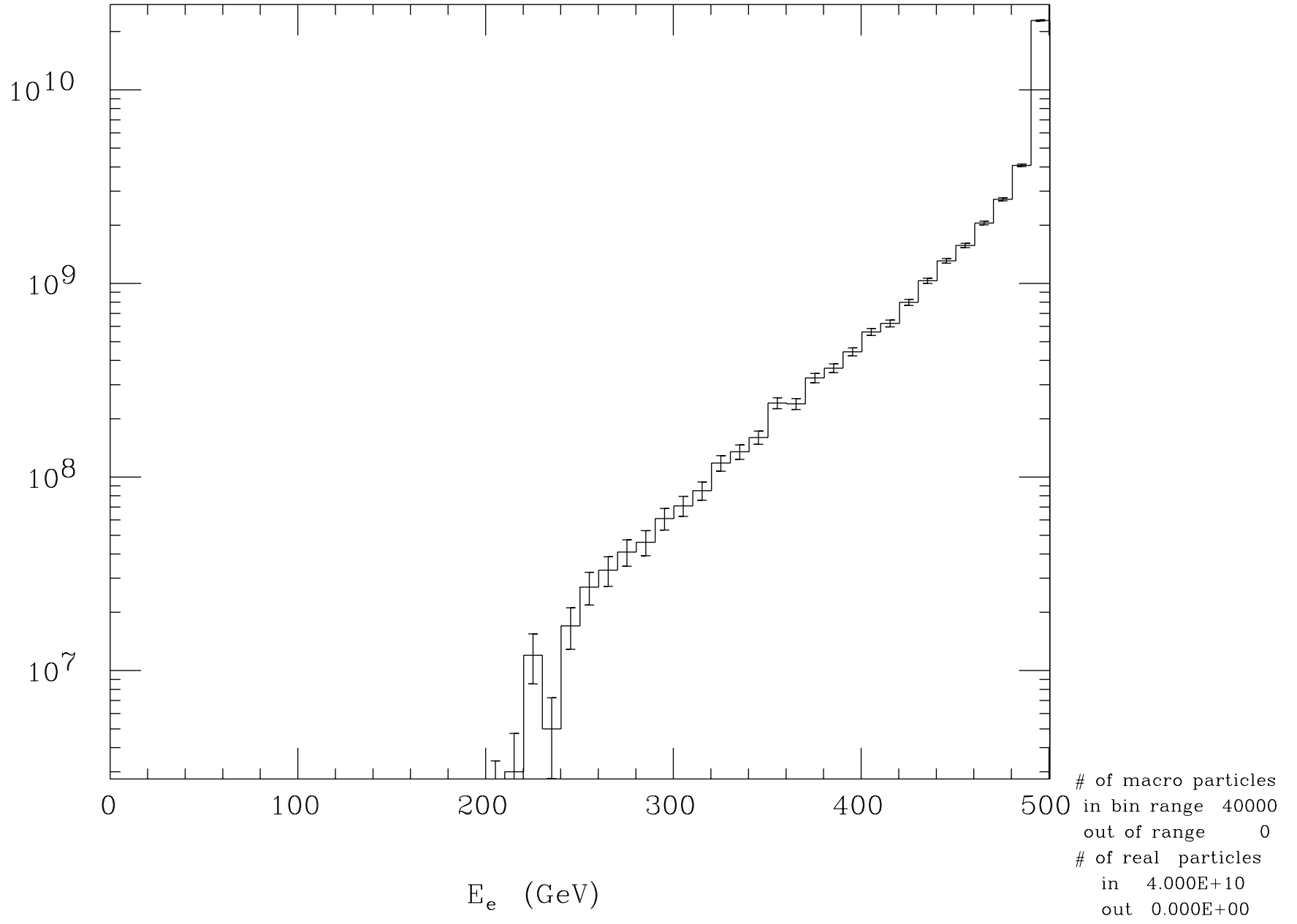
Electron Profile at t=0



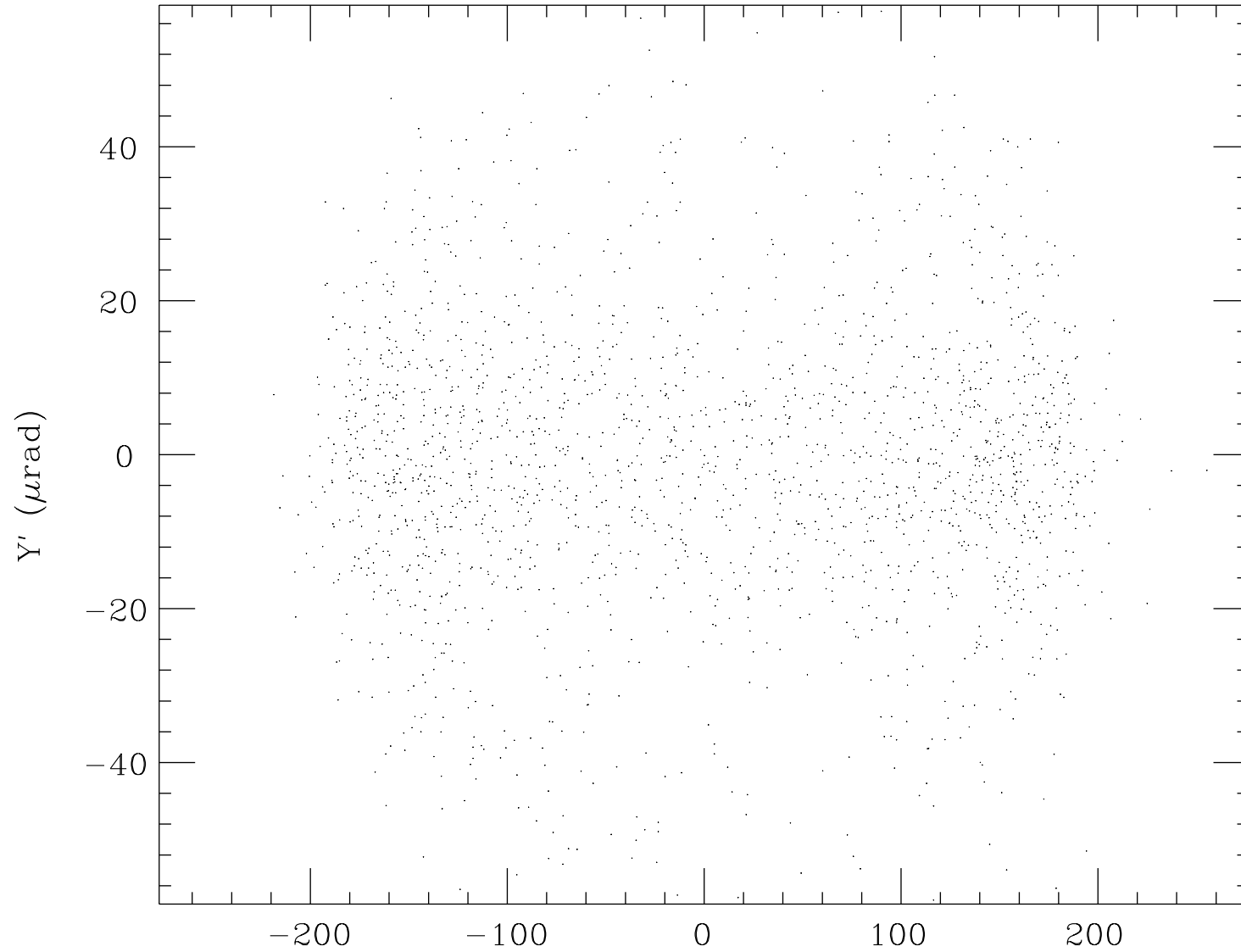
Beamstrahlung Energy Spectrum



Final Electron Energy Spectrum



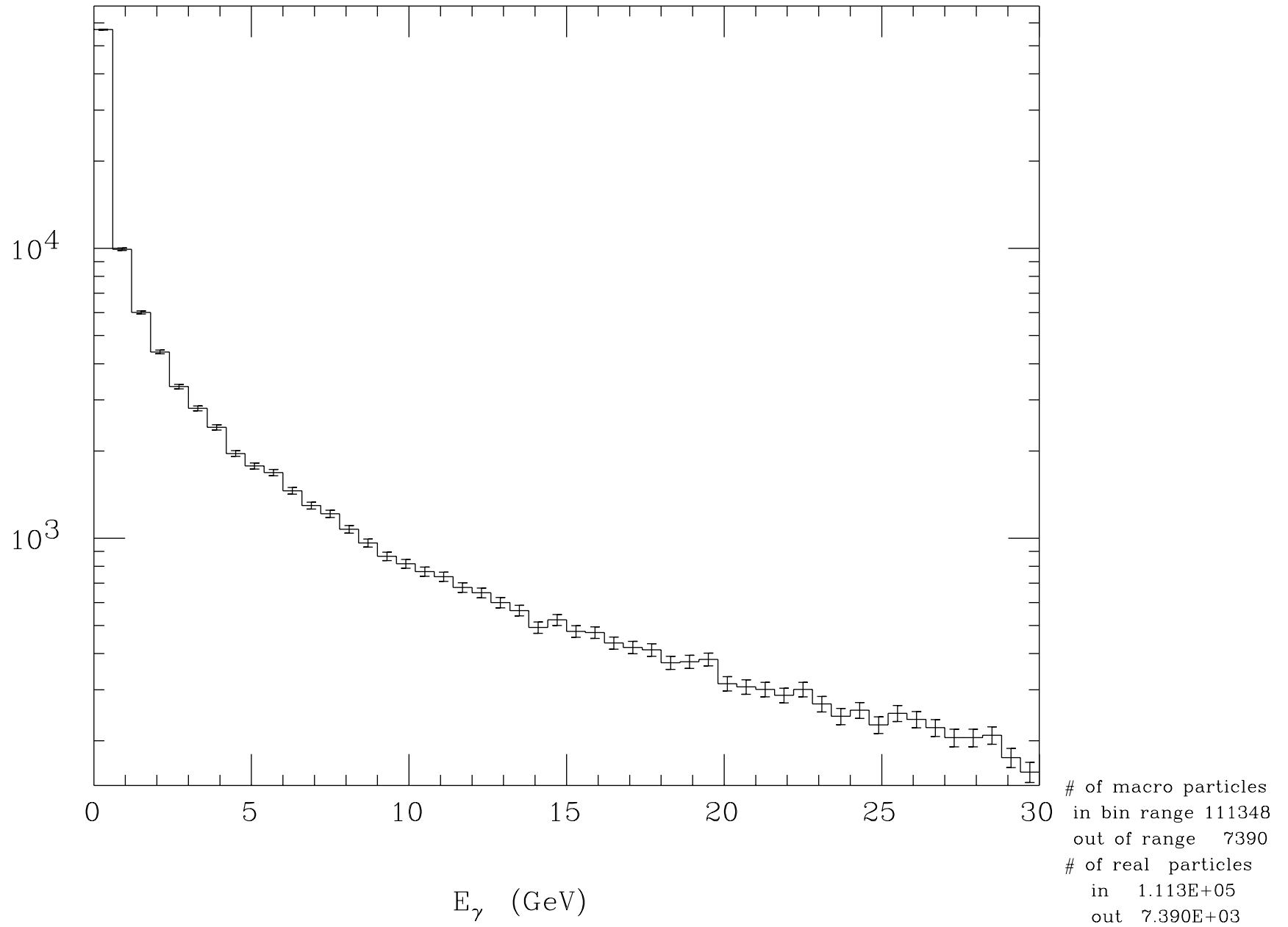
Final Electron Angle Distribution



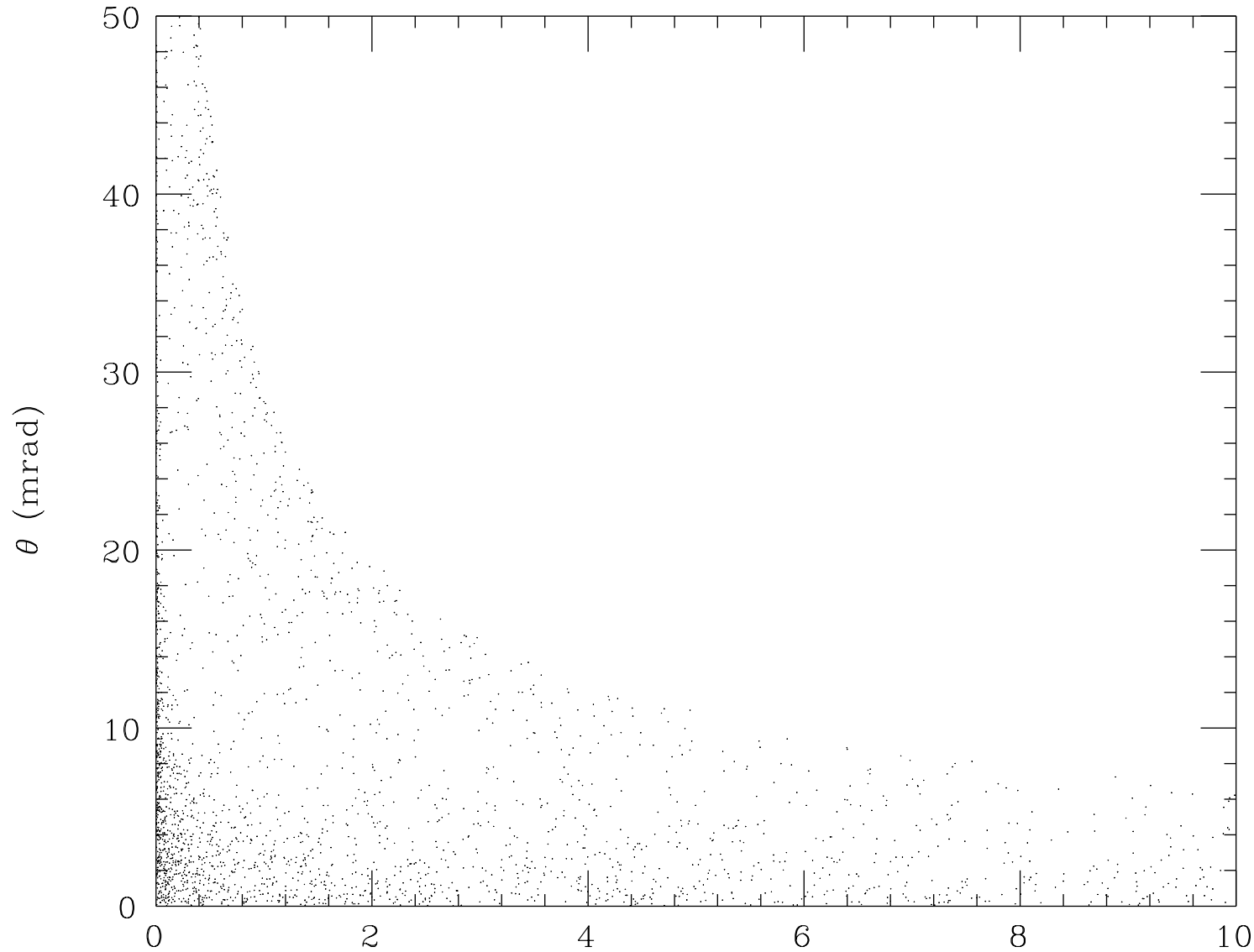
points inside	1980
points outside	7

$X' (\mu\text{rad})$

Incoherent Pair Energy Spectrum



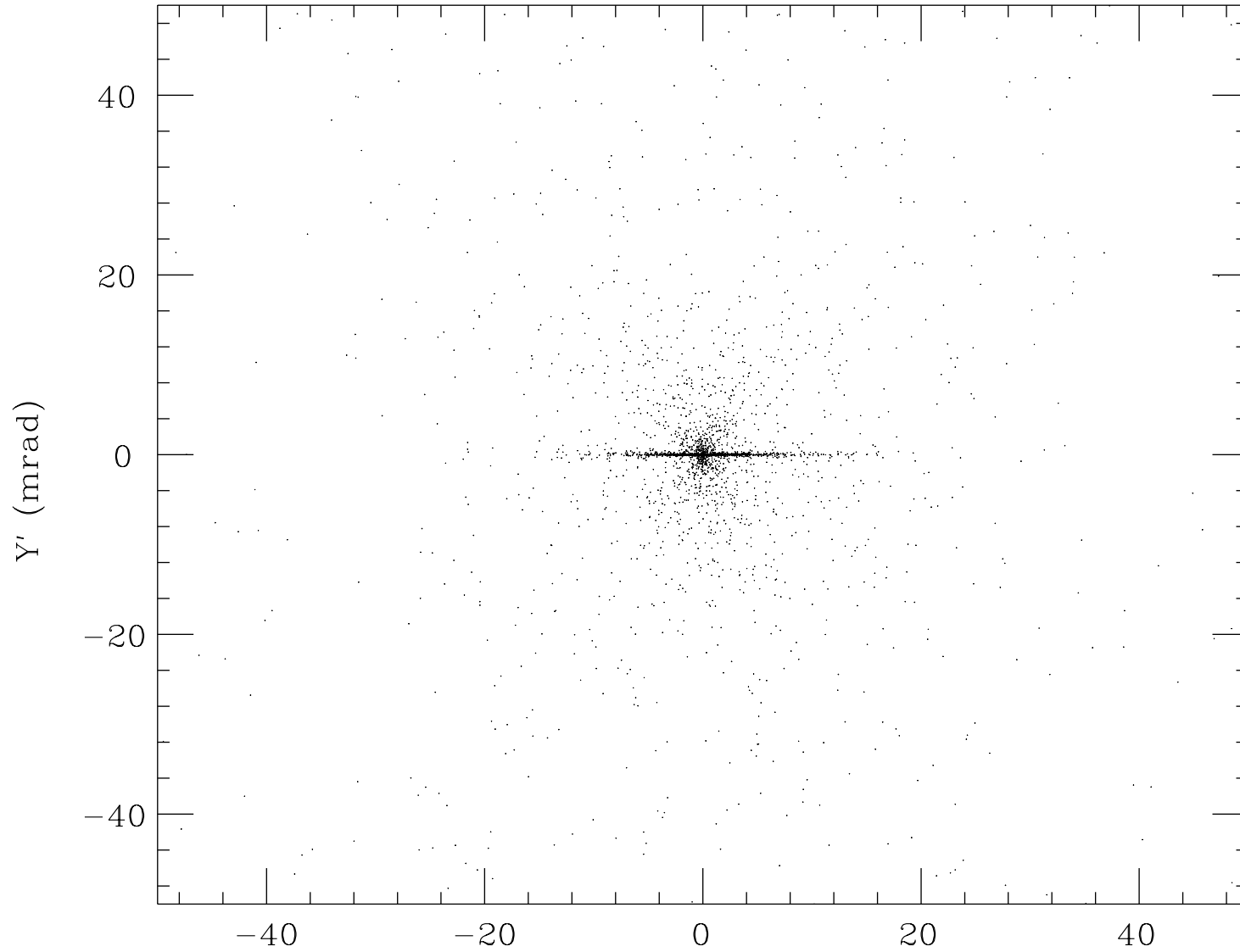
Incoherent Pair Energy-Angle Distribution



points inside	2503
points outside	1506

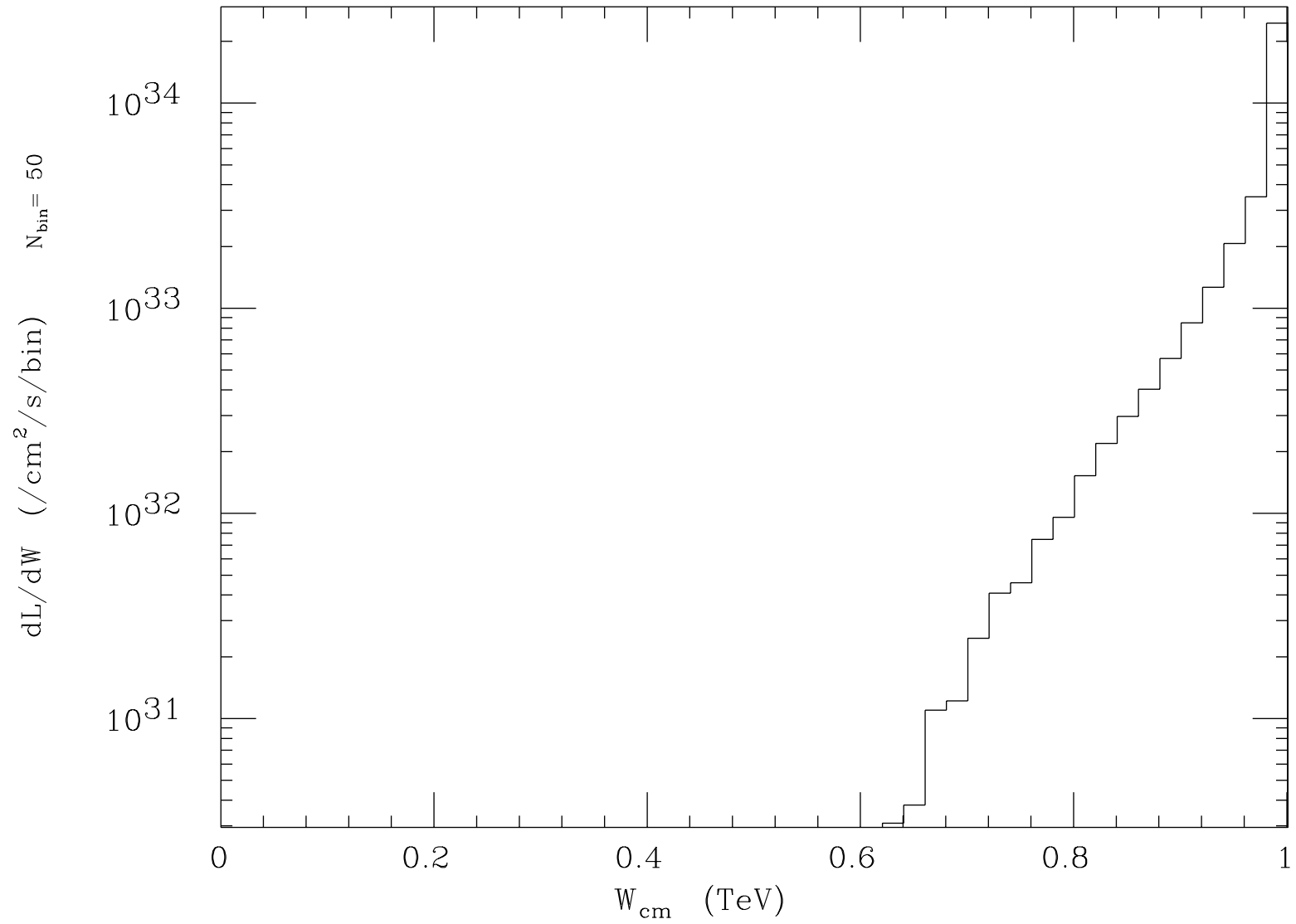
E (GeV)

Incoherent Pair Angle Distribution



points inside	3180
points outside	794

X' (mrad)

Luminosity Spectrum (e^-, e^+)

Total luminosity $3.416 \pm 0.006(\text{stat.}1\sigma)$ plotted range $3.416 \times 10^{34} \text{ cm}^2/\text{s}$